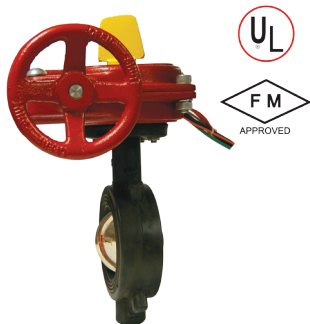


Monitored Wafer Butterfly Valves Fig DW

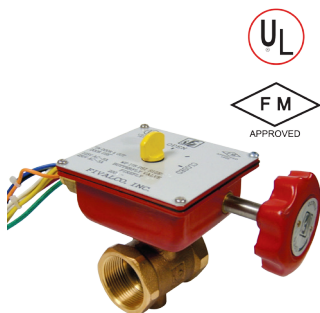


Design:	Gear operated monitored butterfly valve
End Connection:	Fits between ANSI 125 and Table E Flanges.
Body Materials:	Ductile iron body, A1 bronze disc, nickel chrome plated
Seats & Trim:	EPDM Encapsulated
Pressure:	175 PSI
Application:	Designed to initiate a signal at appropriate supervisory equipment to show whether a valve is open or closed. Suitable for fire protection and distribution systems

Face to Face Dim	Part No.	Size NB (mm)	Price \$
52	VFBFW-114-GEAR	100	657.54
56	VFBFW-165-GEAR	150	1137.55
60	VFBFW-219-GEAR	200	1616.02

Price Group: SD
VB03

Screwed BSP Bronze Monitored Butterfly Valves Fig BT

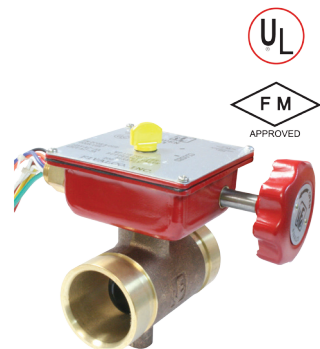


Design:	Gear operated monitored butterfly valve
End Connection:	Screwed BSP
Body Materials:	A1 bronze disc
Seats & Trim:	EPDM encapsulated
Pressure:	Max 175 PSI at 0°C to 120°C
Application:	Designed to initiate a signal at appropriate supervisory equipment to show whether a valve is open or closed. Fire protection and distribution systems.

Face to Face Dim	Part No.	Size NB (mm)	Price \$
54	VGBBB-34-GEAR	25	417.59
67	VGBBB-43-GEAR	32	433.09
73	VGBBB-48-GEAR	40	447.52
82.4	VGBBB-60-GEAR	50	561.71

Price Group: FE
VB03

Grooved Bronze Monitored Butterfly Valves Fig BG

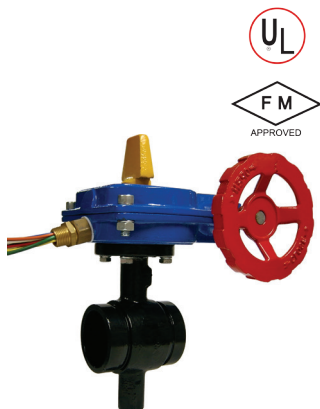


Design:	Gear operated monitored butterfly valve
End Connection:	Grooved
Body Materials:	A1 bronze disc
Seats & Trim:	EPDM encapsulated
Pressure:	Max 175 PSI at 0°C to 120°C
Application:	Designed to initiate a signal at appropriate supervisory equipment to show whether a valve is open or closed. Suitable for fire protection and distribution systems

Face to Face Dim	Part No.	Size NB (mm)	Price \$
114	VGBBF-60-GEAR	50	534.82

Price Group: FE
VF01

Grooved Mon Ductile Iron Butterfly Valves Fig HPG



Design:	Gear operated monitored butterfly valve
End Connection:	Grooved
Body Materials:	A1 bronze disc
Seats & Trim:	EPDM encapsulated
Pressure:	Max 300 PSI at 0°C to 120°C
Application:	Designed to initiate a signal at appropriate supervisory equipment to show whether a valve is open or closed. Suitable for fire protection and distribution systems

Face to Face Dim	Part No.	Size NB (mm)	Price \$
96.4	VGBFHP-76-GEAR	65	536.80
96.4	VGBFHP-88-GEAR	80	556.22
115.4	VGBFHP-114-GEAR	100	596.04
132.4	VGBFHP-165-GEAR	150	836.76
147.7	VGBFHP-200	200	1219.76

Price Group: FE
VF02

