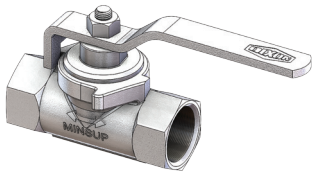
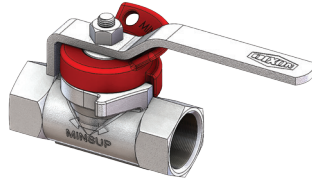


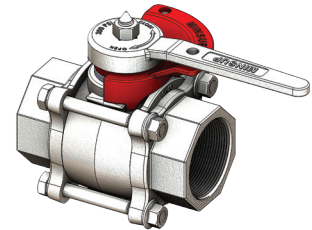
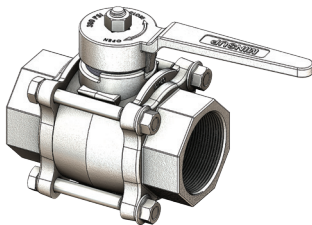
Econovalves™ - Ball Valves



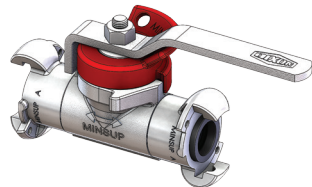
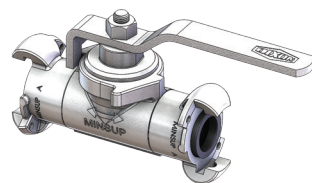
3/4" & 1" BSPF RANGE



1 1/2" & 2" BSPF RANGE



1 1/2" & 2" NPTF Standard



Design:	Solid construction with unique one piece ball and stem provides positive on/off action. In-line maintenance is easy for the top loading 3/4" and 1" range, and the 3 piece 1 1/2" and 2" range.
Body Materials:	Spheroidal graphite cast iron to ISO 1083; 400-250-15 SGI
Seats:	Nitrile Butadiene
Handle:	Spheroidal graphite cast iron to ISO 1083 (1 1/2" - 2") All other sizes have pressed mild steel handles
Ball & Stem:	Spheroidal graphite cast iron to ISO 1083; Chrome copper plated to AS1192
Seats & Trim:	Nitrile Butadiene
Bolts:	Hex, M10 x 1.5 x 90, Grade 8.8, black
Nuts:	Hex, M10 x 1.5, zinc plated, Grade 8
Temperature:	-20° to 80°C
Options:	Refer Econo Valve Lockout device 419
Application:	General purpose Ball Valve suitable for mining and industrial applications.
Working Pressure:	1/2 to 1" = 500 PSI WP 1 1/2 to 2" = 300 PSI WP

BSP Female x BSP Female				
Size (inch)	Part No.	Price \$	Part No.	Price \$
	Standard		Lockout	
1/2	---	---	08/062/03/000	97.95
3/4	---	---	08/062/114/00LO	66.20
1	08/062/113/00	56.24	08/062/113/00LO	60.77
1 1/2	---	---	08/062/847/00LO	201.40
2	08/062/848/00	149.88	08/062/848/00LO	158.27
NPTF x NPTF Standard				
1	08/062/102/00	65.66	08/062/102/00LO	57.51

Price Group: MS
AB01

'A' Type x 'A' Type				
Size (inch)	Part No.	Price \$	Part No.	Price \$
	Standard		Lockout	
1	08/062/110/00	69.39	08/062/110/00LO	74.15

Price Group: MS
AB01

M

