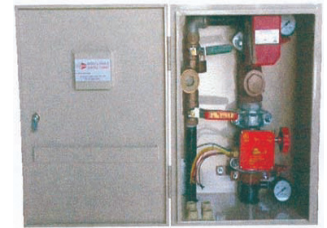


Residential Sprinkler Control Cabinet 50MM

Components	
Main Stop Valve:	Bronze Monitored DN50 (Fivalco UL-FM approved)
Check Valve:	DN50 Soft Seat check valve - epoxy coated ductile iron
Test and Drain Valve:	Lockable - complete with 003 padlock
Flow Switch:	Potter Model UL FM approved
Pipe Work:	Galvanised roll grooved pipe to AS4118 2.1
Testing:	Pressure tested to 2100 kPa



Part No.	Price \$
FFS-RSCC	3691.53

Price Group: SD
FP03

Cabinet: Security Lockable cabinet door is fitted with a 003 Fire Industry common key and break glass key holder. Service book holder incorporated in door. Provision for six spare sprinkler heads with cabinet.

Installation Instructions:

- The incoming and outgoing pipe connections are DN50 (60.3mm OD) roll grooved mechanical couplings. Various adaptors are available to connect to different pipe sizes and pipe types.
- The cabinet can be fitted between the wall studs or surface mounted.
- The authority having jurisdiction may require the cabinet to be located in a highly visible position.
- Water pressure and flow rates should be confirmed as adequate.
- The test and drain line must be piped to waste. Electrical connections to be installed and tested by authorised personnel.

Dismantling and Servicing Instructions: Each section can be dismantled by authorised service personnel should any servicing be required.

Components requiring service can be removed and replaced or serviced on site.

- Advise the local authority that the system is being shut down for servicing .
- Dismantling of electrical connections should be performed by qualified personnel.
- Shut down water supply from main supply.
- Shut down monitored valve from cabinet. Dismantle the roll groove coupling or the mechanical tee to test and drain. The couplings can be re-used take care when removing.
- Drain down water from system at test and drain valve.

Alternative: Complete cabinet can be removed.

All components are available and can be supplied ex-stock.