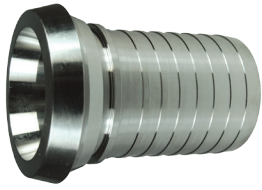


Holedall™ DIN External Crimp Stem

Standards:	DIN 11851 / 11887, Couplings & Gaskets		
Material:	316 Stainless Steel		
Size	Part No.	Price \$	
DN25	HA0239	107.26	
DN40	HA0240	115.11	
DN50	HA0241	166.49	
DN65	HA0242	312.47	
DN80	HA0243	293.69	
DN100	HA0298	430.49	
DN25	HA0234	115.11	
DN40	HA0235	128.94	
DN50	HA0236	220.47	
DN65	HA0237	268.18	
DN80	HA0238	325.94	
DN100	HA0297	416.56	

Note: All stems are manufactured to suit inch bore hoses (not metric hose bores).

Price Group: DS
AV07

Wine Female Crimp Stem

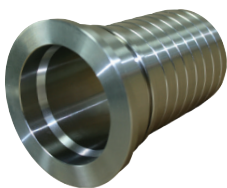
Size (inch)	316 Stainless Steel	
	Part No.	Price \$
2	HA0850	159.84
3	HA0851	289.77
4	HA0852	382.91

Price Group: DS
AV07

Buttweld Tube Crimp Stem

Material:	316 Stainless Steel		
Size (inch)	Part No.	Price \$	
1	HA0833	96.36	
1½	HA0835	126.01	
2	HA0837	168.10	
2½	HA0839	268.04	
3	HA0841	331.04	
4	HA0843	410.60	

Price Group: DS
AV07

BSM CIP Crimp Stem

Material:	316 Stainless Steel		
Size (inch)	Part No.	Price \$	
1	HA0224-CIP	78.37	
1½	HA0225-CIP	115.37	
2	HA0226-CIP	148.76	
2½	HA0227-CIP	224.48	
3	HA0228-CIP	216.51	
4	HA0294-CIP	402.12	

Price Group: DS
AV07

NZ RJT Crimp Stem

Material:	316 Stainless Steel		
Size (inch)	Part No.	Price \$	
1½	HA0225-NZ	115.37	
2	HA0226-NZ	148.76	
2½	HA0227-NZ	224.48	
3	HA0228-NZ	216.37	
4	HA0294-NZ	402.12	

Price Group: DS
AV07