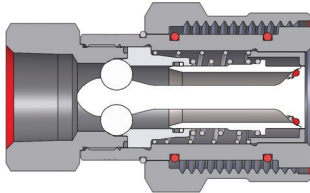
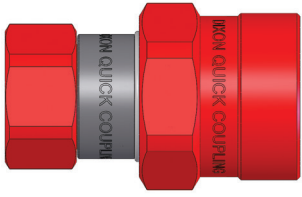


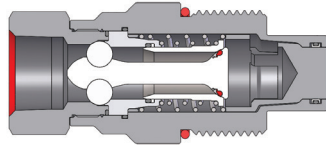
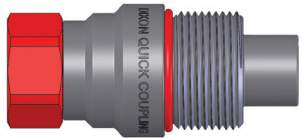
VEP-BOP Series Hydraulic Couplers



VEP-BOP Series Blowout Prevention Safety Coupler (Female Threads)												
Size (inch)	Part Detail			Length		Maximum OD		Hex mm	Weight Kgs	Package Qty		Price \$ (ea)
	Part No.	Threads	Material	Inch	mm	Inch	mm			Bag	Box	
3/8	3VEPF3-BOP	3/8" - 18 NPTF	Steel	2.55	64.8	1.62	41.1	25	0.28	-	20	155.20
1/2	4VEPF4-BOP	1/2" - 14 NPTF	Steel	3.08	78.2	1.98	50.3	30	0.62	-	15	171.37
3/4	6VEPF6-BOP	3/4" - 14 NPTF	Steel	3.37	85.6	2.19	55.6	38	0.77	-	1	236.77
1	8VEPF8-BOP	1" - 11 1/2 NPTF	Steel	3.89	98.8	2.46	62.5	44	1.11	-	1	235.78
1 1/4	10VEPF10-BOP	1 1/4" - 11 1/2 NPTF	Steel	4.40	111.8	2.70	68.6	55	1.71	-	1	318.88
1 1/2	12VEPF12-BOP	1 1/2" - 11 1/2 NPTF	Steel	5.28	134.1	3.74	95.0	63	4.13	-	1	964.34

Price Group: PC
AP16

G VEP-BOP Series Hydraulic Nipples



VEP-BOP Series Blowout Prevention Safety Nipple (Female Threads)												
Size (inch)	Part Detail			Length		Maximum OD		Hex mm	Weight Kgs	Package Qty		Price \$ (ea)
	Part No.	Threads	Material	Inch	mm	Inch	mm			Bag	Box	
3/8	VEP3F3-BOP	3/8" - 18 NPTF	Steel	3.28	83.3	1.48	37.6	25	0.35	-	20	215.70
1/2	VEP4F4-BOP	1/2" - 14 NPTF	Steel	3.87	98.3	1.86	47.2	30	0.59	-	10	242.30
3/4	VEP6F6-BOP	3/4" - 14 NPTF	Steel	4.12	104.6	1.98	50.3	38	0.84	-	1	272.70
1	VEP8F8-BOP	1" - 11 1/2 NPTF	Steel	4.95	125.7	2.20	55.9	44	1.20	-	1	324.40
1 1/4	VEP10F10-BOP	1 1/4" - 11 1/2 NPTF	Steel	5.43	137.9	2.73	69.3	55	1.44	-	1	515.90
1 1/2	VEP12F12-BOP	1 1/2" - 11 1/2 NPTF	Steel	6.63	164.4	3.74	95.0	63	4.10	-	1	1372.90

Price Group: PC
AP16

FOR TECHNICAL GUIDELINES PLEASE REFER TO PAGE 297

