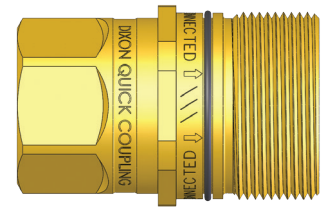


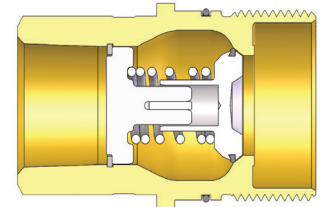
W-Series Thread Together - Nipples

Size (inch)	Part No.	Thread Size (inch)	Body Material	Weight (kg)	Pkg Qty	Price \$ (ea)
¼	W6F4-B	½ - 14 NPTF	Brass	0.37	10	93.60
¼	W6BF4-B	½ - 14 BSPP	Brass	0.37	10	124.80
¼	W6F6-B	¾ - 14 NPTF	Brass	0.34	10	89.20
¼	W6BF6-B	¾ - 14 BSPP	Brass	0.34	10	103.23
1	W8F8-B	1 - 11½ NPTF	Brass	0.59	10	99.97
1	W8F8	1 - 11½ NPTF	Steel	0.59	10	93.61
1	W8BF8-B	1 - 11 BSPP	Brass	0.59	10	98.93
1¼	W10F10-B	1¼ - 11½ NPTF	Brass	0.75	5	144.03
1¼	W10BF10-B	1¼ - 11 BSPP	Brass	0.75	5	134.00
1½	W12F12-B	1½ - 11½ NPTF	Brass	1.18	5	180.45
1½	W12BF12-B	1½ - 11 BSPP	Brass	1.18	5	269.59

Price Group: PC
AP05



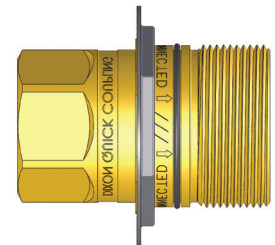
Female Thread



W-Series Thread Together - Nipples with Flanges

Size (inch)	Part No.	Thread Size BSPP (inch)	Body Material	Weight (kg)	Pkg Qty	Price \$ (ea)
¼	W6BF4-B-BMF	½	Brass	0.04	5	79.91
¼	W6BF6-B-BMF	¾	Brass	0.38	5	76.91
1	W8BF8-B-BMF	1	Brass	0.62	5	83.08
1¼	W10BF10-B-BMF	1¼	Brass	0.88	5	121.53
1½	W12BF12-B-BMF	1½	Brass	1.53	5	205.32

Price Group: PC
AP05

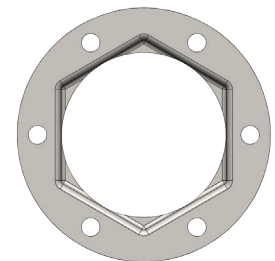


Female Thread

W-Series - Mounting Flanges

Size (inch)	Part No.	Bolt Hole Size (inch)	Body Material	Weight (kg)	Bag Qty	Pkg Qty	Price \$ (ea)
¼	W6-BMF	¼	Steel	0.03	5	50	9.82
1	W8-BMF	¼	Steel	0.03	5	50	15.82
1½	W12-BMF	¾	Steel	0.34	5	50	5.69

Price Group: PC
AP05



Although the wingstyle couplings are able to connect and disconnect while under pressure, it is recommended that hydraulic power supply be de-energized during connection to ensure operator safety. If it is not possible to de-energize the circuit, operators must be aware of their surroundings to ensure that an attachment or tool does not put them at risk, once hydraulic power is applied during the connection process.
W-Series couplings are not recommended for continuous hydraulic impulse applications at rated pressures.

- NPTF & ORB thread styles also available.
- A complete range of seal options are available.

FOR TECHNICAL GUIDELINES PLEASE REFER TO PAGE 280



1300 134 651
dixonvalve.com.au

All prices exclude GST.
ADPL718