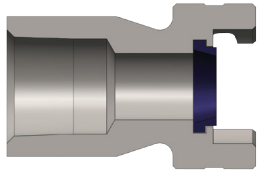
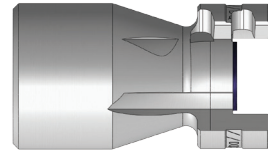


**P-Series Dual Lock Nipple**



Female Thread

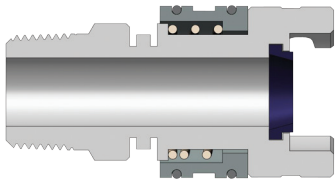


**P-Series Thor Interchange Nipple**

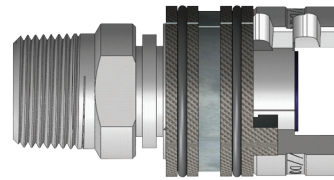
Body Size (inch)	Part No.	Threads	Material	Length		Maximum OD		Wrench Flats (inch)	Weight (kg)	Pkg Qty		Price \$ (ea)
				inch	mm	inch	mm			Bag	Box	
½	P4F3	¾"-18 NPTF	Steel	1.79	45.5	1.55	39.4	¾	0.22	-	25	44.13
½	P4F4	½"-14 NPTF	Steel	2.25	57.2	1.55	39.4	1½/16	0.34	-	25	26.66
½	P4F4-B	½"-14 NPTF	Brass	2.25	57.2	1.55	39.4	1½/16	0.38	-	25	56.63
½	P4F6	¾"-14 NPTF	Steel	2.34	59.4	1.55	39.4	1½/16	0.30	-	25	39.32
½	P4F6-9	¾"-14 NPTF	Steel/Tefcoat	2.34	59.4	1.55	39.4	1½/16	0.30	-	25	77.58
½	P4F6-B	¾"-14 NPTF	Brass	2.34	59.4	1.55	39.4	1½/16	0.34	-	25	53.87
½	P4F6-S	¾"-14 NPTF	303 Stainless	2.34	59.4	1.55	39.4	1½/16	0.31	-	25	127.72
½	P4F8	1"-11½ NPTF	Steel	2.76	70.1	1.55	39.4	1½/16	0.33	-	25	29.28
½	P4F8-B	1"-11½ NPTF	Brass	2.76	70.1	1.55	39.4	1½/16	0.35	-	25	72.72

Price Group: PC  
AD07

**G P-Series Dual Lock Coupler**



Male Thread

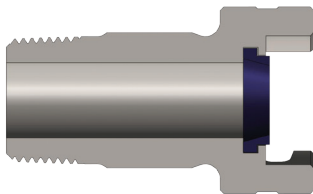


**P-Series Thor Interchange Coupler**

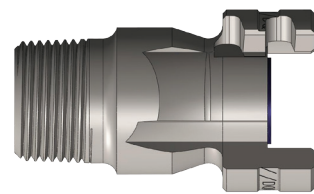
Body Size (inch)	Part No.	Threads	Material	Length		Maximum OD		Wrench Flats (inch)	Weight (kg)	Pkg Qty		Price \$ (ea)
				inch	mm	inch	mm			Bag	Box	
½	4PM3	¾"-18 NPTM	Steel	2.93	74.4	1.55	39.4	¾	0.22	-	25	38.57
½	4PM4	½"-14 NPTM	Steel	2.98	75.7	1.55	39.4	¾	0.22	-	25	40.18
½	4PM6	¾"-14 NPTM	Steel	2.98	75.7	1.55	39.4	1½/16	0.23	-	25	49.41
½	4PM6-9	¾"-14 NPTM	Steel/Tefcoat	2.98	75.7	1.55	39.4	1½/16	0.23	-	25	126.87
½	4PM6-S	¾"-14 NPTM	303 Stainless	2.98	75.7	1.55	39.4	1½/16	0.23	-	25	223.63
½	4PM8	1"-11½ NPTM	Steel	3.11	79.0	1.55	39.4	1"	0.25	-	25	94.33

Price Group: PC  
AD07

**P-Series Dual Lock Nipple**



Male Thread



**P-Series Thor Interchange Nipple**

Body Size (inch)	Part No.	Threads	Material	Length		Maximum OD		Wrench Flats (inch)	Weight (kg)	Pkg Qty		Price \$ (ea)
				inch	mm	inch	mm			Bag	Box	
½	P4M3	¾"-18 NPTM	Steel	2.00	50.8	1.55	39.4	¾	0.13	-	25	45.06
½	P4M4	½"-14 NPTM	Steel	2.25	57.2	1.55	39.4	1½/16	0.15	-	25	23.81
½	P4M4-B	½"-14 NPTM	Brass	2.25	57.2	1.55	39.4	1½/16	0.16	-	25	35.02
½	P4M6	¾"-14 NPTM	Steel	2.55	64.8	1.55	39.4	1"	0.20	-	25	39.46
½	P4M6-9	¾"-14 NPTM	Steel/Tefcoat	2.55	64.8	1.55	39.4	1"	0.20	-	25	76.64
½	P4M6-B	¾"-14 NPTM	Brass	2.55	64.8	1.55	39.4	1"	0.22	-	25	50.53
½	P4M6-S	¾"-14 NPTM	303 SS	2.55	64.8	1.55	39.4	1"	0.21	-	25	125.12
½	P4M8	1"-11½ NPTM	Steel	3.25	82.6	1.55	39.4	1"	0.28	-	25	44.24
½	P4M8-B	1"-11½ NPTM	Brass	3.25	82.6	1.55	39.4	1"	0.30	-	25	65.57

Price Group: PC

FOR TECHNICAL GUIDELINES PLEASE REFER TO PAGE 255

