

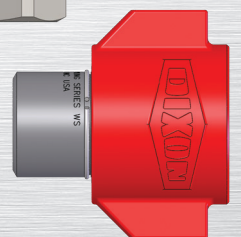


The Right Connection®

Dixon Quick Disconnects Product Range



dixonvalve.com.au
customerservice@dixonvalve.com.au



Dixon Quick Disconnects Product Range

HT SERIES

Applications

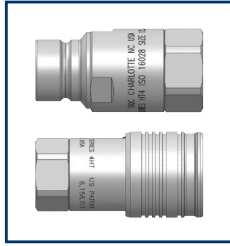
- Construction equipment: skid-Steer, Bobcat™ & excavator attachments, hand tools
- Mobile transport: walking floor trailers, side tipper, snowploughs
- Petro-chemical and Pharmaceutical (chemical transfer)
- Oil platforms: platform lifts, platform walking stilts and hand tools

Body Materials

- Steel & SS316

Features

- Unique DORS coupler valve design, high flow, low pressure drop
- Compact shorter overall length and reduced weight
- No spill design and improved laminar flow
- Locking sleeve, push to connect



Standards

- ISO 16028
- HTMA (Hand Tool Manufacturers Association – 3/8" only)

Sizes

- 1/4" to 2" – BSP NPT ORB (UNF)

Interchange

- ISO 16028, Parker FEM, Stucchi A/ FIRG/AX, Eaton/ Aeroquip FD89,
- CEJN X65/ X66, TEMA IF, Faster FFH/FFN/ FFI/2FFN/2FFI, Snap-Tite 74,
- Hansen FF/ QA29000

HTE SERIES EQUALISER

Applications

- Hydraulic applications where connecting against residual pressure is required
- Mobile construction equipment: skid-steer, Bobcat™ & excavator attachments, hand tools

Body Materials

- Steel & SS316

Features

- For use with HT or HTZ couplers
- Connect Under Residual Pressure Design
- Non-linear connection for at all pressures – Max WP 5000PSI at 21
- Connectable with trapped pressure on HTE half only

Standards

- ISO 16028



Sizes

- 3/8" to 1" – BSP NPT & ORB (UNF)

Interchange

- ISO 16028, Parker FEC, Stucchi APM, CEJN X64, Faster 3FFH,
- Hansen FF/ QA29000, DNP PLK4

HTZ SERIES

Applications

- Hydraulic applications where connecting against residual pressure is required
- Mobile construction equipment: skid-steer, Bobcat™ & excavator attachments, hand tools

Body Materials

- Steel

Features

- For use with HT or HTE Nipples
- Connect Under Residual Pressure up to 1500 PSI at 21°C
- Connectable with trapped pressure on HTZ half only
- Max WP 5000 PSI at 21°C



Standards

- ISO 16028

Sizes

- 1/2" – NPT & ORB (UNF)

Interchange

- ISO 16028, Stucchi A-HD, Faster 3FFH

VEP SERIES

Applications

- High impulse hydraulic applications
- Excavators attachments; thumbs, grapples, hammers, compactors, vibrations units, cranes, drilling & boring equipment, BOP Systems, Oil field, well head drives, porta-power

Body Materials

- Steel

Features

- Screw together connection eliminates brinelling
- Blow-out prevention coupling critical seals are severe service FKM
- Connect/Disconnect under residual pressure
- Red powder coated components & external O-rings for BOP service ID



Standards

- BOP – Lloyd's API 16D (3/8" – 1.1/2" NPT only)

Sizes

- 1/4" to 2" – BSP NPT ORB (UNF)

Interchange

- Parker FET, Stucchi VEP/VEP-HD, DNP PST4/FSI FSI-BOP, Holmbury HFT Series

ST SERIES

Applications

- Oil platforms: Hydraulic supply lines, rig, tongs jack up lifts & control shack line
- Construction equipment: Pile-drivers, tampers, underground boring hammers
- Offshore: Hydraulic tools & supply reels

Body Materials

- Steel, SS316

Features

- Machined components manufactured using solid steel or SS316 bar stock
- Stainless steel balls, retaining rings and spring maximise corrosion resistance
- Steel componentry is plated using ROHS Compliant Trivalent Chrome



Standards

- N/A

Sizes

- 1/4" to 2" - BSP NPT ORB (UNF)

Interchange

- Snap-Tite 71 series

V SERIES

Applications

- Oil Platforms, construction equip, offshore equipment, manufacturing equipment, pharmaceutical, in plant systems, hydraulic pumps, general fluid transfer

Body Materials

- Steel, Brass, SS316

Features

- Stainless Steel balls, retaining rings and springs maximise corrosion resistance
- Steel coupler sleeves hardened to resist deformation
- Valved coupler does not require valved nipple



Standards

- MIL-C-51234

Sizes

- 1/4" to 2" – BSP, NPT, ORB

Interchange

- Snap-Tite H/IH, Faster TNV/TNL

Dixon Quick Disconnects Product Range

H SERIES

Applications

- Oil platforms: Hydraulic supply lines, tongs and hydraulic circuits, tools
- Construction equipment & vehicle attachments, hand tools
- Food & Beverage process & equipment
- Industrial: Pneumatic tools, hydraulic tools, directional drilling, carpet cleaning

Body Materials

- Steel, Brass, SS303 & SS316

Features

- Nitrile (Buna-N) seals standard - temperature range of -40°C to 121°C
- Stainless Steel balls maximise corrosion resistance
- Steel coupler sleeves hardened to resist deformation



Standards

- ISO 7241 Series 'B'
- ANSI B93.113M-B

Sizes

- 1/8" to 2 1/2" – BSP, NPT, ORB

Interchange

- ISO 7241 B, Parker 60, Eaton/Aeroquip FD45, Tema IB series, Snap-Tite 72, Faster HNV, Hansen HK, Stucchi IRB/IRBO/IRBX

H SERIES BOP

Applications

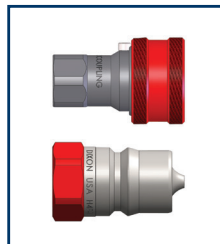
- Specifically designed for blow-out preventer systems on drilling rigs

Body Materials

- Steel, Brass, SS303 & SS316

Features

- Blow-out Preventor coupling critical seals are severe service FKM
- Coupler has redundant O-ring sealing system
- Red powder coated coupler sleeve & nipple hex for BOP service ID
- SS balls, retaining rings & springs maximise corrosion resistance



Standards

- ISO 7241 Series 'B'
- BOP – Lloyd's Certified in accordance with API 16D

Sizes

- 3/8" to 1" – NPT

Interchange

- ISO 7241 B, Eaton/Hansen HKFR, DNP HNV-BOP

HS SERIES

Applications

- Designed exclusively for steam applications

Body Materials

- Steel, Brass, SS303

Features

- EPDM STEAM GRADE seals standard - temperature range of -57°C to 204°C
- Valve seals are crimped in place to maintain high flow service integrity
- All couplers have large diameter steel steam sleeve as standard



Standards

- ISO 7241 Series 'B'
- ANSI B93.113M-B

Sizes

- 1/4" to 1" – BSP, NPT

Interchange

- ISO 7241 B, Parker 60 steam couplings

K SERIES

Applications

- Mobile application; Dump truck, waste trucks, truck trailer connection, excavators, backhoes, hydraulic hand tools, drill pipe rig tongs, snow and wing ploughs and underground rock drills, paper mills
- Construction, mining & steel production equipment, vehicle attachments

Body Materials

- SS316, 1/4" – 1"
- Steel, 1/4" – 2"

Features

- Stainless Steel balls, retaining rings and springs maximise corrosion resistance
- Steel coupler sleeves hardened to resist deformation



Standards

- ISO 7241 Series 'A'
- ANSI/NFPA B93.113M-A

Sizes

- 1/4" to 2" – BSP, NPT, ORB

Interchange

- Parker 6600, Eaton/Aeroquip FS56 (5600), Faster ANV, Hansen HA15000, Safeway S56, Stucchi BIR, DNP PAV1/PAVX, CEJNX95

AG SERIES

Applications

- Irrigation supply lines, dump truck, waste trucks, truck trailer connection, Excavators, backhoes, hydraulic hand tools
- Construction, mining & steel production equipment, vehicle attachments, Bobcat™, skid-steer, earthmoving, mining & industrial equipment snow plow, tractors

Body Materials

- Steel, 1/4" – 1"

Features

- Available in both ball & poppet style valves
- Push pull coupler connection available
- Stainless steel balls, retaining rings and springs maximise corrosion resistance



Standards

- Steel coupler sleeves hardened to resist deformation
- ISO 7241 Series 'A' – 1/2" & 3/4" only
- ISO5675 3/4" only

Sizes

- 1/4" to 1" – BSP, NPT, ORB

Interchange

- Parker/Pioneer 4000, PARKER 4200, Eaton/Aeroquip FD42, Faster NS/NV, Safeway S20/S40, Stucchi IRV/I-IP, DNP PDV/PPV

TR SERIES

Applications

- Transport / trailers, offshore, deep sea, construction, industrial & chemical

Body Materials

- Steel, SS316

Features

- Pressure Eliminator Range available
- Couplers have a PTFE anti extrusion ring

Standards

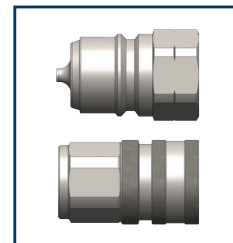
- N/A

Sizes

- 1/4" to 1" - BSP, NPT

Interchange

- Parker H, TEMA T (2500, 3800, 5000, 7500, 10000), CEJN 525/526, Stucchi IRC



Dixon Quick Disconnects Product Range

W SERIES

Applications

- Oilfield platforms, mobile transport connection, wet-line hydraulic systems, submersible pumps

Body Materials

- Brass Body, Cast Iron Nut, Steel

Features

- Connection under residual pressure
- New valve design for improved laminar flow performance
- Main coupler valve has a bonded face-seal to improve seal integrity during pressurised connection/disconnection

Standards

- N/A

Sizes

- ¼" to 1.1/2" – BSP, NPT

Interchange

- N/A



WS SERIES

Applications

- Used extensively in oil field & off shore oil rigs, platforms
- Construction, & hydraulic supply lines, high pressure industrial application

Body Materials

- Steel, SS316

Features

- Screw together connection or disconnect under pressure
- One piece sand cast steel HD wing nut
- SS nipple connection threads are coated to prevent galling

Standards

- N/A

Sizes

- ¾" to 2" – BSP, NPT, ORB

Interchange

- Eaton/Aeroquip FD85, Faster OGV, Snap-Tite 75, Stucchi VOF, Hydraulic Inc. 5TV,
- DNP VFF-HD



WS SERIES BOP

Applications

- Designed for blow-out preventer systems

Body Materials

- Steel, SS316

Features

- Blow-out preventer coupling critical seals are severe service FKM
- Red powder coated coupler sleeve (wing nut) & nipple O-ring hex for BOP service ID
- One piece sand cast steel HD wing nut

Standards

- BOP – Lloyds certified in accordance with API 16D

Sizes

- ¾" to 2" – NPT

Interchange

- Snap-Tite 75, DNP VFF-HD BOP



T SERIES

Applications

- Hydraulic pumping equipment, Hydraulic toe jacks, Hydraulic bottle jacks, Rescue cutting equipment, Hydraulic jack up units

Body Materials

- Steel & SS316

Features

- Both ball & poppet valves available
- Chrome steel ball mechanically seated for low pressure performance

Standards

- ISO 14540



Sizes

- ¼" to 3/8"

Interchange

- Parker/Pioneer 3000, Enerpac® C604, Stucchi IV-HP, Hansen WA56000, Snap-Tite 76 series, DNP PVM/PVS, Faster PVVM, Safeway S30

PD SERIES

Applications

- Hydraulic circuit pressure testing & diagnostics

Body Materials

- Steel

Features

- ROHS Compliant Trivalent Chrome plating
- Steel nipples machined from solid steel bar stock & hardened

Standards

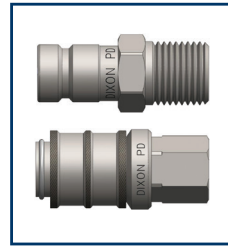
- ISO 15171-1
- SAE J1502

Sizes

- 1/8" – NPT, ORB

Interchange

- Parker PD, Faster DF, Eaton Aeroquip FD90, Tomco DK



CVV SERIES

Applications

- Construction equipment, manufacturing machinery, fluid transfer, hydraulic rams, pumps, crushers and impulse application

Body Materials

- Steel

Features

- European screw together
- Machined components manufactured using solid steel bar stock
- ROHS compliant trivalent chrome plated



Standards

- ISO 14541 (¼" – ¾" Only)

Sizes

- ¼" to 1" - NPT, BSP, ORB, METRIC M14, M16, M18, M22

Interchange

- Faster CVV, Stucchi VD, DNP PVV3

High quality solutions for safe reliable performance

Dixon is a premier manufacturer and supplier of hydraulic and pneumatic Quick Disconnect Coupling products for a wide range of applications. With an unsurpassed reputation Dixon is committed to providing value added services, superior customer service, technical support and training to a wide range of industries.

With over 75 years of Global experience, Dixon utilises its market knowledge and engineering excellence to provide interchange solutions which ensure a maximum level of safety, are made of high quality materials and deliver ongoing reliability. Every fitting is built to last longer and perform better in the right applications.

With our global distribution footprint Dixon can efficiently service our customers with the right connections at the right time.

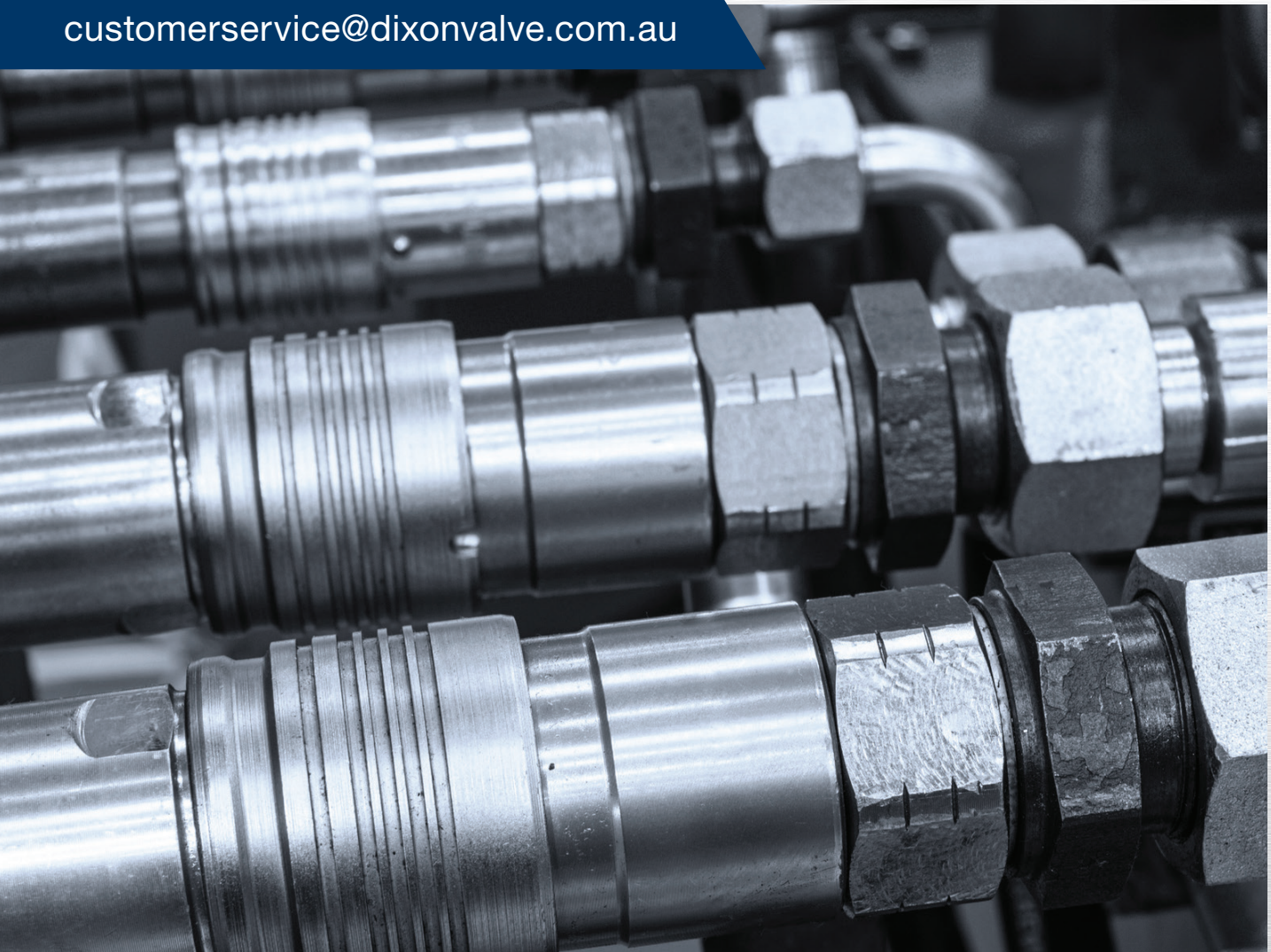
Ultimately our most important connection is with our customers and Dixon is committed to being the easiest company to do business with everyday.

Andrew Prentice
Managing Director, Dixon (Asia Pacific)
Group Vice President, Dixon Overseas Operations.



The Right Connection®

dixonvalve.com.au
customerservice@dixonvalve.com.au



Dixon designs and manufactures just the right solution to meet those special fluid transfer challenges where a standard product just won't do.

The difference boils down to commitment. It's called *Uncommon Excellence*[™] – and we've been living it for over a century.



The Right Connection[®]

• CUSTOMER SERVICE • INNOVATION • MANUFACTURING •
• QUALITY • TECHNICAL EXPERTISE • EXCELLENCE • DESIGN •