



Vintage 2025

Hose • Fittings • Clamps
Valves • Accessories

1300 134 651 | dixonvalve.com.au

Industrial Hose

Food & Beverage Delivery Hose (A605) 6

Food, Milk & Beverage Suction/Delivery Hose (A621R) 6

Food & Wine Suction/Delivery Hose (A625) 7

Food, Milk & Beverage Suction/Delivery Hose (A635) 7

Water Suction/Delivery Hose (A210) 8

Water Suction/Delivery Hose (A210) 8

Water Suction/Delivery Hose Assembly (A210) 8

Multi-Purpose Non-Conductive Hose (A104) 9

Hot Water Washdown (A225)..... 10

FDA Hot Water Washdown (A226) 10

Fabric Reinforced Steam - FDA (A236) 11

UHMW Polyethylene Suction/Delivery (A416) 11

Wine & Beverage Heavy-Duty Suction Hose (AUSFB) 12

Wine & Beverage Suction/Delivery VACPRES Hose (AUSFBS) 12

TPR/Food Grade Hose (H020) 13

White Washdown (H060) 13

Superflex Yellow/Blue Hose (H210) 14

Superflex Yellow/Blue Hose Assembly (H210) 14

Accessories

High Flow Heavy-Duty Hot Washdown Gun 16

Flow Boss™ Heavy-Duty Washdown Gun..... 16

Hose Glide Rings 16

Australian Standard Hose Reels 16

Stems and Ferrules

Holedall™ BSM (RJT) External Crimp Stem 18

Holedall™ Clamp Type/External Crimp Stem 18

14-SHB-Series Sanitary Hose Bumper..... 19

Dixon™ Sanitary King Crimp™ Stems 20

Light Weight External King Crimp™ Ferrules 21

Wine Female Crimp Stem 22

Butt Weld Tube Crimp Stem 22

BSM CIP Crimp Stem 22

Inline Hose Strainer 22

NZ RJT Crimp Stem 22

Holedall™ External Crimp Ferrules..... 23

Clamps

Dixon™ Worm Gear Clamps 26

Dixon™ Miniature Worm Gear Clamps 27

Dixon™ HTML Hi Torque Worm Gear Clamps 27

Quick Release Worm Gear Clamps 27

T-Bolt Super Clamps - W4 28

T-Bolt Super Clamps - W1 29

Universal Preformed Band Style Clamps 30

Ultra-Lok® Band Style Clamping Systems 30

Band Clamp Hand Tools..... 31

Fittings

BSM Union (RJT) Fittings..... 34
 BSM (RJT) O-Rings..... 36
 Double Rolled Hose Tail..... 36
 NZ RJT Fittings 37
 Wine Fittings 38
 Stainless Steel Sanitary Clamps 39
 Sanitary Gaskets 41
 Gaskets for Clamp Style Sanitary Fittings 42
 Polished Butt Weld & Clamp Fittings 44
 SJSS Swivel Series 48
 Sanitary Breakaway Couplings..... 48
 BSP Tube Adaptors - Stainless Steel..... 45
 BSP Threaded Pipe Fittings 49

Valves

B5107 Series Butterfly Valves 56
 Vertical Spring Return Actuation Butterfly Valves 59
 HSC Series Spring Check Valves 61
 Ball Valves 62
 Dixon™ Rieger Aseptic Type Valves 64
 SSV Series Single Seat Hygienic Valves 65
 Pneumatic Control Angle Valves..... 65
 Dixon™ Rieger Control Valves & In Aseptic Version..... 66
 Mini Aseptic Sampling Valve 67
 BioCheck Combi Sampling Valves with Steam Valve 67
 BSV Series 3A Sample Valves 68
 Dixon™ Rieger Safety Valves..... 69
 SOV Series Manual & Pneumatic Overflow Valve..... 69
 SPR Series Pressure Relief Valves..... 70
 Stainless Steel Knife Gate Valves 71

Tank Accessories

Sight Glasses 74
 Clamp Spray Ball - Rotating 75
 Spray Balls..... 76
 BSP Lockable Sample Tap 77
 Air & Vacuum Relief Tank Vent Valve..... 77

Camlocks

Dixon™ Standard Camlocks 80
 Butt Weld Tube End Adaptors and Couplers 81





Industrial Hose

Providing high-quality hose in the winemaking industry, our range includes food and beverage suction and delivery hoses in both rubber and PVC, multi-purpose hoses, washdown hoses, and steam hoses. Designed for safe and efficient liquid transfer, our hoses ensure your winemaking process runs smoothly and reliably.



Food & Beverage Delivery Hose (A605)

Applications

- Flexible discharge hose suitable for the transfer of alcoholic beverages containing up to 36% alcohol content including beer and wine, also suitable for a variety of other beverages and food products, including soft drinks, fruit juices, and potable water.

Features

- Food grade FDA approved
- Abrasion resistant
- Weather and ozone resistant
- Mandrel built

Temperature

- -40°C to 95°C
- Steam cleaning without pressure up to 130°C/max. 30 min.

Hose Construction

- Tube: NR food grade - white
- Cover: EPDM blend, smooth - red
- Reinforcement: high tensile synthetic textile cords

Standards

- FDA title 21 art. 177.2600 (e) for liquid foods, BfR, KTW, PHTHALATE free



Dimensions (mm)		Part Numbers		Working Pressure		Bend Radius (mm)	Weight (kg/mtr)
ID	OD	Cut Length	Coil 20m	psi	bar		
25.4	37.0	A605025	A60502520	150	10	150	0.55
38.1	50.0	A605040	A60504020	150	10	300	1.65
50.8	64.0	A605050	A60505020	150	10	350	1.70
76.2	90.0	A605080	A60508020	150	10	450	3.40
101.6	117.0	A605100	A60510020	150	10	650	4.90

Food, Milk & Beverage Suction/Delivery Hose (A621R)

Applications

- Flexible suction and discharge hose suitable for the transfer of alcoholic beverages containing up to 36% alcohol content including beer and wine, also suitable for a variety of other beverages and food products, including soft drinks, fruit juices, and potable water.

Features

- Food grade FDA approved
- Abrasion resistant
- Weather and ozone resistant
- Mandrel built

Temperature

- -40°C to 95°C
- Steam cleaning without pressure up to 130°C/max. 30 min.

Hose Construction

- Tube: NR food grade - white
- Cover: EPDM blend, smooth - red
- Reinforcement: high tensile synthetic textile cords

Standards

- FDA title 21 art. 177.2600 (e) for liquid foods, BfR, KTW, PHTHALATE free



Dimensions (mm)		Part Numbers		Working Pressure		Bend Radius (mm)	Weight (kg/mtr)
ID	OD	Cut Length	Coil 20m	psi	bar		
25.4	37.0	A621R025	A621R025020	150	10	150	0.75
31.8	44.0	A621R032	A621R032020	150	10	225	1.00
38.1	52.0	A621R040	A621R040020	150	10	300	1.35
50.8	65.0	A621R050	A621R050020	150	10	350	1.85
63.5	79.0	A621R065	A621R065020	150	10	400	2.88
76.2	93.0	A621R080	A621R080020	150	10	450	3.39
101.6	120.0	A621R100	A621R100020	150	10	650	4.91

Food & Wine Suction/Delivery Hose (A625)

Applications

- Premium quality flexible suction and discharge hose featuring a crush-resistant PE helix and high-temperature resistant chlorobutyl rubber tube, ideal for the transfer of beverages containing up to 96% alcohol content including beer and wine, also suitable for many other beverages and foodstuffs including soft drinks, fruit juices and potable water.

Features

- Food grade FDA approved
- Crush resistant PET helix
- Abrasion resistant
- Weather and ozone resistant
- Mandrel built

Hose Construction

- Tube: IIR Butyl food grade - white
- Cover: smooth (wrapped finish) EPDM blend - red
- Reinforcement: high tensile synthetic textile cords, embedded PET helix

Temperature

- -40°C to 120°C
- Steam cleaning without pressure up to 140°C/max. 30 min.

Standards

- FDA title 21 art. 177.2600 (e) for liquid foods, BfR, KTW, PHTHALATE free

Dimensions (mm)		Part Numbers		Pressures Working		Vacuum (bar)	Bend Radius (mm)	Weight (kg/mtr)
ID	OD	Cut Length	Coil 20m	psi	bar			
25.4	37.0	A625025	A625025020	150	10	0.9	115	0.90
31.8	44.0	A625032	A625032020	150	10	0.9	145	1.19
38.1	50.0	A625040	A625040020	150	10	0.9	180	1.57
50.8	65.0	A625050	A625050020	150	10	0.9	245	1.91
63.5	79.5	A625065	A625065020	150	10	0.9	310	2.82
76.2	93.0	A625080	A625080020	150	10	0.9	390	3.45
101.6	120.0	A625100	A625100020	150	10	0.9	555	4.89



Food, Milk & Beverage Suction/Delivery Hose (A635)

Applications

- Highly flexible spiral-reinforced hose designed for managing the transportation and transfer of milk, loading and unloading tankers, dairy unloading bays and equipment within processing and filling facilities. This versatile hose is also suitable for conveying alcoholic beverages containing up to 36% alcohol content including beer, wine and cider, along with a variety of additional liquid food products, including soft drinks, fruit juices, and potable water.

Features

- Food grade FDA approved
- Abrasion resistant
- Weather and ozone resistant
- Mandrel built

Hose Construction

- Tube: NR food grade - white
- Cover: smooth (wrapped finish) NR blend - blue
- Reinforcement: high tensile synthetic textile cords, double embedded steel wire helix

Temperature

- -40°C to 95°C
- Steam cleaning without pressure up to 130°C/ max. 30 min.

Standards

- FDA title 21 art. 177.2600 (e) for liquid foods, BfR, KTW, PHTHALATE free

Dimensions (mm)		Part Numbers		Working Pressure		Vacuum (bar)	Bend Radius (mm)	Weight (kg/mtr)
ID	OD	Cut Length	Coil 20m	psi	bar			
19.1	30.0	A635020	A635020020	90	6	0.9	50	0.65
25.4	36.0	A635025	A635025020	90	6	0.9	50	0.70
31.8	43.0	A635032	A635032020	90	6	0.9	65	0.80
38.1	49.0	A635040	A635040020	90	6	0.9	80	1.20
50.8	63.0	A635050	A635050020	90	6	0.9	105	1.80
63.5	75.0	A635065	A635065020	90	6	0.9	130	2.20
76.2	90.0	A635080	A635080020	90	6	0.9	155	3.10
101.6	115.0	A635100	A635100020	90	6	0.9	350	3.70



Water Suction/Delivery Hose (A210)

Applications

- Water and light slurry suction and delivery hose used in a variety of applications.

Features

- Ozone and weather resistant
- Oil mist resistant
- Abrasion resistant
- Mandrel built

Hose Construction

- Tube: SBR - black
- Cover: SBR/EPDM blend, smooth - black
- Reinforcement: high tensile synthetic textile cords, steel wire helix

Temperature

- -30°C to 80°C



Dimensions (mm)		Part Numbers		Working Pressure		Vacuum (bar)	Bend Radius (mm)	Weight (kg/mtr)
ID	OD	Cut Length	Coil 20m	psi	bar			
19.1	28.0	A210020	A21002020	150	10	0.9	70	0.58
25.4	34.0	A210025	A21002520	150	10	0.9	95	0.70
31.8	42.0	A210032	A21003220	150	10	0.9	125	1.00
38.1	48.0	A210038	A21003820	150	10	0.9	150	1.23
50.8	62.0	A210050	A21005020	150	10	0.9	215	1.70
63.5	75.0	A210065	A21006520	150	10	0.9	280	2.17
76.2	89.0	A210080	A21008020	150	10	0.9	350	3.01
90.0	105.0	A210090	A21009020	150	10	0.9	440	4.00
101.6	115.0	A210100	A21010020	150	10	0.9	490	4.27
127.0	142.0	A210125	A21012520	150	10	0.9	650	5.87
152.4	168.0	A210150	A21015020	150	10	0.9	760	7.68
203.2	222.0	A210200	A21020020	150	10	0.9	1120	12.33
254.0	275.0	A210250	-	150	10	0.9	1525	17.74

Water Suction/Delivery Hose (A210)

Dimensions (mm)		Part Numbers	Length (mtr)	Working Pressure		Bend Radius (mm)	Vacuum (bar)	Weight (kg/mtr)
ID	OD			psi	bar			
152.4	168.0	A210150L3	3	150	10	760	0.93	7.68
152.4	166.0	A210200L3	3	150	10	1120	0.93	12.33

Water Suction/Delivery Hose Assembly (A210)



Dimensions (mm)		Part Numbers	Working Pressure		Length (mtr)	Description
ID	OD		psi	bar		
50.8	67.0	A2100502F	150	10	2	Aluminium camlock coupler/adaptor with double bolt clamps
50.8	67.0	A210050X3CMFAL	150	10	20	Aluminium camlock coupler/adaptor with double bolt clamps
50.8	67.0	A210050020FSKC	150	10	20	Minsup® Surelock® couplings with crimped ferrule
101.6	115.0	A210050X5CMFAL	150	10	5	Aluminium camlock coupler/adaptor with double bolt clamps
101.6	115.0	A210100F	150	10	6	Bauer male and female spigot with closure ring crimped
152.4	168.0	A210150X5CMFAL	150	10	5	Aluminium camlock coupler/adaptor with double bolt clamps
152.4	168.0	A210150F	150	10	3	Bauer male and female spigot with closure ring crimped
203.2	222.0	A210200F	150	10	3	Bauer male and female spigot with closure ring crimped

Multi-Purpose Non-Conductive Hose (A104)

Applications

- Designed with economy in mind, this high quality non-conductive, multi-purpose, extruded rubber hose is the perfect choice for conveying air, oil, water, kerosene, some chemicals and many other applications where the need for oil resistance is high. The versatility of this hose makes it an excellent choice in a range of applications and industries.

Features

- Red, yellow and blue covers allow for colour coding where cross contamination of media can affect the safe operation of plant equipment
- UV stabilised, oil mist resistant, non-conductive

Hose Construction

- Tube: NBR blend - black
- Cover: NBR blend - red, yellow or blue
- Reinforcing: polyester yarn

Temperature

- 20°C to 100°C

Hose Specifications (A104)

Dimensions (mm)		Pressures				Bend Radius (mm)	Weight (kg/mtr)
		Working		Burst			
ID	OD	psi	bar	psi	bar		
6.4	15.9	300	20	1200	80	50	0.29
7.9	17.0	300	20	1200	80	65	0.28
9.5	18.2	300	20	1200	80	75	0.30
12.7	22.0	300	20	1200	80	100	0.40
15.9	26.0	300	20	1200	80	125	0.52
19.1	30.2	300	20	1200	80	155	0.67
25.4	38.0	300	20	1200	80	205	1.00
31.8	45.0	250	17	1000	68	255	1.25
38.1	53.0	250	17	1000	68	305	1.68
50.8	67.0	200	14	800	56	405	2.36

Red

Dimensions (mm)		Part Numbers			
ID	OD	Cut Length	Coil 20m	Coil 30m	Coil 100m
6.4	15.9	A104006*	A104006020	-	A104006100
7.9	17.0	A104008*	A104008020	-	A104008100
9.5	18.2	A104010*	A104010020	-	A104010100
12.7	22.0	A104012*	A104012020	-	A104012100
15.9	26.0	A104016*	A104016020	-	A104016100
19.1	30.2	A104020*	A104020020	-	A104020100
25.4	38.0	A104025*	A104025020	-	A104025100
31.8	45.0	A104032*	-	A10403230	-
38.1	53.0	A104040*	-	A10404030	-
50.8	67.0	A104050*	-	A10405030	-

* Cut lengths available in multiples of 20 meters, charges apply.



Yellow

Dimensions (mm)		Part Numbers		
ID	OD	Cut Length	Coil 20m	Coil 100m
9.5	18.2	A104010YE*	A104010YE020	A104010YE100
12.7	22.0	A104012YE*	A104012YE020	A104012YE100
19.1	30.2	A104020YE*	A104020YE020	A104012YE100
25.4	38.0	A104025YE*	A104025YE020	A104025YE100

* Cut lengths available in multiples of 20 meters, charges apply.



Blue



Dimensions (mm)		Part Numbers		
ID	OD	Cut Length	Coil 20m	Coil 100m
9.5	18.2	A104010BL*	A104010BL020	A104010BL100
12.7	22.0	A104012BL*	A104012BL020	A104012BL100
19.1	30.2	A104020BL*	A104020BL020	A104020BL100
25.4	38.0	A104025BL*	A104025BL100	A104025BL100

* Cut lengths available in multiples of 20 meters, charges apply.

Hot Water Washdown (A225)

Applications

- Designed specifically for delivery of hot water for washdown applications in wineries, food processing facilities, packing houses, bottling plants, breweries and dairies where FDA hose compliance is required.

Features

- Ozone and weather resistant
- Abrasion resistant
- Pinpricked cover

Hose Construction

- Tube: NBR - white
- Cover: smooth NBR - white
- Reinforcement: polyester yarn

Temperature

- -20°C to 90°C



Dimensions (mm)		Part Numbers			Working Pressure		Bend Radius (mm)	Weight (kg/mtr)
ID	OD	Cut Length	Coil 20m	Coil 100m	psi	bar		
12.7	21.9	A225012	A225012020	A225012100	300	20	100	0.47
19.1	30.2	A225020	A225012020	A225020100	300	20	155	0.65
25.4	38.0	A225025	A225012520	A225025100	300	20	205	0.97

FDA Hot Water Washdown (A226)

Applications

- Designed specifically for delivery of hot water for washdown applications in wineries, food processing facilities, packing houses, bottling plants, breweries and dairies.

Features

- Ozone and weather resistant
- Abrasion resistant

Temperature

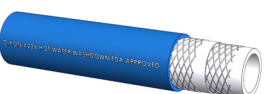
- -20°C to 120°C

Standards

- FDA title 21 art. 177.2600 (e) for liquid foods, BfR, KTW, PHTHALATE free

Hose Construction

- Tube: EPDM blend - white
- Cover: smooth EPDM blend - blue
- Reinforcement: polyester yarn



Dimensions (mm)		Part Numbers		Working Pressure		Bend Radius (mm)	Weight (kg/mtr)
ID	OD	Cut Length	Coil 20m	psi	bar		
12.7	23.0	A226012	A226012020	300	20	100	0.47
19.1	30.0	A226020	A226012020	300	20	155	0.65
25.4	36.0	A226025	A226012520	300	20	205	0.97

Fabric Reinforced Steam - FDA (A236)

Applications

- Constructed using quality FDA-approved materials, this hose is designed for conveying low-pressure saturated steam and delivering hot water for washdown applications in FDA-compliant environments such as wineries, food processing facilities, packing houses, bottling plants, breweries, and dairies.

Features

- Resistant to saturated steam
- Abrasion resistant
- Ozone and weather resistant
- Mylar layline and embossed tape line

Temperature

- -40°C to 170°C

Standards

- FDA title 21 art.177.2600 (e) for liquid foods, BfR, KTW, PHTHALATE free

Hose Construction

- Tube: EPDM - white
- Cover: EPDM blend, smooth (wrapped finish) - blue
- Reinforcement: high tensile synthetic textile cords

Dimensions (mm)		Part Numbers		Working Pressure		Bend Radius (mm)	Weight (kg/mtr)
ID	OD	Cut Length	Coil 20m	psi	bar		
12.7	24.0	A236012	A236012020	100	7	81	0.48
19.1	31.0	A236020	A236020020	100	7	136	0.71
25.4	37.0	A236025	A236025020	100	7	171	0.85



UHMW Polyethylene Suction/Delivery (A416)

Applications

- Multipurpose hose suitable for suction and delivery applications, manufactured with an FDA Approved UHMWPE liner providing excellent resistance to a majority of chemicals including acids, alkalis, salts, chlorinated hydrocarbons and oxidising acids. Also ideal for the transfer of beverages containing up to 96% alcohol content including beer and wine, along with many other beverages and foodstuffs including soft drinks, fruit juices and potable water.

Features

- Ozone and weather resistant
- Abrasion resistant
- Low friction coefficient tube
- Tube resistant to 96% alcohol content

Temperature

- -40°C to 100°C
- Steam cleaning without pressure up to 130°C /max. 30 min.

Standards

- FDA title 21 art.177.2600 (e) for liquid foods, BfR, KTW, PHTHALATE free

Hose Construction

- Tube: UHMWPE, FDA approved - transparent/white
- Cover: smooth EPDM blend - blue
- Reinforcement: high tensile synthetic textile cords, double wire helix, with antistatic copper wire

Dimensions (mm)		Part Numbers		Working Pressure		Vacuum (bar)	Bend Radius (mm)	Weight (kg/mtr)
ID	OD	Cut Length	Coil 20m	psi	bar			
25.4	37.0	A416025	A416025020	240	16	64	80	0.75
31.8	44.0	A416032	A416032020	240	16	64	90	0.85
38.1	52.0	A416040	A416040020	240	16	64	105	1.00
50.8	65.0	A416050	A416050020	240	16	64	130	1.35
63.5	80.0	A416065	A416065020	240	16	64	160	2.00
76.2	93.0	A416080	A416080020	240	16	64	205	2.40
101.6	120.0	A416100	A416100020	240	16	64	280	3.35



Wine & Beverage Heavy-Duty Suction Hose (AUSFB)

Applications

- Heavy-duty suction and delivery hose predominately for wine, beer and spirits up to 15% alcohol content. Also suitable for other liquids including water, soda, juice and syrup handling. Can be used to transfer dry foodstuffs.

Features

- Food grade FDA approved
- Abrasion resistant
- Non-toxic
- UV stabilised

Temperature

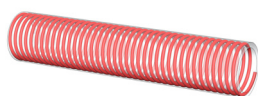
- -20°C to 60°C

Standards

- Conforms to AS 2070 for food contact hoses. Meets EEC directive 90/128 for articles intended for contact with foodstuffs, US FDS 21CFR

Hose Construction

- Tube: smooth non-toxic PVC - transparent
- Cover: smooth non-toxic PVC - transparent
- Reinforcement: rigid PVC embedded helix - red



Dimensions (mm)		Part Numbers		Working Pressure		Vacuum (bar)	Bend Radius (mm)	Weight (kg/mtr)
ID	OD	Cut Length	Coil 20m	psi	bar			
25.4	31.5	AUS025FB	AUS025FB020	90	6.0	18.0	75	0.39
31.8	39.1	AUS032FB	AUS032FB020	80	5.5	16.5	105	0.51
38.1	46.2	AUS040FB	AUS040FB020	75	5.0	15.0	155	0.65
50.8	60.7	AUS050FB	AUS050FB020	75	5.0	15.0	205	1.10
63.5	74.4	AUS065FB	AUS065FB020	75	5.0	15.0	255	1.50
76.2	87.1	AUS080FB	AUS080FB020	60	4.0	12.0	305	1.80
101.6	115.1	AUS100FB	AUS100FB020	50	3.5	10.5	380	3.00

Wine & Beverage Suction/Delivery VACPRES Hose (AUSFBS)

Applications

- A heavy-duty suction and delivery hose, reinforced with a polyester braid for enhanced pressure resistance and a steel helix. Primarily designed for transferring wine, beer, and spirits with up to 15% alcohol content. Also suitable for handling other liquids such as water, soda, juice, and syrup.

Features

- Food grade FDA approved
- Abrasion resistant
- Non-toxic
- UV stabilised

Temperature

- -15°C to 60°C

Standards

- Conforms to AS2070 for food contact hoses. Meets EEC Directive 90/128 for articles intended for contact with foodstuffs, US FDA 21CFR

Hose Construction

- Tube: PVC non-toxic - transparent
- Cover: PVC non-toxic, smooth - transparent
- Reinforcement: polyester braid, embedded steel helix



Dimensions (mm)		Part Numbers	Working Pressure		Vacuum (bar)	Bend Radius (mm)	Weight (kg/mtr)
ID	OD	Coil 20m	psi	bar			
19.1	27.5	AUS020FBS	145	10	0.9	85	0.42
25.4	36.2	AUS025FBS	145	10	0.9	90	0.68
31.8	42.2	AUS032FBS	145	10	0.9	110	0.80
38.1	53.0	AUS040FBS	145	10	0.9	140	1.20
50.8	63.6	AUS050FBS	145	10	0.9	170	1.60

TPR/Food Grade Hose (H020)

Applications

- Manufactured from high-quality PVC, boasting outstanding flexibility, featuring a glass-clear translucent appearance with a hint of blue, ensuring excellent visibility of transferred products. This versatile hose is perfectly suited for a wide range of applications, including the transfer of air, water, food and beverage items, as well as petroleum products.

Features

- UV stabilised
- Abrasion resistant
- Oil mist resistant

Temperature

- -5°C to 60°C

Standards

- AS/NZS 2554 Class B

Hose Construction

- Tube: PVC - transparent
- Cover: PVC smooth - transparent
- Reinforcement: polyester yarn with red spiral tracer

Dimensions (mm)		Part Numbers			Working Pressure		Bend Radius (mm)	Weight (kg/mtr)
ID	OD	Cut Length	Coil 20m	Coil 100m	psi	bar		
6.4	12.0	H02006MTR	H02006020	H02006100	232	16	75	0.12
7.9	14.0	H02008MTR	H02008020	H02008100	232	16	95	0.16
9.5	16.0	H02010MTR	H02010020	H02010100	232	16	120	0.18
12.7	19.0	H02012MTR	H02012020	H02012100	232	16	150	0.22
15.9	24.0	H02016MTR	H02016020	H02016100	232	16	180	0.32
19.1	28.0	H02020MTR	H02020020	H02020100	232	16	240	0.47
25.4	35.0	H02025MTR	H02025020	H02025100	232	16	300	0.65
31.8	43.0	H02032MTR	H02032020	H02032100	150	10	385	0.88
38.1	50.5	H02040MTR	H02040020	H02040100	150	10	480	1.12
50.8	63.5	H02050MTR	H02050020	H02050100	150	10	600	1.60



White Washdown (H060)

Applications

- Designed with superior flexibility and crafted from premium PVC, this hose is specifically tailored for low-pressure, cold-water delivery, making it an ideal choice for washdown purposes. It also serves exceptionally well for general watering tasks.

Features

- UV stabilised
- Abrasion resistant
- Extruded

Hose Construction

- Tube: PVC - blue
- Cover: PVC smooth - white
- Reinforcement: polyester yarn

Temperature

- -5°C to 60°C

Dimensions (mm)		Part Numbers		Working Pressure		Bend Radius (mm)	Weight (kg/mtr)
ID	OD	Coil 20m	Coil 100m	psi	bar		
12.7	19.0	H0601220	H06012100	150	10	150	0.22
19.1	27.0	H0602020	H06020100	150	10	240	0.41
25.4	34.0	H0602520	H06025100	150	10	300	0.56
31.8	43.0	H0603220	H06032100	150	10	380	0.90
38.1	50.5	H0604020	H06040100	150	10	480	1.00



Superflex Yellow/Blue Hose (H210)

Applications

- Manufactured with excellent flexibility in high visibility yellow with blue stripe, a premium PVC air and water pressure hose is ideal for use in heavy-duty compressed air and water applications in a multitude of industries.

Features

- UV stabilised
- Abrasion resistant
- Oil mist resistant
- Extruded

Temperature

- -5°C to 60°C

Standards

- Conforms to AS/NZS 2554 Class A

Hose Construction

- Tube: PVC - black
- Cover: PVC ribbed with single smooth stripe - yellow with blue stripe
- Reinforcement: polyester yarn



Dimensions (mm)		Part Numbers			Working Pressure		Bend Radius (mm)	Weight (kg/mtr)
ID	OD	Cut Length	Coil 20m	Coil 100m	psi	bar		
6.0	11.4	H21006MTR	H21006020	H21006100	300	20	75	0.12
8.0	14.6	H21008MTR	H21008020	H21008100	300	20	95	0.16
10.0	16.4	H21010MTR	H21010020	H21010100	300	20	120	0.18
12.7	18.9	H21012MTR	H21012020	H21012100	300	20	150	0.22
20.0	29.0	H21020MTR	H21020020	H21020100	300	20	240	0.47
25.0	35.0	H21025MTR	H21025020	H21025100	300	20	300	0.65
32.0	43.0	H21032MTR	H21032020	-	300	20	385	0.88
40.0	50.4	H21040MTR	H21040020	-	300	20	480	1.12
50.0	63.5	H21050MTR	H21050020	-	300	20	600	1.60

Superflex Yellow/Blue Hose Assembly (H210)



Dimensions (mm)		Part Numbers	Working Pressure		Length (mtr)	Description
ID	OD		psi	bar		
12.7	18.9	H21012020F	300	20	20	Minsup® A-Type couplings with ring crimp ferrules
25.0	35.0	H21025020F	300	20	20	Minsup® A-Type couplings with band clamp
40.0	54.4	H21040020F	300	20	20	Minsup® Surelock® couplings with band clamps



Accessories

Providing a comprehensive range of high-quality accessories to support your winery's operations, we offer washdown guns designed for effective and efficient cleaning, ensuring your equipment and surfaces are maintained to the highest standards. Additionally, we provide hose glide rings to protect hoses and fire and washdown reels to further enhance your cleaning and safety protocols.



High Flow Heavy-Duty Hot Washdown Guns

Application

- Suitable for washdown in wineries, commercial kitchens or used in other industrial washdown applications.

Features

- Heavy-duty washdown gun
- Flow rate at 300 PSI is 60 lt/min
- Maximum temperature 90°C
- Maximum operating pressure 350 PSI

Thread

- Built-in ½" BSP swivel inlet
- 12 mm (½") BSP female



Size		Part Number	Inlet Thread
mm	inch		
15	½	HDBWG050A	BSP
12	½	DWG050A	BSP



- Do not use these products with steam lines

Hose Glide Rings

Applications

- Glide rings are made from hard-bearing type plastic material. They come in two halves and can be fitted anywhere along the hose length. The hose glides easily across the floor without catching, protecting the hose outer cover. Glide rings hold hoses off the floor preventing damming, and build-up of wash-down liquids behind the hose. The hose can be dragged around the floor almost like being on skates.



Size (mm)	Part Numbers	Description
40	HGR-040	Black 2pce to suit 40mm ID hose
50	HGR-050	Yellow 2pce to suit 50mm ID hose
76	HGR-076	Yellow 2pce to suit 76mm ID hose
100	HGR-100	Yellow 2pce to suit 100mm ID hose

Australian Standard Hose Reels

Application

- The red hose reel is used for fire fighting purposes. The green hose reel is used for rainwater and washdown applications, while the lilac hose reel is specifically tailored for recycled water.

Specifications

- Test pressure 2,000kPa
- Working pressure 1,500kPa
- Nominal hose diameter 19mm
- Minimum discharge rate of 045 l/s at 220kPa



Fixed Type

Part Number	Description	Approved
FFS-HR-36B	19mm x 36m Fixed Fire Hose Reel - Red	✓
FFS-HR-36B-G	19mm x 36m Standard Fixed - Green	✓
FFS-HR-36B-L	19mm x 36m Standard Fixed - Lilac	✓



Stems and Ferrules

Recognising the importance of reliable connections in your winemaking process, our range of stems and ferrules includes sanitary King Crimp stems and ferrules, as well as Holedall King Crimp stems and ferrules. These high-quality components ensure secure, leak-free connections for all your liquid transfer needs, maintaining the integrity and efficiency of your operations.



Holedall™ BSM (RJT) External Crimp Stem

Standards

- RJT (BSM) AS 1528.2 - 2001: screwed couplings

Material

- 316 stainless steel



Female

Female

Size		Part Numbers
mm	inch	
25.4	1	HA0224
38.1	1½	HA0225
50.8	2	HA0226
63.5	2½	HA0227
76.2	3	HA0228
101.6	4	HA0294

All stems are manufactured to suit inch bore hoses (not metric hose bores)



Male

Male

Size		Part Numbers
mm	inch	
25.4	1	HA0219
38.1	1½	HA0220
50.8	2	HA0221
63.5	2½	HA0222
76.2	3	HA0223
101.6	4	HA0293

All stems are manufactured to suit inch bore hoses (not metric hose bores)

Holedall™ Clamp Type/External Crimp Stem

Material

- 316 stainless steel



Size		Part Numbers
mm	inch	Male
25.4	1	HA0640
38.1	1½	HA0641
50.8	2	HA0642
63.5	2½	HA0643
76.2	3	HA0644
101.6	4	HA0645

All stems are manufactured to suit inch bore hoses (not metric hose bores)

14-SHB-Series Sanitary Hose Bumper

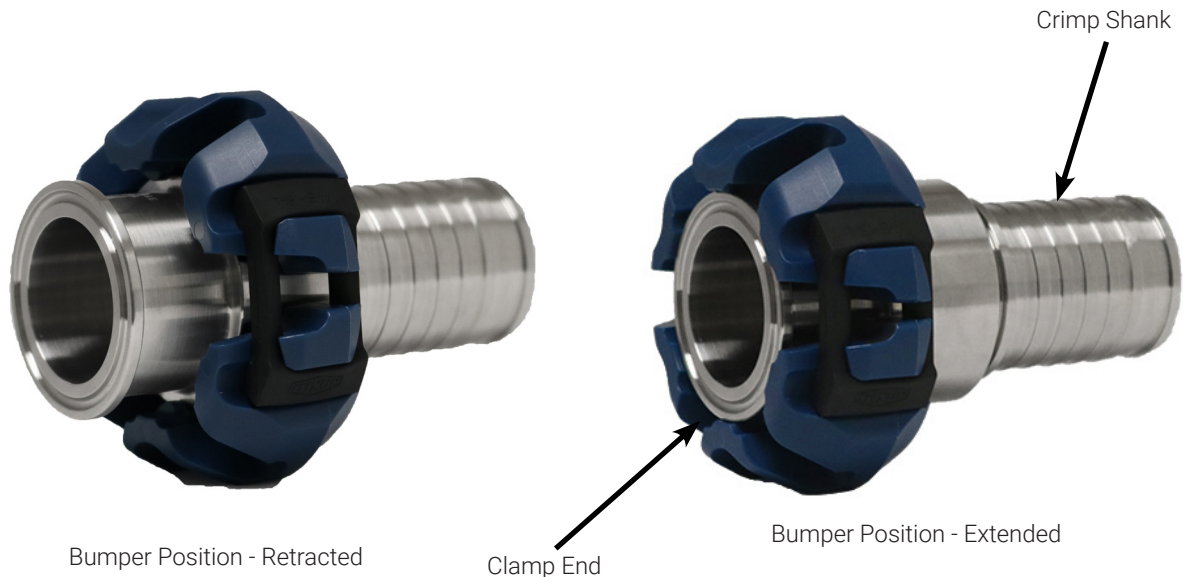
Dixon's 14-SHB-series hose bumper is an innovative departure from traditional rubber bumpers. It prevents forced detachment from the crimp stem even when dragged or dropped on the ground. The open design ensures easy access to clean all surfaces of the fitting while completely protecting the hose ferrule. Experience the convenience and assurance of this hose bumper — slide with ease, secure with confidence!

Application

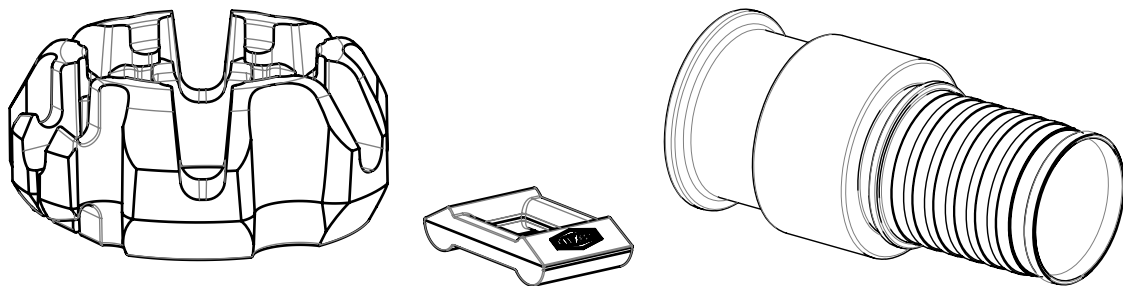
- Constructed of durable polypropylene, this sanitary hose bumper meets the FDA CFR 21 standard for use in the food, beverage, dairy, winery and brewery, cosmetic, and pharmaceutical markets.

Features

- No special tools or fasteners needed for installation
- Patent-pending two-position design provides complete protection to sanitary tri-clamp ferrule
- Cannot be forced off crimp stem like most traditional rubber bumpers when dragged on the ground
- The open design maintains clearance between the crimp stem and the bumper allowing for access to clean and drain all surfaces of the stainless steel fitting
- One bumper size works with any hose diameter within a given tri-clamp ferrule size
- The bumper and sanitary crimp stem were designed together as a system to ensure optimal performance
- Polypropylene bumper contains Sanafor PO-5 antimicrobial additive



14BA-Series Hose Bumper System



Size	Stem Material (Finish)	Stem Process Connection	Stem Shank Type	Bumper Color	Bumper Material	Bumper System Part #	Item(s) Included
1"	316L (32 Ra)	Clamp	3A 62-02 Conforming shank	Blue (standard)	Polypropylene (standard)	14BA-R10CX	(1) Hose bumper
1-1/2"						14BA-R15CX	(1) Latch
2"						14BA-R20CX	(1) Crimp stem
3"						14BA-R30CX	

NOTE: This bumper system is to be used with a crimp ferrule (not included). See chart below

Dixon™ Sanitary King Crimp™ Stems

Application

- Our Sanitary King Crimp Stems are meticulously designed for seamless use in food and beverage applications. The internal smooth bore ensures a hygienic environment, promoting the highest standards of cleanliness. These stems are lightweight yet robust, making them an excellent choice for various applications. Not only can they be used with Dixon's King Crimp™ ferrules, but they also integrate effortlessly with both PVC and rubber hoses.

Material

- 316 stainless steel

Clamp End x Hose Tail



Size		Part Numbers
mm	inch	
25.4	1	CSSR100CS
38.1	1½	CSSR150CS
50.8	2	CSSR200CS
76.2	3	CSSR300CS
101.6	4	CSSR400CS

RJT x Hose Tail



Size		Part Numbers
mm	inch	
25.4	1	HA0224-KC
38.1	1½	HA0225-KC
50.8	2	HA0226-KC
63.5	2½	HA0227-KC
76.2	3	HA0228-KC
101.6	4	HA0294-KC

NZ RJT x Hose Tail



Size		Part Numbers
mm	inch	
38.1	1½	HA0225-NZKC
50.8	2	HA0226-NZKC
63.5	2½	HA0227-NZKC
76.2	3	HA0228-NZKC
101.6	4	HA0294-NZKC

CIP Flat Face x Hose Tail



Size		Part Numbers
mm	inch	
25.4	1	HA0224-CIPKC
38.1	1½	HA0225-CIPKC
50.8	2	HA0226-CIPKC
63.5	2½	HA0227-CIPKC
76.2	3	HA0228-CIPKC
101.6	4	HA0294-CIPKC

All Dixon™ Sanitary King Crimp™ stems are used with King Crimp™ light weight ferrules and can also be used with standard ferrules and sleeves

Wine x Hose Tail

Size		Part Numbers
mm	inch	
50.8	2	HA0850-KC
76.2	3	HA0851-KC
101.6	4	HA0852-KC



Weld End x Hose Tail

Size		Part Numbers
mm	inch	
25.4	1	HA0833-KC
38.1	1½	HA0835-KC
50.8	2	HA0837-KC
63.5	2½	HA0839-KC
76.2	3	HA0841-KC
101.6	4	HA0843-KC



DIN 11851 x Hose Tail

Size		Part Numbers
mm	inch	
25.4	1	HA0239-KC
38.1	1½	HA0240-KC
50.8	2	HA0241-KC
63.5	2½	HA0242-KC
76.2	3	HA0243-KC
101.6	4	HA0234-KC



All Dixon™ Sanitary King Crimp™ stems are used with King Crimp™ light weight ferrules and can also be used with standard ferrules and sleeves

Light Weight External King Crimp™ Ferrules

Material

- 304 stainless steel

Size		Part Numbers	Hose OD (mm)	
mm	inch		from	to
25.4	1	CF100-038SS	36.0	39.1
25.4	1	CF100-043SS	38.0	43.5
38.1	1½	CF150-052SS	48.0	52.8
38.1	1½	CF150-056SS	52.0	56.4
50.8	2	CF200-064SS	61.0	67.0
50.8	2	CF200-069SS	64.0	71.4
63.5	2½	CF250-078SS	73.0	80.7
63.5	2½	CF250-081SS	78.0	83.5
76.2	3	CF300-091SS	86.0	93.6
76.2	3	CF300-096SS	91.0	98.0
101.6	4	CF400-119SS	114.0	121.1
101.6	4	CF400-124SS	119.0	125.5



Product Group: AV07

Wine Female Crimp Stem



Material

- 316 stainless steel

Size		Part Numbers
mm	inch	
50.8	2	HA0850
76.2	3	HA0851
101.6	4	HA0297

Product Group: AV07

Butt Weld Tube Crimp Stem



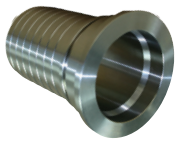
Material

- 316 stainless steel

Size		Part Numbers
mm	inch	
25.4	1	HA0833
38.1	1½	HA0835
50.8	2	HA0837
63.5	2½	HA0839
76.2	3	HA0841
101.6	4	HA0843

Product Group: AV07

BSM CIP Crimp Stem



Material

- 316 stainless steel

Size		Part Numbers
mm	inch	
25.4	1	HA0224-CIP
38.1	1½	HA0225-CIP
50.8	2	HA0226-CIP
63.5	2½	HA0227-CIP
76.2	3	HA0228-CIP
101.6	4	HA0229-CIP

Product Group: AV07

Inline Hose Strainer



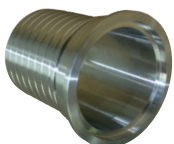
Material

- 316 stainless steel

Size		Part Number
mm	inch	
76.2	3	HS-R300

Product Group: AV07

NZ RJT Crimp Stem



Material

- 316 stainless steel

Size		Part Numbers
mm	inch	
38.1	1½	HA0225-NZ
50.8	2	HA0226-NZ
63.5	2½	HA0227-NZ
76.2	3	HA0228-NZ
101.6	4	HA0294-NZ

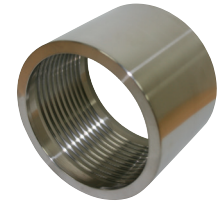
Product Group: AV07

Holedall™ External Crimp Ferrules

Material

- 304 stainless steel

Size		Part Numbers	Hose OD (mm)	
mm	inch		from	to
25.4	1	HA0249-41-3	33.0	35.0
25.4	1	HA0249-43-3	35.7	36.5
25.4	1	HA0249-45-3	36.9	37.7
25.4	1	HA0249-46-3	38.1	38.9
25.4	1	HA0249-47-3	39.3	40.1
25.4	1	HA0249-48-3	40.5	41.3
38.1	1½	HA0250-56-3	48.4	49.6
38.1	1½	HA0250-58-3	50.0	51.2
38.1	1½	HA0250-59-3	51.6	52.8
38.1	1½	HA0250-61-3	53.2	54.4
38.1	1½	HA0250-63-3	56.4	57.6
50.8	2	HA0251-70-3	62.7	63.9
50.8	2	HA0251-72-3	64.3	65.5
50.8	2	HA0251-74-3	65.9	67.1
50.8	2	HA0251-75-3	67.4	68.7
50.8	2	HA0251-76-3	71.4	73.6
63.5	2½	HA0252-84-3	76.1	78.1
63.5	2½	HA0252-86-3	78.1	80.1
63.5	2½	HA0252-89-3	81.1	83.1
76.2	3	HA0253-96-3	88.0	91.0
76.2	3	HA0253-98-3	91.7	92.9
76.2	3	HA0253-100-3	92.1	93.3
76.2	3	HA0253-101-3	93.6	94.9
76.2	3	HA0253-103-3	95.2	96.5
76.2	3	HA0253-105-3	96.8	98.0
76.2	3	HA0253-106-3	98.4	99.6
76.2	3	HA0253-107-3	100.4	101.6
101.6	4	HA0301-129-3	117.5	118.7
101.6	4	HA0301-130-3	119.0	120.3
101.6	4	HA0301-132-3	120.6	121.9
101.6	4	HA0301-133-3	122.2	123.5
101.6	4	HA0301-135-3	123.8	125.0
101.6	4	HA0301-136-3	128.9	130.18



Product Group: AV07





Clamps

Offering a comprehensive range of clamps to meet your winery's needs, our selection includes worm gear clamps, super clamps, pre-formed clamps, and band clamps. These high-quality clamps ensure secure, reliable connections for all your hoses and fittings, maintaining the efficiency and safety of your winemaking process.



Dixon™ Worm Gear Clamps

Application

- Worm gear hose clamps are highly versatile due to their easy and precise adjustability. Their ability to accommodate a wide range of hose or tube diameters makes them suitable for various applications.

Features

- Clamp meets SAE J1508 which supersedes mil-spec WW-C-440B
- Four-piece construction
- Screw design 8mm (5/16") slotted hex head
- Maximum recommended torque 45 in. lbs.

Materials

Style HS

- Band and housing - SAE 300 series stainless steel
- Screw - SAE 1018 case-hardened, hex-free chrome zinc-plated steel

Style HSS

- Band and housing - SAE 300 series stainless steel
- Screw - SAE 300 series stainless steel

Band Width - 12.7mm (1/2")



Hose OD Range (mm)		Part Numbers		Box Quantity
from	to	HS Clamps	HSS Clamps	
11	20	HS6	HSS6	10
12	23	HS8	HSS8	10
14	27	HS10	HSS10	10
17	32	HS12	HSS12	10
21	38	HS16	HSS16	10
21	45	HS20	HSS20	10
27	51	HS24	HSS24	10
33	57	HS28	HSS28	10
40	64	HS32	HSS32	10
46	70	HS36	HSS36	10
52	76	HS40	HSS40	10
59	83	HS44	HSS44	10
65	90	HS48	HSS48	10
71	95	HS52	HSS52	10
78	102	HS56	HSS56	10
84	108	HS60	HSS60	10

Band Width - 14.3mm (9/16")

Hose OD Range (mm)		Part Numbers		Box Quantity
from	to	HS Clamps	HSS Clamps	
91	114	HS64	HSS64	10
48	127	HS72	HS72	10
64	140	HS80	HSS80	10
79	152	HS88	HSS88	10
92	165	HS96	HSS96	10
105	178	HS104	HSS104	10
143	216	HS128	HSS128	10
181	254	HS152	HSS152	10
238	311	HS188	HSS188	10
257	330	HS200	HSS200	10
276	350	HS212	HSS212	10
295	368	HS224	HSS224	10
315	387	HS236	HSS236	10
334	406	HS248	HSS248	10
435	508	HS312	HSS312	10



- Torque ratings given on this page correspond to the torque rating of the screw of the clamp, and are not an indication of the working pressure of any hose assembly installed with this clamp

Dixon™ Miniature Worm Gear Clamps

Features

- Clamp meets SAE J1508 which supersedes mil-spec WW-C-440B
- Screw design 8mm (5/16") slotted hex head
- Maximum recommended torque 15 in. lbs.
- Sold in box quantities of 10 clamps

Materials

Style MH

- Band and housing - SAE 300 series stainless steel
- Screw - SAE 1018 case-hardened, hex-free chrome zinc-plated steel

Style MAH

- Band and housing - SAE 300 series stainless steel
- Screw - SAE 300 series stainless steel

Hose OD Range (mm)		Part Numbers		Box Quantity
from	to	Zinc Plated	Stainless Steel	
5.6	16	MH4	MAH4	10
11	20	MH6	MAH6	10
13	23	MH8	MAH8	10
14.3	27	MH10	MAH10	10
17	27	MH12	MAH12	10
24	28	MH16	MAH16	10
30	45	MH20	MAH20	10



Dixon™ HTML Hi Torque Worm Gear Clamps

Features

- Withstands more than three times the SAE torque requirements for worm-driven clamps
- Eight screw threads are engaged in the band simultaneously for incredible torquing drive (over 90 in. lbs.), sealing pressure and vibration resistance
- Slotted hex head screw design

Materials

- Band and housing - 300 series half hard stainless steel
- Screw - 410 series stainless steel

Hose OD Range (mm)		Part Numbers	Box Quantity
from	to		
32	54	HTM200L	10
45	67	HTM250L	10
57	79	HTM300L	10
70	92	HTM350L	10
95	118	HTM450L	10



Quick Release Worm Gear Clamps

Features

- Suggested installation torque 25-35 in lbs.
- Maximum torque 50 in. lbs.
- Screw design 8mm (5/16") slotted hex head

Materials

- Band and housing - 301 series stainless steel
- Screw - SAE 410 series stainless steel

Hose OD Range (mm)		Part Numbers	Box Quantity
from	to		
51	127	LSS72	1
52	152	LSS88	1
45	178	LSS104	1
45	218	LSS128	1
52	313	LSS188	1
259	355	LSS216	1
45	406	LSS248	1

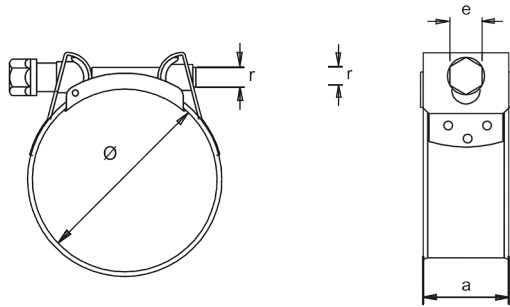


Product Group: A001



- Torque ratings given on this page correspond to the torque rating of the screw of the clamp, and are not an indication of the working pressure of any hose assembly installed with this clamp

T-Bolt Super Clamps - W4



Features

- Complies with the RoHS directive EU 20032/95/EC 2006
- Swiveling bridge
- Can be opened up and fastened again when in place without dislodging other parts of the clamp
- Bevelled edges to protect the hose from damage

Materials

- Band and bridge - 304 series stainless steel
- Bolt - 302 stainless steel



Hose OD Range		Part Numbers	Dimensions (mm)			Bolt Torque (Nm)	Box Quantity
from	to		r	e	a		
17	19	SS019	M6	8	18	10	50
19	21	SS021	M6	8	18	10	50
21	23	SS023	M6	8	18	10	50
23	25	SS025	M6	8	18	10	50
23	27	SS027	M6	8	18	10	50
27	29	SS029	M7	11	20	10	50
29	31	SS031	M7	11	20	12	50
31	34	SS034	M7	11	20	12	50
34	37	SS037	M7	11	20	12	50
37	40	SS040	M7	11	20	12	50
40	43	SS043	M7	11	20	12	50
43	47	SS047	M7	11	20	12	50
47	51	SS051	M7	11	20	16	50
51	55	SS055	M7	11	20	16	25
55	59	SS059	M7	11	20	16	25
59	63	SS063	M7	11	20	16	25
63	68	SS068	M7	11	20	16	25
68	73	SS073	M8	13	25	30	25
73	79	SS079	M8	13	25	30	25
79	85	SS085	M8	13	25	30	25
85	91	SS091	M8	13	25	30	25
91	97	SS097	M8	13	25	30	25
97	104	SS104	M8	13	25	30	25
104	112	SS112	M8	13	25	30	25
112	121	SS121	M8	13	25	30	25
121	130	SS130	M8	13	25	30	25
130	140	SS140	M10	15	28	45	10
140	150	SS150	M10	15	28	45	10
150	162	SS162	M10	15	28	45	10
162	174	SS174	M10	15	28	45	10
174	187	SS187	M10	15	28	45	10
187	200	SS200	M10	15	28	45	10
200	213	SS213	M10	15	28	45	10
213	226	SS226	M10	15	28	45	10
226	239	SS239	M10	15	28	45	10
239	252	SS252	M10	15	28	45	10

Product Group: A010

T-Bolt Super Clamps - W1

Application

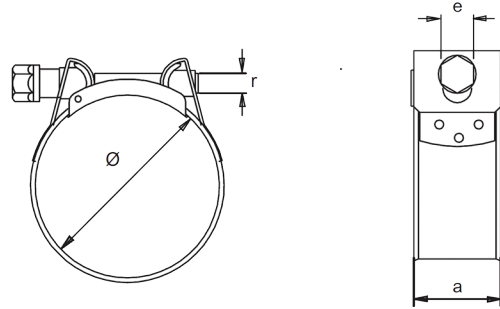
- A heavy-duty hose clamp that can be tightened up, using a variety of different tools.

Features

- Swiveling bridge
- Can be opened up and fastened again when in place without dislodging other parts of the clamp
- Bevelled edges to protect the hose from damage

Materials

- Bolt: 8.8 grade steel
- Zinc plated



Hose OD Range		Part Numbers	Dimensions (mm)			Bolt Torque (Nm)	Box Quantity
from	to		r	e	a		
17	19	SW1-17	M5	8	18	4.5	50
20	22	SW1-19	M5	8	18	4.5	50
23	25	SW1-23	M5	8	18	4.5	50
26	28	SW1-25	M5	8	18	4.5	50
29	31	SW1-29	M6	10	20	8	50
32	35	SW1-31	M6	10	20	8	50
36	39	SW1-37	M6	10	20	8	50
40	43	SW1-40	M6	10	20	8	50
44	47	SW1-43	M7	11	22	16	50
48	51	SW1-47	M7	11	22	16	50
52	55	SW1-51	M7	11	22	16	25
56	59	SW1-55	M7	11	22	16	25
60	63	SW1-59	M7	11	22	16	25
64	67	SW1-63	M7	11	22	16	25
68	73	SW1-68	M8	13	24	25	25
74	79	SW1-73	M8	13	24	25	25
80	85	SW1-79	M8	13	24	25	25
86	91	SW1-85	M8	13	24	25	25
92	97	SW1-91	M8	13	24	25	25
98	103	SW1-97	M8	13	24	25	25
104	112	SW1-104	M8	13	24	25	25
113	121	SW1-112	M8	13	24	25	25
122	130	SW1-121	M8	13	24	25	25
131	139	SW1-130	M10	17	26	50	10
140	148	SW1-140	M10	17	26	50	10
149	161	SW1-150	M10	17	26	50	10
162	174	SW1-162	M10	17	26	50	10
175	187	SW1-174	M10	17	26	50	10
188	200	SW1-187	M10	17	26	50	10
201	213	SW1-200	M10	17	26	50	10
214	226	SW1-213	M10	17	26	50	10
227	239	SW1-226	M10	17	26	50	10
240	252	SW1-239	M10	17	26	50	10



Product Group: A010



Universal Preformed Band Style Clamps

Features

- Install with centre punched or rolled-over tools
- Fast-Lok tools F1, F40 and F100
- Super strap tools 51960 screw action with 51970 adapter
- Punch-Lok tools P-1000 or P-38 for 3/8" and 5/8", P-3000 for 3/4"

Materials

- Band: 300 series stainless steel
- Buckles: 201 series stainless steel



Clamp ID		Part Numbers	Band Width (mm)	Box Quantity
mm	inch			
20	13/16	KS3M	10	100
35	1 3/8	KS311M	10	100
25	1	KS4M	16	100
32	1 1/4	KS5M	16	100
38	1 1/2	KS6M	16	100
45	1 3/4	KS7M	16	100
50	2	KS8M	16	100
56	2 1/4	KS9M	16	100
65	2 1/2	KS10M	16	50
70	2 3/4	KS11M	16	50
76	3	KS12M	16	50
92	3 1/2	KS14M	16	50
100	4	KS16M	16	25
112	4 1/2	KS18M	16	25
125	5	KS20M	16	25
150	6	KS24M	16	25
175	7	KS28M	16	25
200	8	KS32M	16	25

Ultra-Lok® Band Style Clamping Systems

Features

- Ultra-Lok® provides a fast, reliable, consistent clamp made from 20mm (3/4"), 6mm (1/4") hard, high tensile 201 stainless steel for unequalled strength and reliability
- The battery-operated UL4000-DUK tool allows you to apply clamps anywhere
- Smooth ID seals tight with a gap-free, 360° seal
- The design allows locking under full tension, clamps resist rotation on pole applications

- Sizes range from 50mm (2") to 225mm (9") diameter
- Speed/torque setting on tool for consistent repeatable tensioning

Materials

- Ban: 300 series stainless steel
- Buckles: 302 series stainless steel



Clamp ID		Part Numbers	Box Quantity
mm	inch		
50	2	UL227	100
70	2 3/4	UL210	50
80	3	UL211	50
92	3 1/2	UL212	50
100	4	UL213	25
112	4 1/2	UL214	25
125	5	UL215	25
162	6 1/2	UL217	25
175	7	UL218	25
200	8	UL219	25
225	9	UL228	10

Band Clamp Hand Tools

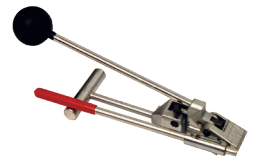
Part Number	Description
F100	Hand held tool for application of 3/8" & 5/8" band clamps



Part Number	Description
F229	3/8" Clamp adaptor for F100 tool only



Part Number	Description
C2	Clamping tool for band & buckles - lightweight with side-entry



Part Number	Description
F1	Hand tool for application of 5/8" band clamps



Part Number	Description
51960	Clamping tool for band & buckles - for vice application only



Part Number	Description
51970	Adaptor for installing preformed clamps for part number 51960







Fittings

Providing an extensive selection of fittings to support your winery operations, our range includes BSM Union (RJT) Fittings, NZ RJT Fittings, Wine Fittings, Butt Weld Fittings, and gaskets. Designed for durability and reliability, these fittings ensure secure connections maintaining the highest standards of efficiency and safety.

BSM Union (RJT) Fittings

Application

- Australia commonly employs unions featuring a captive seal design for a seamless, crevice-free internal bore. These hygienic unions play a crucial role in the food and beverage industry, facilitating the connection of tubes, valves, pumps, tanks, or hoses. Distinguished by a distinct liner and a genuine O-ring in contrast to the New Zealand version, they offer versatility with various elastomer O-rings tailored to specific applications. Users can choose between two types of nuts: slotted and hexed.

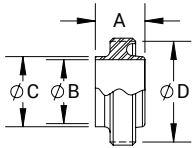
RJT Welding Male

Standard

- RJT (BSM) AS1528.2 - 2001 screwed couplings

Material

- 316 stainless steel



Size		Part Numbers	A (mm)	B (mm)	C (mm)	D (mm)
mm	inch					
25.4	1	15A-R100RJT	27.0	22.1	25.65	45.7 x 8T
38.1	1½	15A-R150RJT	27.0	34.8	38.35	58.4 x 8T
50.8	2	15A-R200RJT	27.0	47.5	50.8	72.7 x 6T
63.5	2½	15A-R250RJT	27.0	60.2	63.75	85.4 x 6T
76.2	3	15A-R300RJT	27.0	72.9	76.2	98.1 x 6T
101.6	4	15A-R400RJT	27.0	97.4	101.85	123.5 x 6T

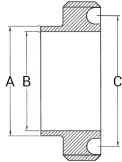
Welding Male CIP Flat Face

Standard

- Flat face couplings AS1528.2 - 2001 screwed couplings

Material

- 316 stainless steel



Size		Part Numbers	A (mm)	B (mm)	C (mm)
mm	inch				
25.4	1	15A-R100RJT-CIP	22.0	22.2	25.4
38.1	1½	15A-R150RJT-CIP	22.0	34.9	38.1
50.8	2	15A-R200RJT-CIP	22.0	47.6	50.8
63.5	2½	15A-R250RJT-CIP	22.0	60.3	63.5
76.2	3	15A-R300RJT-CIP	22.0	73.0	76.2
101.6	4	15A-R400RJT-CIP	22.0	98.4	101.6

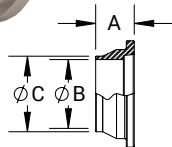
RJT Welding Liner

Standard

- RJT (BSM) AS1528.2 - 2001 screwed couplings

Material

- 316 stainless steel



Size		Part Numbers	A (mm)	B (mm)	C (mm)
mm	inch				
25.4	1	14A-R100RJT	19.5	22.1	25.65
38.1	1½	14A-R150RJT	19.5	34.8	38.35
50.8	2	14A-R200RJT	19.5	47.5	50.8
63.5	2½	14A-R250RJT	19.5	60.2	63.75
76.2	3	14A-R300RJT	19.5	72.9	76.2
101.6	4	14A-R400RJT	19.5	97.4	101.85

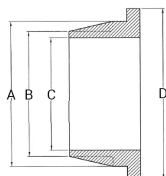
Welding Liner CIP Flat Face

Standard

- Flat face couplings AS1528.2 - 2001 screwed couplings

Material

- 316 stainless steel



Size		Part Numbers	A (mm)	B (mm)	C (mm)	D (mm)
mm	inch					
25.4	1	14A-R100RJT-CIP	32.6	25.4	22.2	41.3
38.1	1½	14A-R150RJT-CIP	45.3	38.1	34.9	54.0
50.8	2	14A-R200RJT-CIP	58.0	50.8	47.6	66.7
63.5	2½	14A-R250RJT-CIP	70.7	63.5	60.3	79.4
76.2	3	14A-R300RJT-CIP	83.4	76.2	73.0	92.1
101.6	4	14A-R400RJT-CIP	108.8	101.6	98.4	117.5

BSM Union (RJT) Fittings

RJT Round Slotted Nut

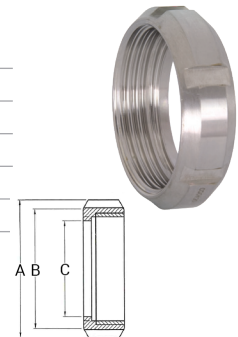
Standard

- RJT (BSM) AS1528.2 - 2001 screwed couplings

Material

- 304 stainless steel

Size		Part Numbers	A (mm)	B (mm)	C (mm)
mm	inch				
25.4	1	13R-G100RJT	58.5	49.3	33.3
38.1	1½	13R-G150RJT	74.0	63.5	46.0
50.8	2	13R-G200RJT	85.5	77.5	58.7
63.5	2½	13R-G250RJT	98.5	90.5	71.4
76.2	3	13R-G300RJT	111.6	102.0	84.1
101.6	4	13R-G400RJT	138.0	129.0	109.5



RJT Hex Nut

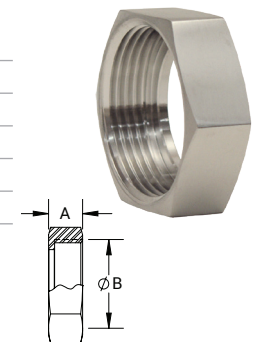
Standard

- RJT (BSM) AS1528.2 - 2001 screwed couplings

Material

- 304 stainless steel

Size		Part Numbers	A (mm)	B (mm)
mm	inch			
25.4	1	13H-G100RJT	22.2	42.3 x 8TPI WHIT
38.1	1½	13H-G150RJT	22.2	55.0 x 8TPI WHIT
50.8	2	13H-G200RJT	22.2	67.9 x 6TPI WHIT
63.5	2½	13H-G250RJT	22.2	80.6 x 6TPI WHIT
76.2	3	13H-G300RJT	22.2	93.3 x 6TPI WHIT
101.6	4	13H-G400RJT	22.2	118.7 x 6TPI WHIT



RJT Round Blank Cap

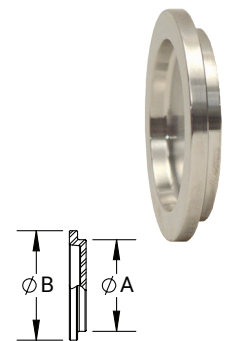
Standard

- RJT (BSM) AS1528.2 - 2001 screwed couplings

Material

- 304 stainless steel

Size		Part Numbers	A (mm)	B (mm)
mm	inch			
25.4	1	13RBN-G100RJT	32.5	41.3
38.1	1½	13RBN-G150RJT	45.2	54.0
50.8	2	13RBN-G200RJT	57.9	66.7
63.5	2½	13RBN-G250RJT	70.6	79.4
76.2	3	13RBN-G300RJT	83.3	92.1
101.6	4	13RBN-G400RJT	108.7	117.5



RJT Hex Blank

Material

- 316 stainless steel

Size		Part Numbers
mm	inch	
25.4	1	13HBN-G100RJT
38.1	1½	13HBN-G150RJT
50.8	2	13HBN-G200RJT
63.5	2½	13HBN-G250RJT
76.2	3	13HBN-G300RJT
101.6	4	13HBN-G400RJT



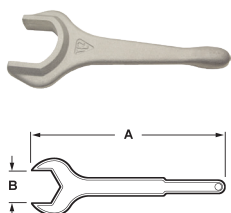
RJT Hex Spanner

Standard

- Single-sided - 25H

Material

- Aluminium



Size		Part Numbers	A (mm)	B (mm)
mm	inch			
25.4	1	RJT-100SP	254.00	50.80
38.1	1½	RJT-150SP	292.10	65.02
50.8	2	RJT-200SP	304.80	79.25
63.5	2½	RJT-300SP	342.80	91.95
76.2	3	RJT-400SP	368.30	104.65
101.6	4	RJT-500SP	444.50	130.05

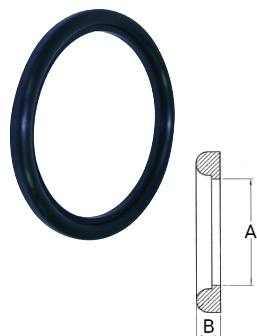
BSM (RJT) O-Rings

Standard



Size		Part Numbers			ID (mm)	Width (mm)
mm	inch	Buna - NBR	EPDM	FKM		
25.4	1	40MP-U100RJT	40MP-E100RJT	40MP-SFY100RJT	26.92	6.35
38.1	1½	40MP-U150RJT	40MP-E150RJT	40MP-SFY150RJT	39.62	6.35
50.8	2	40MP-U200RJT	40MP-E200RJT	40MP-SFY200RJT	52.32	6.35
63.5	2½	40MP-U250RJT	40MP-E250RJT	40MP-SFY250RJT	65.08	6.35
76.2	3	40MP-U300RJT	40MP-E300RJT	40MP-SFY300RJT	77.72	6.35
101.6	4	40MP-U400RJT	40MP-E400RJT	40MP-SFY400RJT	103.12	6.35

CIP



Size		Part Numbers		A (mm)	B (mm)
mm	inch	Buna - NBR	EPDM		
25.4	1	40MP-U100RJT-CIP	40MP-E100RJT-CIP	22.2	7.0
38.1	1½	40MP-U150RJT-CIP	40MP-E150RJT-CIP	34.9	7.0
50.8	2	40MP-U200RJT-CIP	40MP-E200RJT-CIP	47.6	7.0
63.5	2½	40MP-U250RJT-CIP	40MP-E250RJT-CIP	60.3	7.0
76.2	3	40MP-U300RJT-CIP	40MP-E300RJT-CIP	72.9	7.0
101.6	4	40MP-U400RJT-CIP	40MP-E400RJT-CIP	98.4	7.0
152.4	6	-	40MP-E600RJT-CIP	149.2	7.0

Double Rolled Hose Tail

Material

- 304 stainless steel



Size		Part Numbers
mm	inch	
25.4	1	HTWE-100
38.1	1½	HTWE-150
50.8	2	HTWE-200
63.5	2½	HTWE-250
76.2	3	HTWE-300
101.6	4	HTWE-400

NZ RJT Fittings

Application

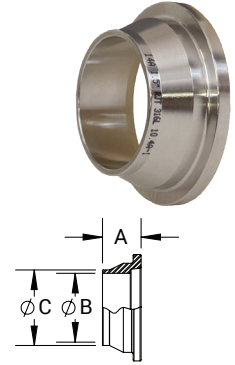
- Used in the food and beverage industry, hygienic unions are used to connect tubes, valves, pumps, tanks, or hoses. A captive seal design is used to provide a smooth, crevice-free internal bore. The NZ RJT uses a slightly different liner and o-ring/gasket, but the nuts and males can be interchanged with the Australian and British versions. The nuts are available either hex or round (slotted). Different elastomer o-rings are available depending on the application.

RJT Welding Liner

Material

- 316 stainless steel AS1528.2

Size		Part Numbers	A (mm)	B (mm)	C (mm)
mm	inch				
25.4	1	14A-R100RJT-NZ	22.2	25.6	19.5
38.1	1½	14A-R150RJT-NZ	34.8	38.1	19.5
50.8	2	14A-R200RJT-NZ	47.5	50.8	19.5
63.5	2½	14A-R250RJT-NZ	60.2	63.5	19.5
76.2	3	14A-R300RJT-NZ	72.9	76.2	19.5
101.6	4	14A-R400RJT-NZ	97.6	101.8	19.5
152.4	6	14A-R600RJT-NZ	147.7	152.4	23

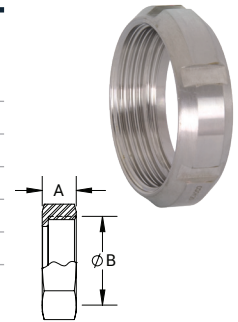


RJT Round Slotted Nut

Material

- 304 stainless steel

Size		Part Numbers	A (mm)	B (mm)
mm	inch			
25.4	1	13R-G100RJT	22.2	58.5
38.1	1½	13R-G150RJT	22.2	74
50.8	2	13R-G200RJT	22.2	85.5
63.5	2½	13R-G250RJT	22.2	98.5
76.2	3	13R-G300RJT	22.2	111.6
101.6	4	13R-G400RJT	22.2	138

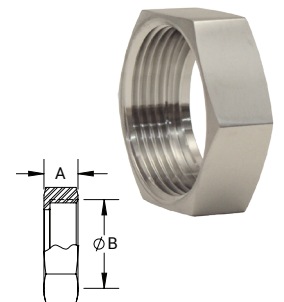


RJT Hex Nut

Material

- 304 stainless steel

Size		Part Numbers	A (mm)	B (mm)
mm	inch			
25.4	1	13H-G100RJT	22.2	42.3 x 8TPI WHIT
38.1	1½	13H-G150RJT	22.2	55.0 x 8TPI WHIT
50.8	2	13H-G200RJT	22.2	67.9 x 6TPI WHIT
63.5	2½	13H-G250RJT	22.2	80.6 x 6TPI WHIT
76.2	3	13H-G300RJT	22.2	93.3 x 6TPI WHIT
101.6	4	13H-G400RJT	22.2	118.7 x 6TPI WHIT



O-Ring

Size		Part Numbers		ID (mm)	Width (mm)
mm	inch	FKM	EPDM		
25.4	1	40MP-SFY100RJT-NZ	40MP-E100RJT-NZ	33.3	12.5
38.1	1½	40MP-SFY150RJT-NZ	40MP-E150RJT-NZ	46	12.5
50.8	2	40MP-SFY200RJT-NZ	40MP-E200RJT-NZ	58.7	12.5
63.5	2½	40MP-SFY250RJT-NZ	40MP-E250RJT-NZ	71.4	12.5
76.2	3	40MP-SFY300RJT-NZ	40MP-E300RJT-NZ	84.1	12.5
101.6	4	40MP-SFY400RJT-NZ	40MP-E400RJT-NZ	109.5	12.5
152.4	6	40MP-SFY600RJT-NZ	40MP-E600RJT-NZ	160.3	13.5



Wine Fittings

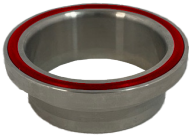
Application

- Introducing a new wine fitting design that prioritises hygiene and efficiency. This retrofit design seamlessly integrates with your existing fittings by aligning threads, eliminating the need for costly replacements. Featuring an O-ring for a reliable seal under pressure, it is securely retained and prevents loss without the use of a tool. The internal boasts a hygienic smooth edge design, and fittings from 1.5" to 4" require no extra machining due to a 1.6mm wall thickness. The redesigned tri-nut enhances practicality, making manoeuvring hose assemblies around your winery effortless.

Wine Weld Male

Material

- 316 stainless steel



Size		Part Numbers
mm	inch	
25.4	1	15A-R150WM
38.1	1½	15A-R200WM
50.8	2	15A-R250WM
63.5	2½	15A-R300WM
76.2	3	15A-R400WM
101.6	4	15A-R400WM

Wine Weld Liner

Material

- 316 stainless steel



Size		Part Numbers
mm	inch	
25.4	1	14A-R150WL
38.1	1½	14A-R200WL
50.8	2	14A-R250WL
63.5	2½	14A-R300WL
76.2	3	14A-R400WL
101.6	4	14A-R400WL

Wine Weld Nut

Material

- Brass



Size		Part Numbers
mm	inch	
25.4	1	13W-B150WN
38.1	1½	13W-B200WN
50.8	2	13W-B250WN
63.5	2½	13W-B300WN
76.2	3	13W-B400WN
101.6	4	13W-B400WN

Wine O-ring

Material

- Silicone



Size		Part Numbers
mm	inch	
38.1	1½	40MP-S150R
50.8	2	40MP-S200R
63.5	2½	40MP-S250R
76.2	3	40MP-S300R
101.6	4	40MP-S400R

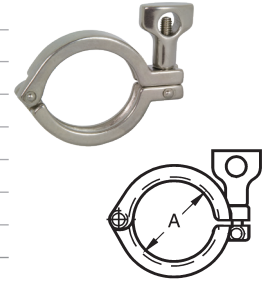
Stainless Steel Sanitary Clamps

Application

- Due to their hygienic design and simplicity of assembly and disassembly, stainless steel sanitary clamps are frequently used in the brewing and winemaking sectors as well as in the general food and beverage business. These clamps are often constructed from stainless steel, either 304 or 316, making them sturdy and corrosion-resistant. They are made to firmly join two pieces of piping or tubing, preventing leaks and product contamination throughout the transfer process. The clamps' smooth surface is crucial for upholding the hygienic standards necessary for the processing of food and beverages. This makes them simple to clean and sterilise, which is crucial in fields where cleanliness is of utmost importance.

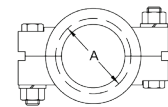
Single Pin Heavy-duty Clamps

Size		Part Numbers	Service Pressure Rating @ 21 (PSI)	Dimension A (mm)
mm	inch			
12.7 - 19.05	½ - ¾	13MHHM50-75	1500	1.062
25.4 - 38.1	1 - 1½	13MHHM100150	500	2.122
50.8	2	13MHHM200	450	2.654
63.5	2½	13MHHM250	400	3.185
76.2	3	13MHHM300	350	3.717
101.6	4	13MHHM400	300	4.820
152.4	6	13MHHM600	150	6.625
203.2	8	13MHHM800	100	8.695



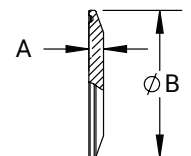
Bolted Clamps

Size		Part Numbers	Service Pressure Rating @ 21°C (PSI)	Service Pressure Rating @ 121 (PSI)	Dimension A (mm)
mm	inch				
12.7 - 19.05	½ - ¾	13MHP75	1500	1200	1.062
25.4 - 38.1	1 - 1½	13MHP100-150	1500	1200	2.046
50.8	2	13MHP200	1000	800	2.578
63.5	2½	13MHP250	1000	800	3.110
76.2	3	13MHP300	1000	800	3.640
101.6	4	13MHP400	800	600	4.744
152.4	6	13MHP600	300	200	6.632
203.2	8	13MHP800	250	150	8.638
254	10	13MHP1000	200	125	10.740
304.8	12	13MHP1200	150	100	12.740

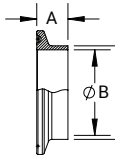


Stainless Steel Sanitary Clamp Solid End Caps

Size		Part Numbers		A (mm)	B (mm)
mm	inch	SS316	SS304		
12.7 - 19.05	½ - ¾	16AMP-R50-75	16AMP-G50-75	6.35	25.15
25.4 - 38.1	1 - 1½	16AMP-R100-150	16AMP-G100-150	6.35	50.29
50.8	2	16AMP-R200	16AMP-G200	6.35	64.00
63.5	2½	16AMP-R250	16AMP-G250	6.35	77.47
76.2	3	16AMP-R300	16AMP-G300	6.35	90.93
101.6	4	16AMP-R400	16AMP-G400	7.87	118.87
152.4	6	16AMP-R600	16AMP-G600	11.17	166.62
203.2	8	16AMP-R800	16AMP-G800	11.17	218.44
254	10	16AMP-R1000	16AMP-G1000	11.17	268.48
304.8	12	16AMP-R1200	16AMP-G1200	11.17	319.28

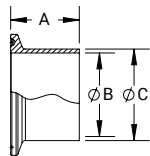
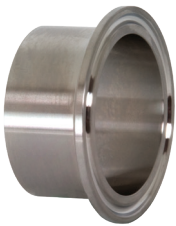


Sanitary Clamp Short Welding Ferrules



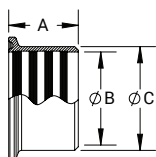
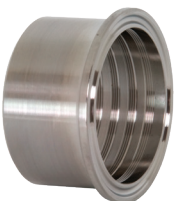
Size		Part Numbers		A (mm)	B (mm)	D (mm)
mm	inch	SS316	SS304			
12.7	½	14WMP-R50	14WMP-G50	12.70	9.40	12.70
19.05	¾	14WMP-R75	14WMP-G75	12.70	15.75	19.05
25.4	1	14WMP-R100	14WMP-G100	12.70	22.10	25.40
38.1	1½	14WMP-R150	14WMP-G150	12.70	34.80	38.10
50.8	2	14WMP-R200	14WMP-G200	12.70	47.50	50.80
63.5	2½	14WMP-R250	14WMP-G250	12.70	60.20	63.50
76.2	3	14WMP-R300	14WMP-G300	12.70	72.90	76.20
101.6	4	14WMP-R400	14WMP-G400	15.75	97.28	101.6
152.4	6	14WMP-R600	14WMP-G600	19.05	146.81	152.4
203.2	8	14WMP-R800	14WMP-G800	22.35	197.61	203.2
254	10	14WMP-R1000	14WMP-G1000	22.35	247.90	254.0
304.8	12	14WMP-R1200	14WMP-G1200	22.35	298.70	304.8

Sanitary Clamp Butt Welding Ferrules



Size		Part Numbers		A (mm)	B (mm)	D (mm)
mm	inch	SS316	SS304			
12.7	½	L14AM7-R50	L14AM7-G50	28.70	9.40	12.70
19.05	¾	L14AM7-R75	L14AM7-G75	28.70	15.75	19.05
25.4	1	L14AM7-R100	L14AM7-G100	28.70	22.10	25.40
38.1	1½	L14AM7-R150	L14AM7-G150	28.70	34.80	38.10
50.8	2	L14AM7-R100	L14AM7-G100	28.70	47.50	50.80
63.5	2½	L14AM7-R200	L14AM7-G200	28.70	60.20	63.50
76.2	3	L14AM7-R250	L14AM7-G250	28.70	72.90	76.20
101.6	4	L14AM7-R400	L14AM7-G400	28.70	97.28	101.6
152.4	6	L14AM7-R600	L14AM7-G600	38.10	146.81	152.4
203.2	8	L14AM7-R800	L14AM7-G800	38.10	197.61	203.2
254	10	L14AM7-R1000	L14AM7-G1000	44.45	247.90	254.0
304.8	12	L14AM7-R1200	L14AM7-G1200	44.45	298.70	304.8

Sanitary Clamp Roll-On Ferrules



Size		Part Numbers		A (mm)	B (mm)	D (mm)
mm	inch	SS316	SS304			
25.4	1	14RMP-R100	14RMP-G100	.75	1.01	1.16
38.1	1½	14RMP-R150	14RMP-G150	1.13	1.51	1.68
50.8	2	14RMP-R200	14RMP-G200	1.31	2.01	2.19
63.5	2½	14RMP-R250	14RMP-G250	1.38	2.51	2.71
76.2	3	14RMP-R300	14RMP-G300	1.44	3.01	3.22
101.6	4	14RMP-R400	14RMP-G400	1.50	4.01	4.26

Sanitary Gaskets

Application

All elastomeric gaskets require periodic replacement. Gasket life is influenced by the gasket material, product application, temperature, cleaning procedures, etc. After monitoring gasket conditions in a process system, a schedule should be developed for the replacement of gaskets.

Materials

- Nitrile (Buna N)
- Silicone (Peroxide cured)
- EPDM
- FKM
- PTFE

Approvals

- US Pharmacopoeia Class VI Cytotoxicity Criteria
- Title 21CFR177.2600 and .1550
- USDA and 3A Sanitary Standards



Colour Coding - Identification of Gasket Materials

Elastomer	Part Number Identifier	Colour Code	Temperature (celsius)
Buna-N	U	1 Red dot	-32°C to 93°C
White Buna-N	UW	1 Red dot	-32°C to 93°C
EPDM Peroxide Cured	E	3 Green dots	-34°C to 149°C
FKM	SFY	1 White dot & 1 yellow dot	-34°C to 204°C
Silicone Peroxide Cured	XW	1 Pink dot	-40°C to 232°C
Silicone Platinum Cured	XCPL	None	-40°C to 232°C
PTFE	G	None	-73°C to 260°C
Metal Detectable PTFE	GTS	None	-195°C to 288°C
Metal Detectable Buna	UZ	1 Blue dots & 1 red dot	-34°C to 93°C
Metal Detectable EPDM	EZ	2 Blue dots & 3 green dots	-34°C to 149°C
Metal Detectable FKM	SFYZ	2 Blue dots	-34°C to 204°C

Packaging and Storing Information

The shelf life of rubber gaskets is the maximum period from the cure date to the date the product is installed. During the shelf lifetime, the rubber product is expected to retain its characteristics under the following conditions:

- Stored in the original packaging in a clean, dry warehouse
- Not exposed to direct sunlight
- Stored no closer than 6 feet from electric motors
- Temperature between 18°C to 29°C (65°F to 85°F)

A guideline for the shelf life of rubber gaskets manufactured from the following components should have the following shelf life not to exceed:

- Buna - 10 years
- EPDM - 10 years
- FKM - 10 years
- Silicone - 5 years
- PTFE - 20 years
- Buna, EPDM and Silicone Metal Detectable Gaskets - 10 years

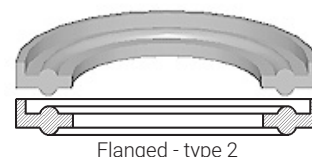
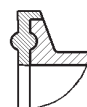
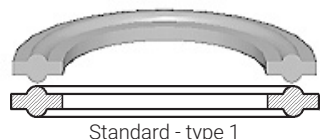
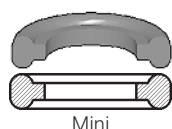
Gaskets for Clamp Style Sanitary Fittings

Specifications

- PSI service ratings for the sanitary clamps don't apply to connections (1" and above) using any PTFE gaskets, due to the potential for cold flow under normal operating conditions. PTFE gaskets, when used with any clamp, are likely to leak at pressures far below the published service ratings. This restriction does not apply to the fractionally sized 1/2" and 3/4" connections, due to their recessed, fully contained design

Approval

- Gasket material approved by 3A, USDA and complies with FDA's 21CFR177.2600 and .1550



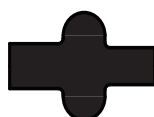
Standard Gaskets - 1/2" and 3/4"



Type 1 - Standard
1/2" & 3/4"

Size		Part Numbers					
mm	inch	Buna N	EPDM	FKM	Silicone	PTFE	White Seal
12.7	1/2	42MP-U50	42MP-E50	42MP-SFY50	42MP-XCPL50	42MP-G50	42MP-EW50
19.05	3/4	42MP-U75	42MP-E75	42MP-SFY75	42MP-XCPL75	42MP-G75	42MP-EW75

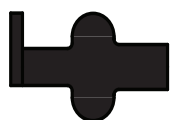
Standard Gaskets - 1" and Larger



Type 1 - Standard
1" to 12"

Size		Part Numbers					
mm	inch	Buna N	EPDM	FKM	Silicone	PTFE	White Seal
25.4	1	40MP-U100	40MP-E100	40MP-SFY100	40MP-XCPL100	40MP-G100	-
38.1	1 1/2	40MP-U150	40MP-E150	40MP-SFY150	40MP-XCPL150	40MP-G150	-
50.8	2	40MP-U200	40MP-E200	40MP-SFY200	40MP-XCPL200	40MP-G200	40MP-EW200
63.5	2 1/2	40MP-U250	40MP-E250	40MP-SFY250	40MP-XCPL250	40MP-G250	40MP-EW250
76.2	3	40MP-U300	40MP-E300	40MP-SFY300	40MP-XCPL300	40MP-G300	40MP-EW300
101.6	4	40MP-U400	40MP-E400	40MP-SFY400	40MP-XCPL400	40MP-G400	40MP-EW400
152.4	6	40MP-U600	40MP-E600	40MP-SFY600	40MP-XCPL600	40MP-G600	40MP-EW600
203.2	8	40MP-U800	-	-	-	-	-

Flanged Gaskets - 1" and Larger



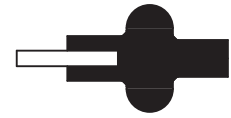
Type 2 - Flanged
1" to 12"

Size		Part Numbers		
mm	inch	EPDM	FKM	Silicone
25.4	1	40MPF-E100	40MPF-SFY100	40MPF-XCPL100
38.1	1 1/2	40MPF-E150	40MPF-SFY150	40MPF-XCPL150
50.8	2	40MPF-E200	40MPF-SFY200	40MPF-XCPL200
63.5	2 1/2	40MPF-E250	40MPF-SFY250	40MPF-XCPL250
76.2	3	40MPF-E300	40MPF-SFY300	40MPF-XCPL300
101.6	4	40MPF-E400	40MPF-SFY400	40MPF-XCPL400
152.4	6	40MPF-E600	40MPF-SFY600	40MPF-XCPL600
203.2	8	40MPF-E800	40MPF-SFY800	40MPF-XCPL800
254	10	40MPF-E1000	40MPF-SFY1000	40MPF-XCPL1000
304.8	12	40MPF-E1200	40MPF-SFY1200	40MPF-XCPL1200

Not recommended for use with bolted clamps

Mesh Screen Gaskets

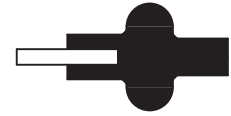
Size		Part Numbers		
mm	inch	Buna N	EPDM	FKM
25.4	1	40MPS-U100	40MPS-E100	40MPS-SFY100
38.1	1½	40MPS-U150	40MPS-E150	40MPS-SFY150
50.8	2	40MPS-U200	40MPS-E200	40MPS-SFY200
63.5	2½	40MPS-U250	40MPS-E250	40MPS-SFY250
76.2	3	40MPS-U300	40MPS-E300	40MPS-SFY300
101.6	4	40MPS-U400	40MPS-E400	40MPS-SFY400



Type 3 - Mesh

Perforated Gaskets - 0.33" Holes

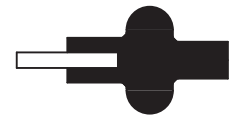
Size		Part Numbers
mm	inch	Buna N
25.4	1	40MP-UP100
38.1	1½	40MP-UP150
50.8	2	40MP-UP200
63.5	2½	40MP-UP250
76.2	3	40MP-UP300
101.6	4	40MP-UP400



Type 3 - Perforated

Orifice Gaskets - .125" Hole

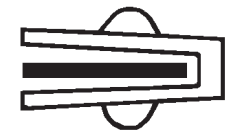
Size		Part Numbers	
mm	inch	Buna N	FKM
25.4	1	A80MP-U100	A80MP-SFY100
38.1	1½	A80MP-U150	A80MP-SFY150
50.8	2	A80MP-U200	A80MP-SFY200
63.5	2½	A80MP-U250	A80MP-SFY250
76.2	3	A80MP-U300	A80MP-SFY300
101.6	4	A80MP-U400	A80MP-SFY400



Type 3

Envelope Gaskets - PTFE

Size		Part Numbers	
mm	inch	EPDM Filler	FKM Filler
12.7	½	42MP-GRE50	42MP-GR50
19.05	¾	42MP-GRE75	42MP-GR75
25.4	1	42MP-GRE100	42MP-GR100
38.1	1½	42MP-GRE150	42MP-GR150
50.8	2	42MP-GRE200	42MP-GR200
63.5	2½	42MP-GRE250	42MP-GR250
76.2	3	42MP-GRE300	42MP-GR300
101.6	4	42MP-GRE400	42MP-GR400
152.4	6	42MP-GRE600	42MP-GR600
203.2	8	42MP-GRE800	42MP-GR800



- PTFE is a material subject to plastic flow when cycled through heat and then cooled down in process lines, PTFE gaskets will not return to the original configuration, and it will continue to compress as the cycling continues. This plastic flow will allow leakage if clamp torques are not maintained

Polished Butt Weld & Clamp Fittings

Application

- Polished butt weld fittings are typically used in welded pipe systems. They are designed to provide a smooth, crevice-free connection between two pieces of stainless steel or other compatible materials.

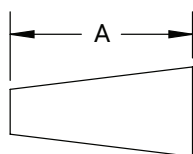
Material

- Polished 316L stainless steel
- 304 stainless steel

Approval

- AS1528.3:2019

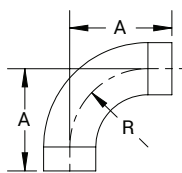
Butt Weld Concentric Reducer - AS1528.3



AS 1528.3:2019

Size		Part Numbers		A (mm)	Nominal Wall (mm)
mm	inch	SS316	SS304		
19.05 x 12.7	¾ x ½	B31W-R7550PA	B31W-G7550PA	19.05	1.6
25.4 x 12.7	1 x ½	B31W-R10050PA	B31W-G10050PA	25.40	1.6 or 2
25.4 x 19.05	1 x ¾	B31W-R10075PA	B31W-G10075PA	25.40	1.6 or 2
38.1 x 12.7	1½ x ½	B31W-R15050PA	B31W-G15050PA	38.10	1.6 or 2
38.1 x 19.05	1½ x ¾	B31W-R15075PA	B31W-G15075PA	38.10	1.6 or 2
38.1 x 25.4	1½ x 1	B31W-R150100PA	B31W-G150100PA	38.10	1.6 or 2
50.8 x 12.7	2 x ½	B31W-R20050PA	-	50.80	1.6 or 2
50.8 x 19.05	2 x ¾	B31W-R20075PA	-	50.80	1.6 or 2
50.8 x 25.4	2 x 1	B31W-R200100PA	B31W-G200100PA	50.80	1.6 or 2
50.8 x 38.1	2 x 1½	B31W-R200150PA	B31W-G200150PA	50.80	1.6 or 2
63.5 x 25.4	2½ x 1	B31W-R250100PA	B31W-G250100PA	63.50	1.6 or 2
63.5 x 38.1	2½ x 1½	B31W-R250150PA	B31W-G250150PA	63.50	1.6 or 2
63.5 x 50.8	2½ x 2	B31W-R250200PA	B31W-G250200PA	63.50	1.6 or 2
76.2 x 25.4	3 x 1	B31W-R300100PA	B31W-G300100PA	76.20	1.6 or 2
76.2 x 38.1	3 x 1½	B31W-R300150PA	B31W-G300150PA	76.20	1.6 or 2
76.2 x 50.8	3 x 2	B31W-R300200PA	B31W-G300200PA	76.20	1.6 or 2
76.2 x 63.5	3 x 2½	B31W-R300250PA	B31W-G300250PA	76.20	1.6 or 2
101.6 x 38.1	4 x 1½	B31W-R400150PA	B31W-G400150PA	101.6	1.6 or 2
101.6 x 50.4	4 x 2	B31W-R400200PA	B31W-G400200PA	101.6	1.6 or 2
101.6 x 63.5	4 x 2½	B31W-R400250PA	B31W-G400250PA	101.6	1.6 or 2
101.6 x 76.2	4 x 3	B31W-R400300PA	B31W-G400300PA	101.6	1.6 or 2
152.4 x 50.8	6 x 2	B31W-R600200PA	B31W-G600200PA	152.4	1.6 or 2
152.4 x 76.2	6 x 3	B31W-R600300PA	B31W-G600300PA	152.4	1.6 or 2
152.4 x 101.6	6 x 4	B31W-R600400PA	B31W-G600400PA	152.4	1.6 or 2
203.2 x 101.6	8 x 4	B31W-R800400PA	B31W-G800400PA	203.2	1.6, 2 or 2.5
203.2 x 152.4	8 x 6	B31W-R800600PA	B31W-G800600PA	203.2	1.6, 2 or 2.5

90° Butt Weld Elbows with Tangents - AS1528.3

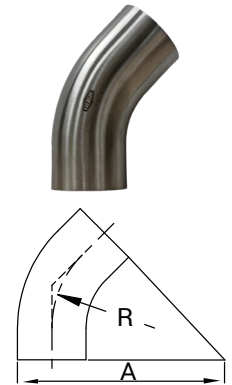


AS 1528.3:2019

Size		Part Numbers		A (mm)	R (mm)	Nominal Wall (mm)
mm	inch	SS316	SS304			
12.70	½	B2S-R50PA	B2S-G50PA	49.05	19.05	1.6
19.05	¾	B2S-R75PA	B2S-G75PA	58.58	28.58	1.6
25.40	1	B2S-R100PA	B2S-G100PA	68.10	38.10	1.6 or 2
38.10	1½	B2S-R150PA	B2S-G150PA	87.15	57.15	1.6 or 2
50.80	2	B2S-R200PA	B2S-G200PA	106.2	76.20	1.6 or 2
63.50	2½	B2S-R250PA	B2S-G250PA	125.25	95.25	1.6 or 2
76.20	3	B2S-R300PA	B2S-G300PA	144.3	114.3	1.6 or 2
101.6	4	B2S-R400PA	B2S-G400PA	182.4	152.4	1.6 or 2
152.4	6	B2S-R600PA	B2S-G600PA	268.6	228.6	1.6 or 2

45° Butt Weld Elbows with Tangents - AS1528.3

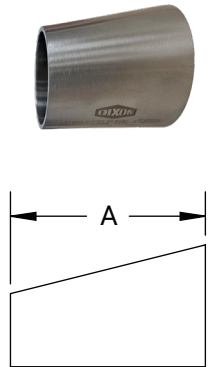
Size		Part Numbers		A (mm)	R (mm)	Nominal Wall (mm)
mm	inch	SS316	SS304			
12.70	½	B2KS-R50PA	B2KS-G50PA	97.90	19.05	1.6
19.05	¾	B2KS-R75PA	B2KS-G75PA	110.6	28.58	1.6
25.40	1	B2KS-R100PA	B2KS-G100PA	123.2	38.10	1.6 or 2
38.10	1½	B2KS-R150PA	B2KS-G150PA	148.7	57.15	1.6 or 2
50.80	2	B2KS-R200PA	B2KS-G200PA	174.1	76.20	1.6 or 2
63.50	2½	B2KS-R250PA	B2KS-G250PA	199.5	95.25	1.6 or 2
76.20	3	B2KS-R300PA	B2KS-G300PA	224.9	114.3	1.6 or 2
101.6	4	B2KS-R400PA	B2KS-G400PA	275.7	152.4	1.6 or 2



AS 1528.3:2019

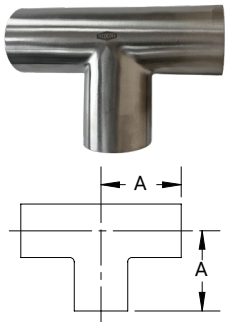
Polished Eccentric Weld Reducer - AS1528.3

Size		Part Numbers		A (mm)	Nominal Wall (mm)
mm	inch	SS316	SS304		
19.05 x 12.7	¾ x ½	B32W-R7550PA	-	19.05	1.6
25.4 x 12.7	1 x ½	B32W-R10050PA	-	25.40	1.6 or 2
25.4 x 19.05	1 x ¾	B32W-R10075PA	-	25.40	1.6 or 2
38.1 x 12.7	1½ x ½	B32W-R15050PA	-	38.10	1.6 or 2
38.1 x 19.05	1½ x ¾	B32W-R15075PA	-	38.10	1.6 or 2
38.1 x 25.4	1½ x 1	B32W-R150100PA	B32W-G150100PA	38.10	1.6 or 2
50.8 x 12.7	2 x ½	B32W-R20050PA	-	50.80	1.6 or 2
50.8 x 19.05	2 x ¾	B32W-R20075PA	-W	50.80	1.6 or 2
50.8 x 25.4	2 x 1	B32W-R200100PA	B32W-G200100PA	50.80	1.6 or 2
50.8 x 38.1	2 x 1½	B32W-R200150PA	B32W-G200150PA	50.80	1.6 or 2
63.5 x 38.1	2½ x 1½	B32W-R250150PA	B32W-G250150PA	63.50	1.6 or 2
63.5 x 50.8	2½ x 2	B32W-R250200PA	B32W-G250200PA	63.50	1.6 or 2
76.2 x 25.4	3 x 1	B32W-R300100PA	B32W-G300100PA	76.20	1.6 or 2
76.2 x 38.1	3 x 1½	B32W-R300150PA	B32W-G300150PA	76.20	1.6 or 2
76.2 x 50.8	3 x 2	B32W-R300200PA	B32W-G300200PA	76.20	1.6 or 2
76.2 x 63.5	3 x 2½	B32W-R300250PA	B32W-G300250PA	76.20	1.6 or 2
101.6 x 38.1	4 x 1½	B32W-R400150PA	B32W-G400150PA	101.6	1.6 or 2
101.6 x 50.4	4 x 2	B32W-R400200PA	B32W-G400200PA	101.6	1.6 or 2
101.6 x 63.5	4 x 2½	B32W-R400250PA	B32W-G400250PA	101.6	1.6 or 2
101.6 x 76.2	4 x 3	B32W-R400300PA	B32W-G400300PA	101.6	1.6 or 2
152.4 x 76.2	6 x 3	B32W-R600300PA	B32W-G600300PA	152.4	1.6 or 2
152.4 x 101.6	6 x 4	B32W-R600400PA	B32W-G600400PA	152.4	1.6 or 2
203.2 x 101.6	8 x 4	B32W-R800400PA	B32W-G800400PA	203.2	1.6, 2 or 2.5
203.2 x 152.4	8 x 6	B32W-R800600PA	B32W-G800600PA	203.2	1.6, 2 or 2.5



AS 1528.3:2019

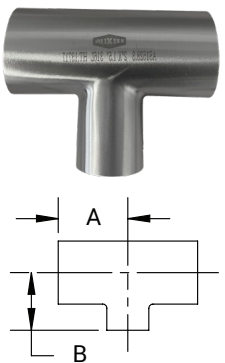
Butt Weld Long Tee - AS1528.3



AS 1528.3:2019

Size		Part Numbers		A (mm)	Nominal Wall (mm)
mm	inch	SS316	SS304		
12.70	½	B7W-R50PA	B7W-G50PA	19.05	1.6
19.05	¾	B7W-R75PA	B7W-G75PA	28.58	1.6
25.40	1	B7W-R100PA	B7W-G100PA	38.10	1.6 or 2
38.10	1½	B7W-R150PA	B7W-G150PA	57.15	1.6 or 2
50.80	2	B7W-R200PA	B7W-G200PA	76.20	1.6 or 2
63.50	2½	B7W-R250PA	B7W-G250PA	95.25	1.6 or 2
76.20	3	B7W-R300PA	B7W-G300PA	114.3	1.6 or 2
101.6	4	B7W-R400PA	B7W-G400PA	152.4	1.6 or 2
152.4	6	B7W-R600PA	B7W-G600PA	228.6	1.6 or 2

Butt Weld Reducing Tee - AS1528.3



AS 1528.3:2019

Size		Part Numbers		A (mm)	Nominal Wall (mm)
mm	inch	SS316	SS304		
19.05 x 12.7	¾ x ½	B7RWWW-R7550PA	-	19.05	1.6
25.4 x 12.7	1 x ½	B7RWWW-R10050PA	-	28.58	1.6 or 2
25.4 x 19.05	1 x ¾	B7RWWW-R10075PA	-	28.58	1.6 or 2
38.1 x 12.7	1½ x ½	B7RWWW-R15050PA	-	47.63	1.6 or 2
38.1 x 19.05	1½ x ¾	B7RWWW-R15075PA	-	47.63	1.6 or 2
38.1 x 25.4	1½ x 1	B7RWWW-R150100PA	B7RWWW-G150100PA	47.63	1.6 or 2
50.8 x 25.4	2 x 1	B7RWWW-R200100PA	B7RWWW-G200100PA	57.15	1.6 or 2
50.8 x 38.1	2 x 1½	B7RWWW-R200150PA	B7RWWW-G200150PA	57.15	1.6 or 2
63.5 x 38.1	2½ x 1½	B7RWWW-R250150PA	B7RWWW-G250150PA	76.20	1.6 or 2
63.5 x 50.8	2½ x 2	B7RWWW-R250200PA	B7RWWW-G250200PA	76.20	1.6 or 2
76.2 x 38.1	3 x 1½	B7RWWW-R300150PA	B7RWWW-G300150PA	95.25	1.6 or 2
76.2 x 50.8	3 x 2	B7RWWW-R300200PA	B7RWWW-G300200PA	95.25	1.6 or 2
76.2 x 63.5	3 x 2½	B7RWWW-R300250PA	B7RWWW-G300250PA	92.25	1.6 or 2
101.6 x 38.1	4 x 1½	B7RWWW-R400150PA	B7RWWW-G400150PA	114.3	1.6 or 2
101.6 x 50.4	4 x 2	B7RWWW-R400200PA	B7RWWW-G400200PA	114.3	1.6 or 2
101.6 x 63.5	4 x 2½	B7RWWW-R400250PA	B7RWWW-G400250PA	114.3	1.6 or 2
101.6 x 76.2	4 x 3	B7RWWW-R400300PA	B7RWWW-G400300PA	114.3	1.6 or 2
152.4 x 50.4	6 x 2	B7RWWW-R600200PA	B7RWWW-G600200PA	190.5	1.6 or 2
152.4 x 76.2	6 x 3	B7RWWW-R600300PA	B7RWWW-G600300PA	190.5	1.6 or 2
152.4 x 101.6	6 x 4	B7RWWW-R600400PA	B7RWWW-G600400PA	190.5	1.6 or 2

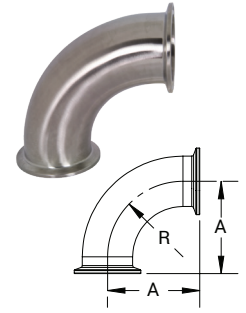
45° Clamp Elbows



A 3	Size		Part Numbers		A (mm)	R (mm)
	mm	inch	SS316	SS304		
	12.7	½	B2KMP-R50	-	24.6	28.7
	19.05	¾	B2KMP-R75	-	24.6	28.7
	25.4	1	B2KMP-R100	B2KMP-G100	24.4	38.1
	38.1	1½	B2KMP-R150	B2KMP-G150	36.5	57.1
	50.8	2	B2KMP-R200	B2KMP-G200	44.4	76.2
	63.5	2½	B2KMP-R250	B2KMP-G250	52.3	95.2
	76.2	3	B2KMP-R300	B2KMP-G300	60.2	114.3
	101.6	4	B2KMP-R400	B2KMP-G400	79.5	152.4
	152.4	6	B2KMP-R600	B2KMP-G600	117.6	228.6

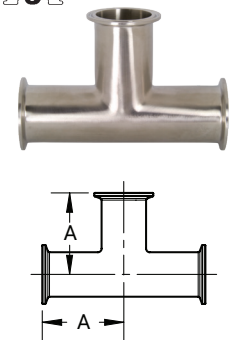
90° Clamp Elbows

Size		Part Numbers		A (mm)	R (mm)
mm	inch	SS316	SS304		
12.7	½	B2CMP-R50	-	41.4	28.7
19.05	¾	B2CMP-R75	-	41.4	28.7
25.4	1	B2CMP-R100	B2CMP-G100	50.4	38.1
38.1	1½	B2CMP-R150	B2CMP-G150	69.8	57.1
50.8	2	B2CMP-R200	B2CMP-G200	88.9	76.2
63.5	2½	B2CMP-R250	B2CMP-G250	107.9	95.25
76.2	3	B2CMP-R300	B2CMP-G300	127.0	114.3
101.6	4	B2CMP-R400	B2CMP-G400	168.4	152.4
152.4	6	B2CMP-R600	B2CMP-G600	250.9	228.6



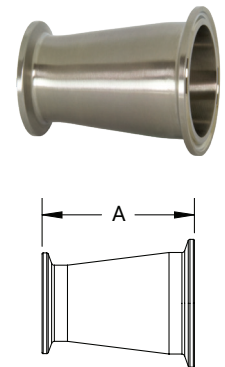
Clamp Tees

Size		Part Numbers		A (mm)
mm	inch	SS316	SS304	
12.7	½	B7MP-R50	-	60.45
19.05	¾	B7MP-R75	-	63.50
25.4	1	B7MP-R100	B7MP-G100	60.45
38.1	1½	B7MP-R150	B7MP-G150	69.85
50.8	2	B7MP-R200	B7MP-G200	88.90
63.5	2½	B7MP-R250	B7MP-G250	88.90
76.2	3	B7MP-R300	B7MP-G300	95.25
101.6	4	B7MP-R400	B7MP-G400	114.3
152.4	6	B7MP-R600	B7MP-G600	165.1



Clamp Concentric Reducers

Size		Part Numbers		A (mm)
mm	inch	SS316	SS304	
19.05 x 12.7	¾ x ½	B3114MP-R7550	-	50.8
25.4 x 12.7	1 x ½	B3114MP-R10050	-	76.2
25.4 x 19.05	1 x ¾	B3114MP-R10075	-	50.8
38.1 x 12.7	1½ x ½	B3114MP-R15050	-	127.0
38.1 x 19.05	1½ x ¾	B3114MP-R15075	-	101.6
38.1 x 25.4	1½ x 1	B3114MP-R150100	B3114MP-G150100	76.2
50.8 x 12.7	2 x ½	B3114MP-R20050	-	177.8
50.8 x 19.05	2 x ¾	B3114MP-R20075	-	152.4
50.8 x 25.4	2 x 1	B3114MP-R200100	B3114MP-G200100	127.0
50.8 x 38.1	2 x 1½	B3114MP-R200150	B3114MP-G200150	76.2
63.5 x 38.1	2½ x 1½	B3114MP-R250150	B3114MP-G250150	127.0
63.5 x 50.8	2½ x 2	B3114MP-R250200	B3114MP-G250200	76.2
76.2 x 25.4	3 x 1	B3114MP-R300100	B3114MP-G300100	228.6
76.2 x 38.1	3 x 1½	B3114MP-R300150	B3114MP-G300150	177.8
76.2 x 50.8	3 x 2	B3114MP-R300200	B3114MP-G300200	127.0
76.2 x 63.5	3 x 2½	B3114MP-R300250	B3114MP-G300250	76.2
101.6 x 38.1	4 x 1½	B3114MP-R400150	B3114MP-G400150	282.7
101.6 x 50.4	4 x 2	B3114MP-R400200	B3114MP-G400200	231.9
101.6 x 63.5	4 x 2½	B3114MP-R400250	B3114MP-G400250	181.1
101.6 x 76.2	4 x 3	B3114MP-R400300	B3114MP-G400300	130.3
152.4 x 50.8	6 x 2	B3114MP-R600200	B3114MP-G600200	174.7
152.4 x 76.2	6 x 3	B3114MP-R600300	B3114MP-G600300	174.7
152.4 x 101.6	6 x 4	B3114MP-R600400	B3114MP-G600400	177.8
203.2 x 101.6	8 x 4	B3114MP-R800400	B3114MP-G800400	190.5
203.2 x 152.4	8 x 6	B3114MP-R800600	B3114MP-G800600	196.8



SJSS Swivel Series

Application

- A range of combination swivel joints are available to assist with moving hoses through process lines and keeping hoses away from machinery and forklifts. All joints meet food and beverage industry certification standards.

Features

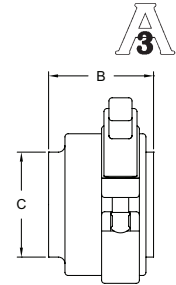
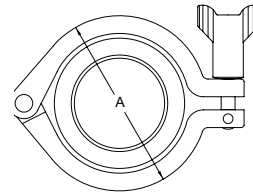
- Longer inner body for easier repair kit insertion
- Large chamber for a rapid, smooth assembly

Material

- Product Contact Components: 316L stainless steel
- Non-Product Contact Components: 304 stainless steel
- Gaskets: PTFE and silicone available

Approval

- 3A certified



Tube OD Size		Part Numbers	Dimensions			PSI at 21°C	PSI at 121°C	Torque (in lbs)
mm	inch		A	B	C			
25.4	1	SJSS100EBB120	65	50.8	25.4	500	300	300
38.1	1½	SJSS150EBB120	65	50.8	38.1	500	300	300
50.8	2	SJSS200EBB120	78.49	50.8	50.8	450	250	250
63.5	2½	SJSS250EBB120	87.34	50.8	63.5	400	200	200
76.2	3	SJSS300EBB120	100.08	50.8	76.2	350	175	175
101.6	4	SJSS400EBB120	129.03	74.68	101.6	300	150	150

Sanitary Breakaway Couplings

Application

- Minimises spillage and damage associated with pull-away and drive-away incidents. Coupling breaks away with an excessive load.

Features

- Designed to be installed between a fixed point and a hose
- 24kN break load bolts standard, other break loads available

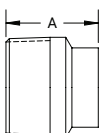
Material

- Coupling: 316 stainless steel polished to standard <0.8Ra µm, 3A finish
- Clamp Gasket: white EPDM standard, optional material available



Size		Part Numbers
mm	inch	
50.8	2	SBC-200BBE-13
63.5	2½	SBC-250BBE-13
76.2	3	SBC-300BBE-13
101.6	4	SBC-400BBE-13

BSP Tube Adaptors - Stainless Steel



Size		Part Numbers	A (mm)	Nominal Wall (mm)
mm	inch			
12.7	½	B19WB-R50A	41.4	1.6
19.05	¾	B19WB-R75A	41.4	1.6
25.4	1	B19WB-R100A	44.4	1.6
38.1	1½	B19WB-R150A	44.4	1.6
50.8	2	B19WB-R200A	45.9	1.6
63.5	2½	B19WB-R250A	58.6	1.6
76.2	3	B19WB-R300A	63.5	1.6
101.6	4	B19WB-R400A	65.0	2.1

BSP Threaded Pipe Fittings

Application

- For use in low-pressure applications, suitable for use in harsh environments.

Body Material

- CF8M (316 stainless steel) manufactured to ASTM A35n

Thread Standard

- ISO 7-1 pipe threads where pressure-tight joints are made on the threads

Design Standards

- Generally in accordance with AS3673. Slight variations may occur where manufacturer's dimensions are used

Design Standard

- Class 150lbs

Working Pressure

- 300 PSI

90° Elbows - Female x Female

Thread Size BSP		Part Numbers
mm	inch	316 Stainless Steel
6	1/8	SS16EL006
8	1/4	SS16EL008
10	3/8	SS16EL010
15	1/2	SS16EL015
20	3/4	SS16EL020
25	1	SS16EL025
32	1 1/4	SS16EL032
40	1 1/2	SS16EL040
50	2	SS16EL050
65	2 1/2	SS16EL065
80	3	SS16EL080
100	4	SS16EL100



90° Elbows - Male x Female

Thread Size BSP		Part Numbers
mm	inch	316 Stainless Steel
6	1/8	SS16ELMF006
8	1/4	SS16ELMF008
10	3/8	SS16ELMF010
15	1/2	SS16ELMF015
20	3/4	SS16ELMF020
25	1	SS16ELMF025
32	1 1/4	SS16ELMF032
40	1 1/2	SS16ELMF040
50	2	SS16ELMF050
65	2 1/2	SS16ELMF065
80	3	SS16ELMF080
100	4	SS16ELMF100



16.6° Elbow - Male x Female

Thread Size BSP		Part Numbers
mm	inch	
25	1	SS16E16MF025
40	1 1/2	SS16E16MF040
50	2	SS16E16MF050
65	2 1/2	SS16E16MF065



Equal Tees - Female



Thread Size BSP		Part Numbers
mm	inch	
6	1/8	SS16T006
8	1/4	SS16T008
10	3/8	SS16T010
15	1/2	SS16T015
20	3/4	SS16T020
25	1	SS16T025
32	1 1/4	SS16T032
40	1 1/2	SS16T040
50	2	SS16T050
65	2 1/2	SS16T065
80	3	SS16T080
100	4	SS16T100

Cross



Thread Size BSP		Part Numbers
mm	inch	
15	1/2	SS16CR015

Hex Plugs



Thread Size BSP		Part Numbers
mm	inch	
8	1/4	SS16XP008
10	3/8	SS16XP010
15	1/2	SS16XP015
20	3/4	SS16XP020
25	1	SS16XP025
32	1 1/4	SS16XP032
40	1 1/2	SS16XP040
50	2	SS16XP050
65	2 1/2	SS16XP065
80	3	SS16XP080
100	4	SS16XP100

Unions - Female x Female



Thread Size BSP		Part Numbers
mm	inch	
10	3/8	SS16FU010
15	1/2	SS16FU015
20	3/4	SS16FU020
25	1	SS16FU025
32	1 1/4	SS16FU032
40	1 1/2	SS16FU040
50	2	SS16FU050
65	2 1/2	SS16FU065
80	3	SS16FU080
100	4	SS16FU100

Reducing Hex Bush

Thread Size BSP		Part Numbers
mm	inch	
8 x 6	1/4 x 1/8	SS16B0806
10 x 6	3/8 x 1/8	SS16B1006
10 x 8	3/8 x 1/4	SS16B1008
15 x 6	1/2 x 1/8	SS16B1506
15 x 8	1/2 x 1/4	SS16B1508
15 x 10	1/2 x 3/8	SS16B1510
20 x 8	3/4 x 1/4	SS16B2008
20 x 10	3/4 x 3/8	SS16B2010
20 x 15	3/4 x 1/2	SS16B2015
25 x 15	1 x 1/2	SS16B2515
25 x 20	1 x 3/4	SS16B2520
32 x 15	1 1/4 x 1/2	SS16B3215
32 x 20	1 1/4 x 3/4	SS16B3220
32 x 25	1 1/4 x 1	SS16B3225
40 x 15	1 1/2 x 1/2	SS16B4015
40 x 20	1 1/2 x 3/4	SS16B4020
40 x 25	1 1/2 x 1	SS16B4025
40 x 32	1 1/2 x 1 1/4	SS16B4032
50 x 25	2 x 1	SS16B5025
50 x 32	2 x 1 1/4	SS16B5032
50 x 40	2 x 1 1/2	SS16B5040
65 x 50	2 1/2 x 2	SS16B6550
80 x 50	3 x 2	SS16B8050
80 x 65	3 x 2 1/2	SS16B8065
100 x 50	4 x 2	SS16B100050
100 x 80	4 x 3	SS16B10080



Sockets

Thread Size BSP		Part Numbers
mm	inch	
6	1/8	SS16S006
8	1/4	SS16S008
10	3/8	SS16S010
15	1/2	SS16S015
20	3/4	SS16S020
25	1	SS16S025
32	1 1/4	SS16S032
40	1 1/2	SS16S040
50	2	SS16S050
65	2 1/2	SS16S065
80	3	SS16S080
100	4	SS16S0100



Caps



Thread Size BSP		Part Numbers
mm	inch	
20	¾	SS16C020
25	1	SS16C025
32	1¼	SS16C032
40	1½	SS16C040
50	2	SS16C050
80	3	SS16C080
100	4	SS16C100

Hex Nipples



Thread Size BSP		Part Numbers
mm	inch	
6	⅛	SS16HN006
8	¼	SS16HN008
10	⅜	SS16HN010
15	½	SS16HN015
20	¾	SS16HN020
25	1	SS16HN025
32	1¼	SS16HN032
40	1½	SS16HN040
50	2	SS16HN050
65	2½	SS16HN065
80	3	SS16HN080
100	4	SS16HN100

Reducing Hex Nipples



Thread Size BSP		Part Numbers
mm	inch	
8 x 6	¼ x ⅛	SS16N00806
10 x 6	⅜ x ⅛	SS16N01006
10 x 8	⅜ x ¼	SS16N01008
15 x 8	½ x ¼	SS16N01508
15 x 10	½ x ⅜	SS16N01510
20 x 8	¾ x ¼	SS16N02008
20 x 10	¾ x ⅜	SS16N02010
20 x 15	¾ x ½	SS16N02015
25 x 15	1 x ½	SS16N02515
25 x 20	1 x ¾	SS16N02520
32 x 20	1¼ x ¾	SS16N03220
32 x 25	1¼ x 1	SS16N03225
40 x 20	1½ x ¾	SS16N04020
40 x 25	1½ x 1	SS16N04025
40 x 32	1½ x 1¼	SS16N04032
50 x 25	2 x 1	SS16N05025
50 x 32	2 x 1¼	SS16N05032
50 x 40	2 x 1½	SS16N05040
65 x 50	2½ x 2	SS16N06550
80 x 50	3 x 2	SS16N08050
80 x 65	3 x 2½	SS16N08065
100 x 50	4 x 2	SS16N10050
100 x 80	4 x 3	SS16N10080

Reducing Male BSP Hose Tails

Male BSP		Hose Tail		Part Numbers
mm	inch	mm	inch	316 Stainless Steel
15	½	20	¾	SS16HTR1520
20	¾	15	½	SS16HTR2015
20	¾	16	⅝	SS16HTR2016
25	1	16	⅝	SS16HTR2516
25	1	20	¾	SS16HTR2520
40	1½	32	1¼	SS16HTR4032
50	2	40	1½	SS16HTR5040
50	1	45	1¾	SS16HTR5045
65	2½	50	2	SS16HTR6550
80	3	65	2½	SS16HTR8065
100	4	80	3	SS16HTR10080



Male BSP Hose Tails

Male BSP		Hose Tail		Part Numbers
mm	inch	mm	inch	316 Stainless Steel
6	⅛	6	⅛	SS16HT006
8	¼	8	¼	SS16HT008
10	⅜	10	⅜	SS16HT010
15	½	15	½	SS16HT015
20	¾	20	¾	SS16HT020
25	1	25	1	SS16HT025
32	1¼	32	1¼	SS16HT032
40	1½	40	1½	SS16HT040
50	2	50	2	SS16HT050
65	2½	65	2½	SS16HT065
80	3	80	3	SS16HT080
100	4	100	4	SS16HT0100
150	6	150	6	SS16HT0150



Toe Weld Nipples

Thread Size BSP		Part Numbers
mm	inch	316 Stainless Steel
10	⅜	SS16TN010
15	½	SS16TN015
20	¾	SS16TN020
25	1	SS16TN025
32	1¼	SS16TN032
40	1½	SS16TN040
50	2	SS16TN050
65	2½	SS16TN065
80	3	SS16TN080
100	4	SS16TN010







Valves

Offering a comprehensive range of valves designed for the winemaking industry, our selection includes ball valves, butterfly valves, knife gate valves, sample valves, single-seat valves, and various Rieger valves. These valves deliver precise control and dependable performance, ensuring efficient and seamless operations throughout your winemaking process.

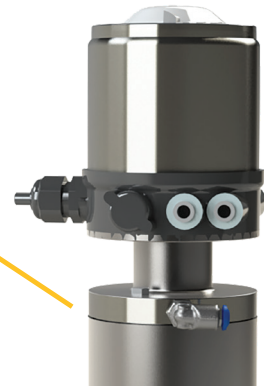


B5107-Series Butterfly Valve



Actuation Coupler

Coupler design eliminates the need for the roll pin to connect to the actuator, saving time during assembly. Additionally, sensing targets are incorporated into the coupler meaning no extra accessories are needed when adding external proximity sensors



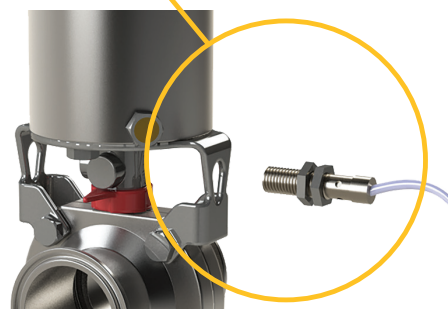
Control Top Ready Actuator

Actuator design allows for a control top to be added to any standard actuator in the field without the need to change the actuator



Single Piece Actuator Bracket

Single piece bracket makes assembly fast and easy compared to two-piece designs



Prox-Ready Mounting Holes

Sensors can easily be added to any actuated valve without the need to purchase additional mounting hardware

B5107 Series Butterfly Valves

Application

- Hygienic shut-off valve for use in stainless steel tube systems on tanks and general food and beverage processing. For use on low to medium-viscosity liquids, as well as food, beverage, wine, brewery, and personal care.

Features

- 100% hydraulic tested/100% inspected
- All wetted surfaces are sanitary finished to 32Ra
- Field serviceable (no special tools required)

Materials

Construction

- Product contact components, body, and disc: forged 316L
- Non-product contact components: 304

Sealing

- Product contact component, seals: EPDM, FKM, silicone
- Non-product contact components, bushings: Polyacetal

Connections

- Tube weld (standard)
- Other end connections on request: Weld end, female I-Line, male I-Line, threaded bevel, plain bevel, Q-Line, John Perry threaded

Product Operating Temperature

- Maximum: 93°C
- Minimum: -9°C

Minimum Line Pressure

- 0.4 inches Hg vacuum at 20°C

Surface Finish

- Product contact components: Ra ≤ 0.8
- Optional finishes: 0.38µm (15Ra), 0.58µm (20Ra), 0.635µm (25Ra)

Valve Stem Size

- ½" to 4" - 10mm
- 6" - 13mm
- 8" - 14mm

Based on Water at 20°C

Valve Size		Break Torque (in-Nm)			Pressure Rating		Flow Coefficient (Cv)
mm	inch	Silicone	EPDM	FKM	PSI	kPa	
12	½	2	1.5	8	140	965	7
20	¾	2	1.5	8	140	965	11
25	1	3	1.5	8	140	965	23
38	1½	4	2	14	140	965	80
50	2	4	5.5	20	140	965	230
65	2½	15	11	25	110	758	264
80	3	15	16.5	35	110	758	372
100	4	30	39	51	85	586	800
150	6	87.5	94	n/a	60	413	1200
200	8	125	125	n/a	60	413	2800

B5107 Series Butterfly Valves - Pull Handle

Weld End

Size		Part Numbers		
mm	inch	EPDM	Silicone	FKM
12	½	B5107E050BB-A	B5107S050BB-A	B5107V050BB-A
20	¾	B5107E075BB-A	B5107S075BB-A	B5107V075BB-A
25	1	B5107E100BB-A	B5107S100BB-A	B5107V100BB-A
38	1½	B5107E150BB-A	B5107S150BB-A	B5107V150BB-A
50	2	B5107E200BB-A	B5107S200BB-A	B5107V200BB-A
65	2½	B5107E250BB-A	B5107S250BB-A	B5107V250BB-A
80	3	B5107E300BB-A	B5107S300BB-A	B5107V300BB-A
100	4	B5107E400BB-A	B5107S400BB-A	B5107V400BB-A
150	6	B5107E600BB-A	B5107S600BB-A	B5107V600BB-A
200	8	B5107E800BB-A	B5107S800BB-A	B5107V800BB-A





Clamp End

Size		Part Numbers		
mm	inch	EPDM	Silicone	FKM
12	½	B5107E050CC-A	B5107S050CC-A	B5107V050CC-A
20	¾	B5107E075CC-A	B5107S075CC-A	B5107V075CC-A
25	1	B5107E100CC-A	B5107S100CC-A	B5107V100CC-A
38	1½	B5107E150CC-A	B5107S150CC-A	B5107V150CC-A
50	2	B5107E200CC-A	B5107S200CC-A	B5107V200CC-A
65	2½	B5107E250CC-A	B5107S250CC-A	B5107V250CC-A
80	3	B5107E300CC-A	B5107S300CC-A	B5107V300CC-A
100	4	B5107E400CC-A	B5107S400CC-A	B5107V400CC-A
150	6	B5107E600CC-A	B5107S600CC-A	B5107V600CC-A
200	8	B5107E800CC-A	B5107S800CC-A	B5107V800CC-A

B5107 Series Butterfly Valves - Trigger Handle



Weld End

Size		Part Numbers		
mm	inch	EPDM	Silicone	FKM
12	½	B5107E050BB-C	B5107S050BB-C	B5107V050BB-C
20	¾	B5107E075BB-C	B5107S075BB-C	B5107V075BB-C
25	1	B5107E100BB-C	B5107S100BB-C	B5107V100BB-C
38	1½	B5107E150BB-C	B5107S150BB-C	B5107V150BB-C
50	2	B5107E200BB-C	B5107S200BB-C	B5107V200BB-C
65	2½	B5107E250BB-C	B5107S250BB-C	B5107V250BB-C
80	3	B5107E300BB-C	B5107S300BB-C	B5107V300BB-C
100	4	B5107E400BB-C	B5107S400BB-C	B5107V400BB-C
150	6	B5107E600BB-C	B5107S600BB-C	B5107V600BB-C
200	8	B5107E800BB-C	B5107S800BB-C	B5107V800BB-C



Clamp End

Size		Part Numbers		
mm	inch	EPDM	Silicone	FKM
12	½	B5107E050CC-C	B5107S050CC-C	B5107V050CC-C
20	¾	B5107E075CC-C	B5107S075CC-C	B5107V075CC-C
25	1	B5107E100CC-C	B5107S100CC-C	B5107V100CC-C
38	1½	B5107E150CC-C	B5107S150CC-C	B5107V150CC-C
50	2	B5107E200CC-C	B5107S200CC-C	B5107V200CC-C
65	2½	B5107E250CC-C	B5107S250CC-C	B5107V250CC-C
80	3	B5107E300CC-C	B5107S300CC-C	B5107V300CC-C
100	4	B5107E400CC-C	B5107S400CC-C	B5107V400CC-C
150	6	B5107E600CC-C	B5107S600CC-C	B5107V600CC-C
200	8	B5107E800CC-C	B5107S800CC-C	B5107V800CC-C

Vertical Spring Return Actuation Butterfly Valves Stainless Steel

Application

- "Automatic" shut-off valve for use in stainless steel tube systems on tanks and in general food and beverage processing. Suitable for use with low to medium-viscosity liquids, as well as with food, beverage, wine, brewery, and personal care products.

Weld End

Size		EPDM Seats & Vertical Canister Style Actuator - Butt Weld		
mm	inch	EPDM Seats Normally Closed	EPDM Seats Normally Open	EPDM Seats Double Acting
25	1	B5107E100BBG	B5107E100BBF	B5107E100BBH
38	1½	B5107E150BBG	B5107E150BBF	B5107E150BBH
50	2	B5107E200BBG	B5107E200BBF	B5107E200BBH
65	2½	B5107E250BBG	B5107E250BBF	B5107E250BBH
80	3	B5107E300BBG	B5107E300BBF	B5107E300BBH
100	4	B5107E400BBG	B5107E400BBF	B5107E400BBH

Also available in silicon and FKM



Clamp End

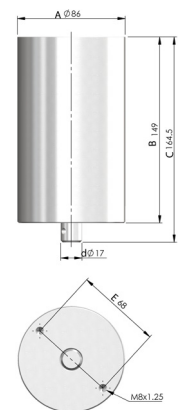
Size		EPDM Seats & Vertical Canister Style Actuator - Butt Weld		
mm	inch	EPDM Seats Normally Closed	EPDM Seats Normally Open	EPDM Seats Double Acting
25	1	B5107E100CCG	B5107E100CCF	B5107E100CCH
38	1½	B5107E150CCG	B5107E150CCF	B5107E150CCH
50	2	B5107E200CCG	B5107E200CCF	B5107E200CCH
65	2½	B5107E250CCG	B5107E250CCF	B5107E250CCH
80	3	B5107E300CCG	B5107E300CCF	B5107E300CCH
100	4	B5107E400CCG	B5107E400CCF	B5107E400CCH

Also available in silicon and FKM



Actuator Specifications

	Double Acting	Spring Return
Down Stroke CW	139	139
Up Stroke CCW	328	303
Max. Temperature	121°C	121°C
Min. Temperature	-20°C	-20°C
Output Torque (Nm)	65.14	65.14
Max Pressure (psi)	120	120
Supply Pressure (psi)	80-100	80-100
Diameter (mm)	86	86
Height (mm)	149	149
Air Fitting Ports (inch)	1/8 NPT	1/8 NPT

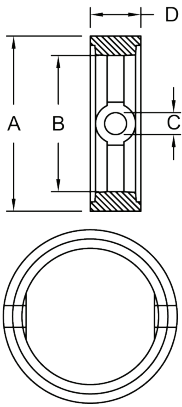


Mounting Kits

Size		Part Numbers	
mm	inch	Double Acting	Spring Return
12 - 38	½ - 1½	VC1DA-7-5015	VC1SR-7-5015
50 - 65	2 - 2½	VC1DA-7-2025	VC1SR-7-2025
80 - 100	3 - 4	VC1DA-1-7-3040	VC1SR-1-7-3040



B5107 Seat Dimensions



Size		A (mm)	B (mm)	C (mm)	D (mm)
mm	inch				
12 - 25	½ - 1	36.06	21.08	9.40	19.56
38	1½	49.02	34.04	9.40	19.56
50	2	65.02	43.94	9.40	19.81
65	2½	76.96	59.69	11.68	23.11
80	3	92.96	71.12	13.97	27.94
100	4	125.98	98.04	15.75	36.32
150	6	173.48	147.07	15.75	43.18
200	8	236.73	200.41	17.02	40.39

Repair Kits - USP Class VI Certified



Size		Part Numbers		
mm	inch	Black EPDM	Red Silicone	Brown FKM
25	1	B5107-RKE100	B5107-RKS100	B5107-RKV100
38	1½	B5107-RKE150	B5107-RKS150	B5107-RKV150
50	2	B5107-RKE200	B5107-RKS200	B5107-RKV200
65	2½	B5107-RKE250	B5107-RKS250	B5107-RKV250
80	3	B5107-RKE300	B5107-RKS300	B5107-RKV300
100	4	B5107-RKE400	B5107-RKS400	B5107-RKV400
150	6	B5107-RKE600	B5107-RKS600	B5107-RKV600
200	8	B5107-RKE800	-	B5107-RKV800

For B5107 series valves, also compatible with B5101 series valves



Complete Winery Hose Solutions

Rubber and PVC
Hose, Couplings,
Clamps and Crimped
Hosetails for a Safe
and Integrated Hose
Assembly.



HSC Series Spring Check Valves

Application

- Spring check valves are designed to prevent reverse flow. The concentric design makes them ideal for vertical food and beverage applications.

Features

- Single-piece upper-body spider design
- Machined from solid bar
- Standard O-ring and gasket seal design
- Can be serviced in the field (no special tools required)
- Finish: sanitary polish 32Ra
- Suitable for low and medium-viscosity fluids
- Connection: clamp (standard), others available upon request

End Connections

- Weld, Triclover, SMS, DIN, and RJT ends are available

Maximum Operating Pressure

- 145 PSI at -9.4°C to 93°C

Maximum Operating Temperature

- -9°C to 93°C (15°F to 200°F)

Size		Part Numbers				Cracking Pressure (PSI)
		HSC - EPDM		EHSC - EPDM		
mm	inch	Clamp End	Weld End	Clamp End	Weld End	
12	½	HSCE050	HSCE050BB	EHSCE050	EHSCE050BB	10.0
20	¾	HSCE075	HSCE075BB	EHSCE075	EHSCE075BB	4.0
25	1	HSCE100	HSCE100BB	EHSCE100	EHSCE100BB	2.5
38	1½	HSCE150	HSCE150BB	EHSCE150	EHSCE150BB	1.0
50	2	HSCE200	HSCE200BB	EHSCE200	EHSCE200BB	1.5
65	2½	HSCE250	HSCE250BB	EHSCE250	EHSCE250BB	0.8
80	3	HSCE300	HSCE300BB	EHSCE300	EHSCE300BB	0.5
100	4	HSCE400	HSCE400BB	EHSCE400	EHSCE400BB	0.4



HSC - Vertical Mount



EHSC - Horizontal Mount

FKM available upon request

Dimensions

Size		A (inch)
mm	inch	
12	½	2.7
20	¾	2.7
25	1	3.3
38	1½	3.4
50	2	3.4
65	2½	3.4
80	3	3.4
100	4	4.1



Repair Kits

Size		Part Numbers
mm	inch	
12	½	HSC-RKE050
20	¾	HSC-RKE075
25	1	HSC-RKE100
38	1½	HSC-RKE150
50	2	HSC-RKE200
65	2½	HSC-RKE250
80	3	HSC-RKE300
100	4	HSC-RKE400

Kits Contain:

1/2" - 3/4" repair kit contains:

- (1) body gasket
- (1) plunger O-ring
- (1) spider O-ring

1" - 4" repair kit contains:

- (1) body gasket
- (1) plunger O-ring



Ball Valves - Encapsulated

Application

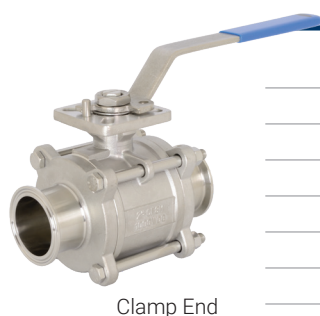
- Hygienic ball valve for food and beverage, and chemical use with ISO mount plate.

Features

- Balanced encapsulated construction minimises cold flow
- Live-loaded stem packing
- Precision stainless steel balls reduce torque and friction losses while extending seat life
- A lockable handle can prevent accidental actuation
- Standard internal entry blow-out proof stem design
- Full-port design matches ball and seat ports to tube ID for lower pressure drop and less turbulent flow
- Compact design for areas with tight space restrictions

Materials

- PTFE seal
- CF8M 316 stainless steel
- ID polish is Ra 32 minimum
- Fully encapsulated construction produces bubble-tight seal
- Integral ISO 5211 mounting pad
- Optional seals available - 25% carbon-reinforced tetrafluoroethylene, 15% glass-reinforced RTFE, 50% stainless steel-reinforced PTFE, and UHMW



Clamp End

Size		Part Numbers	
mm	inch	Weld End	Clamp End
12	½	BV2CV-050BB-A	BV2CV-050CC-A
20	¾	BV2CV-075BB-A	BV2CV-075CC-A
25	1	BV2CV-100BB-A	BV2CV-100CC-A
38	1½	BV2CV-150BB-A	BV2CV-150CC-A
50	2	BV2CV-200BB-A	BV2CV-200CC-A
65	2½	BV2CV-250BB-A	BV2CV-250CC-A
80	3	BV2CV-300BB-A	BV2CV-300CC-A
100	4	BV2CV-400BB-A	BV2CV-400CC-A

BV3/4 Series Multi-Port Sanitary Stainless Steel Ball Valves

Application

- Hygienic ball valve for food and beverage, and chemical use with ISO mount plate.

Features

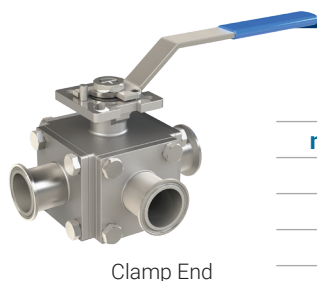
- Full-port design on ½" to 3"
- Reduced port design on 4"
- Blow-out proof stem
- Live-loaded stem packing
- ISO 5211 mounting pad
- Lock-out, tag-out

Materials

- Body, ends, and ball: CF8M stainless
- Seats: virgin PTFE, 15% glass reinforced RTFE, 25% carbon reinforced PTFE, 50% stainless steel reinforced PTFE or UHMW

Maximum Working Pressure

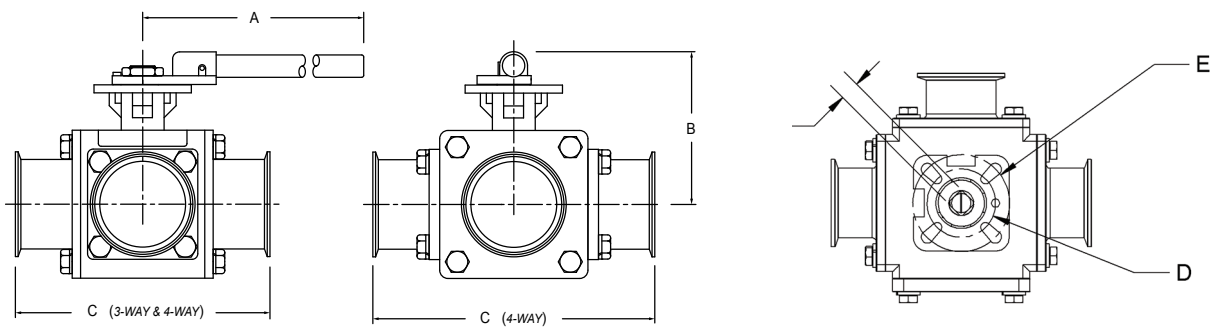
- ½" - 2" 1000 PSI WOG
- 4" 800 PSI WOG



Clamp End

Size		Part Numbers			
mm	inch	Weld End		Clamp End	
		T Port	L Port	T Port	L Port
12	½	BV3SVTF050B-A	BV3SVLF050B-A	BV3SVTF050C-A	BV3SVLF050C-A
20	¾	BV3SVTF075B-A	BV3SVLF075B-A	BV3SVTF075C-A	BV3SVLF075C-A
25	1	BV3SVTF100B-A	BV3SVLF100B-A	BV3SVTF100C-A	BV3SVLF100C-A
38	1½	BV3SVTF150B-A	BV3SVLF150B-A	BV3SVTF150C-A	BV3SVLF150C-A
50	2	BV3SVTF200B-A	BV3SVLF200B-A	BV3SVTF200C-A	BV3SVLF200C-A
65	2½	BV3SVTF250B-A	BV3SVLF250B-A	BV3SVTF250C-A	BV3SVLF250C-A
80	3	BV3SVTF300B-A	BV3SVLF300B-A	BV3SVTF300C-A	BV3SVLF300C-A
100	4	BV3SVTF400B-A	BV3SVLF400B-A	BV3SVTF400C-A	BV3SVLF400C-A

BV3/4 Series Multi-Port Sanitary Stainless Steel Ball Valves



Size		A (mm)	B (mm)	C (mm)	D	E	F (mm)	Weight	L-Port Break Torque (in-lb)	T-Port Break Torque (in-lb)
mm	inch									
12	½	124.46	43.18	116.84	F03	F04	9.0	1.63	65	44
20	¾	127.00	48.25	127.00	F03	F04	9.0	1.95	76	76
25	1	134.62	58.42	152.40	F04	F05	11.0	3.08	171	171
38	1½	241.30	73.66	175.26	F05	F07	14.0	5.71	356	297
50	2	241.30	81.28	190.50	F05	F07	14.0	9.79	553	553
65	2½	457.20	99.06	213.36	F07	F10	17.0	15.26	1114	1114
80	3	464.82	124.46	243.84	F10	F12	22.0	25.58	1875	1400
100	4	464.82	137.16	289.56	F10	F12	22.0	38.73	2241	2050

4-way available upon request

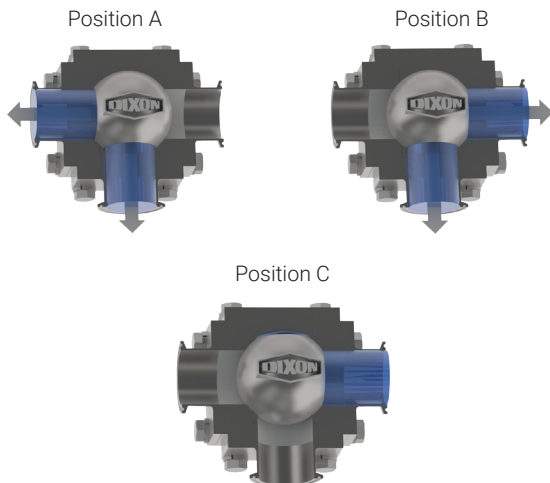
Repair Kits

Size		Part Numbers
mm	inch	
12	½	BV-3SVFRK050
20	¾	BV-3SVFRK075
25	1	BV-3SVFRK100
38	1½	BV-3SVFRK150
50	2	BV-3SVFRK200
65	2½	BV-3SVFRK250
80	3	BV-3SVFRK300
100	4	BV-3SVFRK400

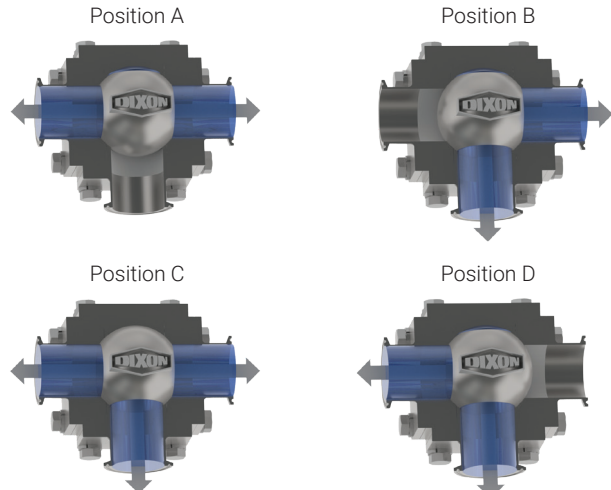


- Kits Contain:
- (2) encapsulated seat small
 - (2) encapsulated seat large
 - (2) body seals
 - (1) thrust washer
 - (1) O-ring
 - (3) stem packings
 - (1) plug (3-way only)

Flow Paths 3-Way L - Port



Flow Paths 3-Way T - Port





Dixon™ Rieger Aseptic Type Valves

Application

- The Rieger aseptic mix-proof valve N7 ensures the reliable separation of process lines for liquid products by means of the SIP capable leakage space as well in-type "piping" as in-type "tank". CIP/SIP valves control the steam inlet and outlet in the leakage space.
- The outstanding aseptic properties are achieved by hermetic sealing from the environment. A temperature survey in the leakage chamber is available upon request. It is important to note, that the full spring force is applied as well in the rest position as when rinsing the valve.

Features

- Design: one-piece valve body, made from solid bar, short design, fewer welding seams, few seals in-product area
- Absolute product protection: safe media separation by leakage space, controlled leakage chamber, both valve disks are liftable separately
- Serviceable maintenance: change of seals without special tools, less standing time, easy cleaning
- Efficiency: long life of the PTFE bellows, low maintenance costs, with brackets for proximity switches on the main actuator

Materials

- In product contact: 1.4404/AISI316L
- Optional: 1.4435/AISI316L
- No product contact: 1.4301/AISI304
- Seals: bellows PTFE
- O-rings: EPDM

Product Contact Seals

- DIN 11850-R2 (DIN 11866 A)
- OD tube (DIN 11866 C)

Temperatures

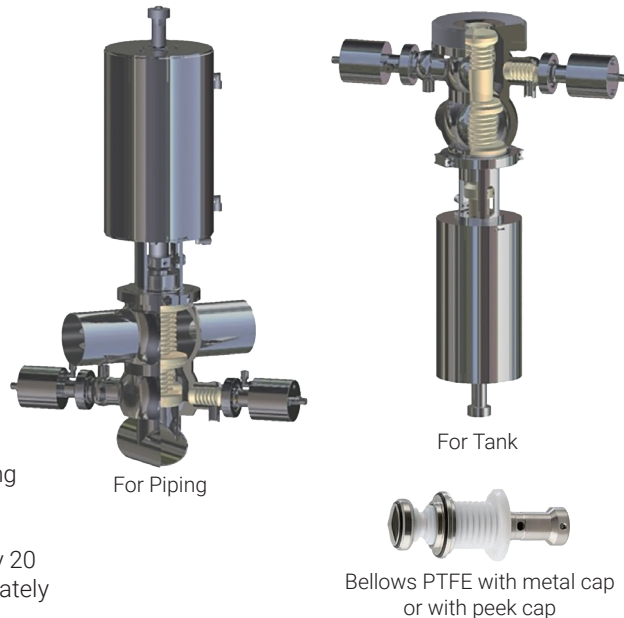
- EPDM operating: 130°C dependent upon operating conditions. Sterilising: 150°C dependent upon operating conditions
- PTFE operating: 121°C short-time (approximately 20 minutes). Sterilising: 135°C short-time (approximately 20 minutes)

Operating Pressure

- Piping: maximum 6 bar
- Tank: maximum 4 bar
- Control air pressure: minimum 6 bar - maximum 4 bar

Surfaces

- In product contact: Ra <= 0.8 µm
- No product contact: Ra <= 1.6 µm



Dixon™ Rieger Aseptic Type Valves

Features

- Solid housing
- No dead spaces
- Fully drainable
- Many built-in positions are possible
- Complete separation from the environment
- No dome or sump in product space
- Change of seals without special tools
- Long-life PTFE bellows
- Low spare parts costs
- OD tube (DIN 11866 C)

Materials

- Product contact surfaces: 316L, 32Ra, optional surface finishes available
- No product contact: 1.4301/AISI304, 68Ra

Sizes

- 12mm to 100mm (½" to 4")

Specifications

- Maximum standard operating temperature: 121°C
- Sterilising temperature: 135°C
- Closure pressure: maximum 87 PSI (6 bar)
- Actuator air pressure: minimum 87 PSI (6 bar), maximum 145 PSI (10 bar)



SSV Series Single Seat Hygienic Valves

Application

- The SSV series single-seat valves offer a true hygienic design to meet your most demanding process applications. The SSV series valves are offered in 316L stainless steel with a variety of body configurations, seat, and stem seal materials to fit your specific needs. This valve series is designed to shut off or divert the flow in your process either remotely by using air or locally using a manual operating device. The rugged design of the actuator and valve body allows the valve to stand up to the harsh environments often found in the sanitary industry.



Features

- Options: manual, actuated (spring return, double acting), control tops
- Surface finish: <32Ra standard
- Air connections: 1/8" FNPT

Materials

- Body: 316L stainless steel
- Actuator: 304 stainless steel
- Manual operating device: 304 stainless steel
- Stem seal: Nitrile Buna, EPDM, FKM
- Seat seal: Nitrile Buna, EPD<. FKM, PTFE

Temperatures

- Temperature range: -45°C to 100°C (-50°F to 212°F)

Sizes

- 25mm to 100mm (1" to 4")

Refer to page 67 for the part number key table

Positioner Type 8692 & 8694 - For Pneumatic Control Angle Valves

Application

- Digital electro-pneumatic positioner for the integrated mounting on process control valves.

Features

- Compact stainless steel design
- Graphic display with backlight
- Easy start-up
- A comprehensive range of additional software functions
- Internal control air channel

Size		Part Numbers
mm	inch	
25 - 38	1 - 1½	CV-AK100-150
50 - 100	2 - 4	CV-AK200-4000





Application

- The process control head is fitted for the controlling of pneumatically operated process valves. The design of the valve body eliminates dead space, a prerequisite for sterile process engineering. When working with high sterilisation temperatures this valve fulfils demands for operational security and reliable function. Used in dairies, food and beverage, pharmaceutical, and chemical industries.

Features

- Valve body made from solid bar
- No dead spaces
- Drainable when mounted in various positions
- High-grade inner surfaces
- No dome or sump in product space
- Change of seals without special tools
- Optimum cleanability
- Modular assembly system
- Low spare part costs
- Complete separation from the environment

Materials

- Product wetted: 1.4404/AISI316L
- Optional: 1.4435/AISI316L
- No product contact: 1.4301/AISI304

Temperatures

Control Valve

- Maximum standard operating temperature: 130°C
- Sterilisation temperature: 150°C short time (approx. 20 mins) dependent upon operating conditions

Aseptic Version

- Maximum temperature: 121°C
- Sterilisation Temperature: 135°C short time (approx. 20 mins) dependent upon operating conditions

Surfaces

- Wetted product surfaces: Ra <= 0.8 µm (32), optional surfaces available
- No product contact: Ra <= 1.6 µm

Product Contact Seals

Control Valve

- O-rings and profile washer: EPDM (other materials upon request)

Aseptic Version

- Seals: bellows PTFE

Standard Operating Pressures

- Standard pressure: maximum 6 bar (87 PSI)
- Actuator air pressure: minimum 6 bar (87 PSI) - maximum 10 bar (145 PSI)
- Controlled air pressure: maximum 10 bar (145 PSI)

Product Contact Seals

- OD - tube (DIN 11866 C) weld optional connections on request



Mini Aseptic Sampling Valve



Application

- The Mini BioCheck sampling valves meet the requirement for minimal product contact surfaces. The mini valves allow minimal sampling quantities fulfilling the same valve features in material and design compared to the larger valves such as DN 10 (½").

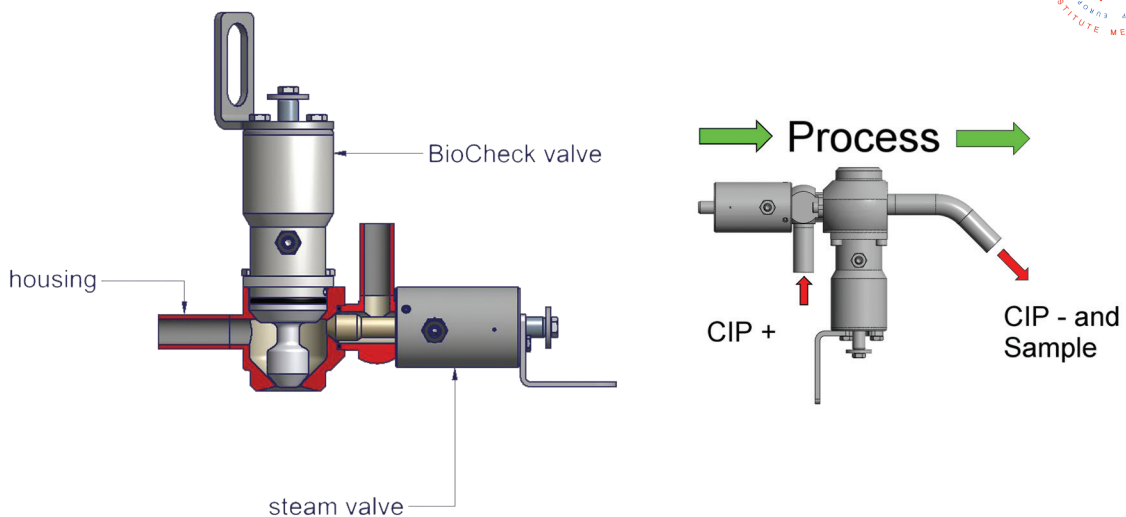
Options

- Pipe, vessel, clamp connection (25mm or 34mm)
- 1 port for sampling
- 2 ports for CIP and/or SIP plus sampling
- DIN 6 (8 x 1mm pipe)
- DIN 8 (10 x 1mm pipe)
- Hand wheel
- Pneumatic (spring to close)
- Pneumatic and lever

Part Numbers	Description
BCSV-11632	Rieger biocheck sampling valve DN6 sanitary 25.4 NC PTFE AISI316L 2 x BW Weld Points
BCSV-RK	Biocheck sampling valve service kit 1 x O-Ring silicon 1 x PTFE bellows



BioCheck Combi Sampling Valves with Steam Valve



Part Number	Description
BCCV-73601	Biocheck combi sampling valve DN10 for Tank NC PTFE/PEEK/AISI 316L

Application

- The 3A sample valve allows easy and safe sampling of liquids from closed systems such as vessels and pipelines. These valves are located in the pharmaceutical, bio-pharmaceutical, biochemical, cosmetic, food, dairy, and beverage markets.

Features

- No dead spaces
- Drainable
- Connections suitable for orbital welding
- Available with single or dual ports
- Hermetically sealed against the environment
- Optimum cleanability
- Change of seals without special tools
- Long life of the PTFE bellows
- Options for Pneumatic Actuator: no lever, with self-closing lever and with lever for open position
- Manual actuator (hand wheel)
- Optional pneumatic actuator
- Tank weld and tube weld options available on request

Materials

- Product contact surfaces: 316L, 0.8µm Ra, optional surface finishes available
- No product contact: 304, 1.6µm Ra
- Product contact seals: PTFE bellows

Specifications

- Closaessure: maximum 116 PSI
- Hand wheel version operating pressure: minimum 87 PSI, maximum 232 PSI
- Controlled air pressure: maximum 145 PSI

Sizes

- 12mm to 100mm (½" to 4")



Single Port Actuated



Single Port



Dual Port

Clamp Valve Size		Weld Port Size		Part Numbers	
mm	inch	mm	inch	Single Port	Dual Port
12	½	6	¼	BSVS-HC050B025	BSVD-HC050B025
		10	⅜	BSVS-HC050B375	BSVD-HC050B375
		12	½	BSVS-HC050B050	BSVD-HC050B050
25	1	6	¼	BSVS-HC100B025	BSVD-HC100B025
		10	⅜	BSVS-HC100B375	BSVD-HC100B375
		12	½	BSVS-HC100B050	BSVD-HC100B050
38	1½	6	¼	BSVS-HC150B025	BSVD-HC150B025
		10	⅜	BSVS-HC150B375	BSVD-HC150B375
		12	½	BSVS-HC150B050	BSVD-HC150B050
50	2	6	¼	BSVS-HC200B025	BSVD-HC200B025
		10	⅜	BSVS-HC200B375	BSVD-HC200B375
		12	½	BSVS-HC200B050	BSVD-HC200B050
65	2½	6	¼	BSVS-HC250B025	BSVD-HC250B025
		10	⅜	BSVS-HC250B375	BSVD-HC250B375
		12	½	BSVS-HC250B050	BSVD-HC250B050
80	3	6	¼	BSVS-HC300B025	BSVD-HC300B025
		10	⅜	BSVS-HC300B375	BSVD-HC300B375
		12	½	BSVS-HC300B050	BSVD-HC300B050
100	4	6	¼	BSVS-HC400B025	BSVD-HC400B025
		10	⅜	BSVS-HC400B375	BSVD-HC400B375
		12	½	BSVS-HC400B050	BSVD-HC400B050

Dixon™ Rieger Safety Valves



Application

- The safety valve prevents excess pressure of gaseous media in pipelines and vessels. The set pressure is always higher than the operating pressure. As soon as the pressure is reached, the valve opens against the force of the spring. The pressure excess is relieved as soon as the pressure is 10% higher than the set pressure.

Features

- The valve body is made from solid bar
- No dead spaces
- Drainable
- Connections suitable for orbital welding
- High-grade inner surfaces
- Change of seals without special tools
- Optimum cleanability
- No sump, no dome
- Low spare part costs
- Safety: closed spring cap
- Modular assembly systems
- Adjustable set pressure
- Passed the EC type examination (module B) according to directive 97/23/EG for steam and gas for the set ranges from 22 PSI to 116 PSI, for 25mm and 38mm (1" and 1½") from 29 PSI to 116 PSI
- 3A versions not available

Materials

- Product contact: 1.4404/AISI316L
- Optional: 1.4435/AISI316L
- No product contact: 1.4301/AISI304

Temperatures

- Maximum standard operating temperature: 130°C
- Sterilisation temperature: 150°C short time (approx. 20 mins)

Surfaces

- Wetted product surfaces: Ra <= 0.8 µm (32)
- No product contact: Ra <= 1.6 µm

Product Contact Seals

- O-rings: EPDM or FKM

Pressure

- Set pressure: 22 PSI to 116 PSI resp. 29 PSI to 116 PSI
- Controlled air pressure: min. 87 PSI max. 145 PSI

Connections

- Weld ends combined with concentrically reduced inch clamp ferrules



SOV Series Manual & Pneumatic Overflow Valve

Application

- Precise control and unparalleled safety with our versatile, dual-operation valves that open when the set pressure is reached, preventing excess pressure in piping or systems. Suitable for liquids, steam, and gas.

Features

- The valve body is made from solid bar
- No dead spaces
- Drainable when mounted in various positions
- High-grade inner surfaces
- Change of seals without special tools
- No sump, no dome
- Clamp union between the valve body and actuator
- Modular assembly system - easy change between hygienic and aseptic type
- Standard seals
- OD tube (DIN 11866 C)

Materials

- Product contact surfaces: 316L, 32Ra
- No product contact: 1.4301/AISI304
- Hygienic EPDM O-rings
- Aseptic PTFE bellows

Sizes

- 25mm to 80mm (1" to 3")

Specifications

- Maximum standard operating temperature EPDM: 130°C
- Maximum standard operating temperature PTFE: 121°C
- Sterilisation temperature EPDM: 149°C
- Sterilisation temperature PTFE: 135°C
- Possible set pressure for O-ring version: 8 PSI to 87 PSI, 22 PSI to 87 PSI
- PTFE bellows version pressure range depends on spring control air pressure: min. 87 PSI, max. 145 PSI



SPR Series Pressure Relief Valves

Application

- Experience unparalleled safety and reliability with our advanced, adjustable relief valves. Designed for diverse applications, these compact valves ensure system protection and stability. The SPR Series Pressure Relief Valves cater to a wide range of markets and industries, including but not limited to chemical processing, pharmaceuticals, water treatment, food and beverage, oil and gas, power generation, and HVAC systems.

Features

- The valve opens when the set pressure is reached to prevent excess pressure in piping or systems
- The valve body is made from solid bar
- Patented squeeze clamp
- Low spare part cost
- Various pressure ranges
- Standard connections clamp, others available on request

Materials

- Product contact surfaces: 316L, 32Ra, other surface finishes available
- No product contact: 304
- Product contact O-ring: EPDM or FKM

Specifications

- Actuation: manual
- Maximum standard operating temperature: 130°C
- Sterilisation temperature EPDM: 149°C
- Pressure ranges: 0-50 PSI, 50-100 PSI, 100-300 PSI



T Body



L Body

Size		Part Numbers	Body Style	Spring Set PSI Range
mm	inch			
38	1½	SPR-TCE1A150	T-Body	0-50
		SPR-TCE2A150		50-100
		SPR-TCE3A150		100-300
		SPR-LCE1A150	L-Body	0-50
		SPR-LCE2A150		50-100
		SPR-LCE3A150		100-300
50	2	SPR-TCE1A200	T-Body	0-50
		SPR-TCE2A200		50-100
		SPR-TCE3A200		100-300
		SPR-LCE1A200	L-Body	0-50
		SPR-LCE2A200		50-100
		SPR-LCE3A200		100-300

EPDM is standard. FKM available upon request.

Stainless Steel Knife Gate Valves

Application

- The Dixon™ VKG series is a robust uni-directional stainless steel knife gate valve suitable for a wide range of industries including water, wastewater, and food and beverage applications. The unique design of the VKG series is perfect for low-pressure applications. Double-row thrust bearings for smooth operation and a hardened chrome plated 316 stainless steel gate with an PTFE seat, provides the VKG series with the strength and diversity to handle a multitude of applications.

Features

- Size range DN50 - DN1200
- Special replaceable seat
- Roller bearings in stainless steel housing on all sizes
- Fully lugged to suit AS4087 Class 16, Table D
- Stainless steel stem protection tube
- Gearbox included on DN450 and above
- Stainless steel safety guards
- Special adjustable gate guide ensures no leakage
- PTFE seat as standard
- Temperature range up to 200°C (depending on seat)

Dixon Brand Manual (hand wheel operated)

- Include stainless steel gate guard and stainless steel stem cover as standard

Dixon Brand Actuated (double acting)

- Includes 24VDC solenoid valve, proximity switches and air filter regulator as standard

Pressure Rating

- DN50 to DN250 - 10 Bar (150 PSI)
- DN300 to DN450 - 7 Bar (90 PSI)
- DN500 to DN600 - 4 Bar (60 PSI)

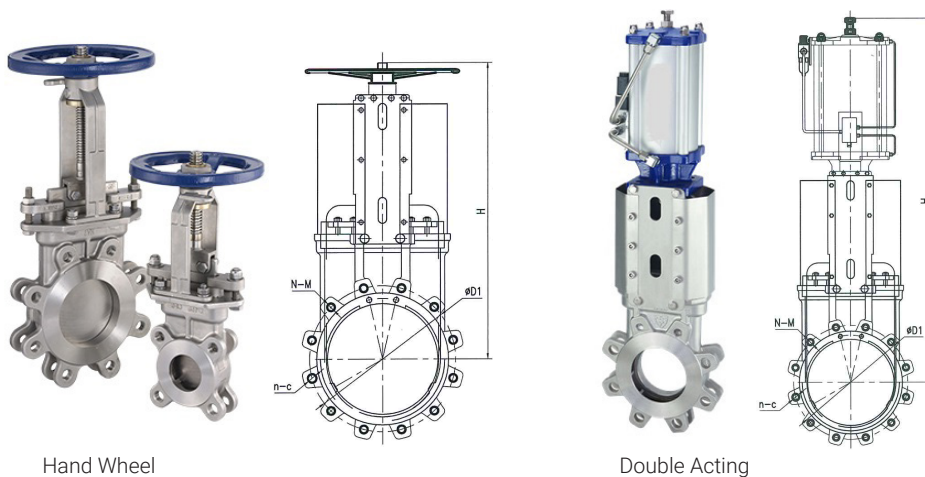
Maximum Temperature Rating

- 180°C PTFE (standard)
- 200°C Viton (optional)
- 120°C EPDM (optional)
- 90°C NBR (optional)
- 200°C Metal (selected sizes)

Approvals

- MSS SP-81

Size		Part Numbers	
mm	inch	Hand Wheel	Double Acting Lugged T/D
50	2	VKG-050-RS-SS	-
65	2½	VKG-065-RS-SS	-
80	3	VKG-080-RS-SS	VKG-080-SS-ACT
100	4	VKG-100-RS-SS	VKG-100-SS-ACT
150	6	VKG-150-RS-SS	VKG-150-SS-ACT
200	8	VKG-200-RS-SS	VKG-200-SS-ACT
250	10	VKG-250-RS-SS	VKG-250-SS-ACT
300	12	VKG-300-RS-SS	VKG-300-SS-ACT



Hand Wheel

Double Acting

DN	L	Ød	ØD1	D2	N-M	n-c	H	
							Hand Wheel	Double Acting
80	51	90	146	122	2-M16	2-Ø18	365	-
100	51	105	178	154	2-M16	2-Ø18	410	610
150	57	158	235	211	2-M16	6-Ø18	505	760
200	70	210	292	266	2-M16	6-Ø18	615	950
250	70	210	356	319	2-M20	6-Ø22	740	1135





Tank Accessories

Providing tank accessories to enhance your winemaking operations, our range includes sight glasses and spray balls, designed to ensure optimal visibility and efficient cleaning of your tanks.



Sight Glass - Stainless Steel

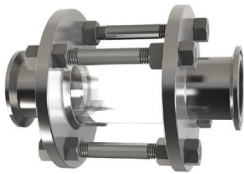
Weld - EPDM



Weld

Size		Part Numbers	Working Pressure (PSI)
mm	inch		
25.4	1	B54EBB-R100	145
38.1	1½	B54EBB-R150	145
50.8	2	B54EBB-R200	145
63.5	2½	B54EBB-R250	120
76.2	3	B54EBB-R300	120
101.6	4	B54EBB-R400	95
152.4	6	B54EBB-R600	80

Clamp - Buna N



Clamp

Size		Part Numbers	Working Pressure (PSI)
mm	inch		
25.4	1	B54BMP-R100	145
38.1	1½	B54BMP-R150	145
50.8	2	B54BMP-R200	145
63.5	2½	B54BMP-R250	120
76.2	3	B54BMP-R300	120
101.6	4	B54BMP-R400	95
152.4	6	B54BMP-R600	80

Replacement Glass - Borosilicate



Size		Part Numbers
mm	inch	
25.4	1	B54G-P100
38.1	1½	B54G-P150
50.8	2	B54G-P200
63.5	2½	B54G-P250
76.2	3	B54G-P300
101.6	4	B54G-P400

Sight Glass Lens Dimensions

Size		OD (+/- 1/5mm)	ID (+/- 1.5mm)	Length (+/- 1.5mm)
mm	inch			
25.4	1	31	22	63.5
38.1	1 1/2	44	35	63.5
50.8	2	58	48	63.5
63.5	2 1/2	71	59	71
76.2	3	88	72	100
101.6	4	116	97	100

Compact Sight Glasses

Application

- Used widely in the food, dairy and beverage sanitary processes to view products and fluids. This design is perfect for hoses.

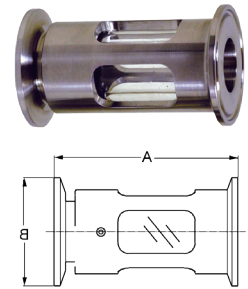
Features

- Easier to clean than bolted styles
- Less cost to repair than bolted styles
- Clamp connections standard
- Sizes available: 25mm (1"), 38mm (1 ½), 50mm (2"), 80mm (3")
- Maximum Temperature: 95°C
- Maximum Pressure: 6.9 bar

Material

- Body: 316L stainless steel
- Sight Glass: borosilicate glass
- Gasket: Nitrile buna rubber

Size		Part Numbers	A (mm)	B (mm)
mm	inch			
25.4	1	B54BMPS-R100	85.73	50.30
38.1	1½	B54BMPS-R150	92.46	50.30
50.8	2	B54BMPS-R200	97.28	64.00
76.2	3	B54BMPS-R300	104.90	96.52
101.6	4	B54BMPS-R400	110.24	118.87



Kits and Replacement Parts

Size		Part Numbers	
mm	inch	Seal Kit	Replacement Glass
25.4	1	B54BMPS-SK100	B54BMPS-GL100
38.1	1½	B54BMPS-SK150	B54BMPS-GL150
50.8	2	B54BMPS-SK200	B54BMPS-GL200
76.2	3	B54BMPS-SK300	B54BMPS-GL300
101.6	4	B54BMPS-SK400	B54BMPS-GL400



Clamp Spray Ball - Rotating

Specifications

- Ideal for cleaning all types of tanks and vessels

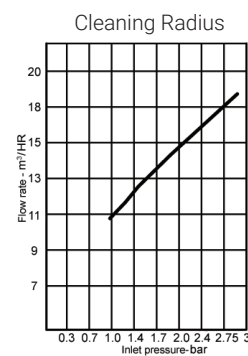
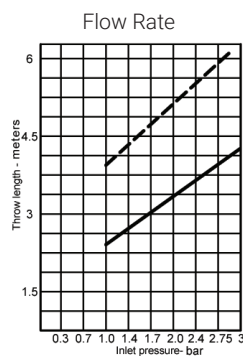
Material

- Body: 316L stainless steel

Features

- Stainless steel ball bearings eliminate rust
- Cleaning solution lubricates unit
- Mirror-like finish (OD)
- Spray pattern 360°

Size		Part Number	A (mm)	B (mm)	C (mm)
mm	inch				
38.1	1½	SRH360CMP-R150	138.9	52.5	38.1



Spray Balls

Specifications

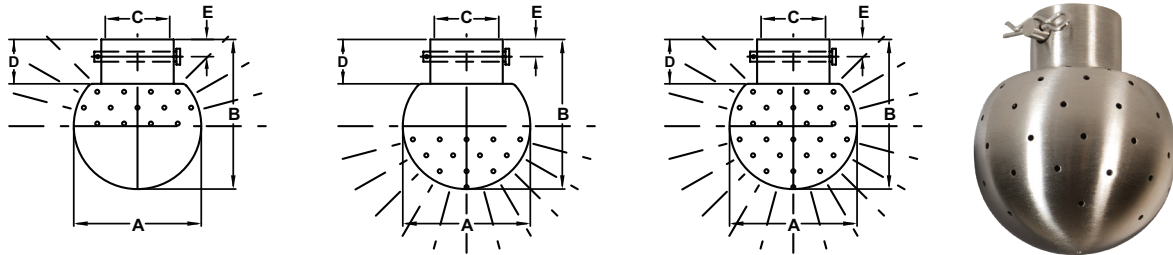
- Typical use is in food and beverage industries for cleaning storage tanks

Features

- Heavy stainless steel construction provides longer life
- Various spray patterns available
- Stationary, designed to be mounted to a tube or pipe
- 2mm spray holes

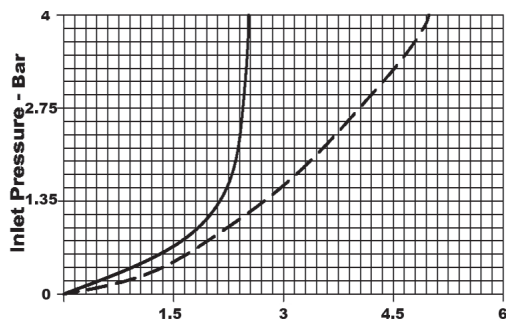
- Body: 316L stainless steel

Material

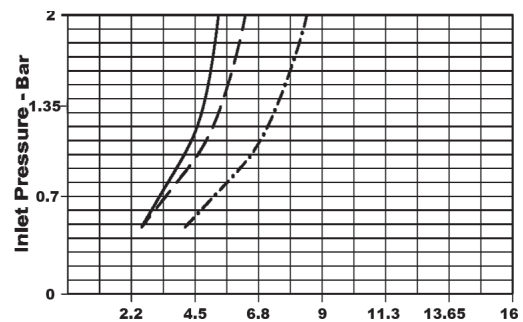


Size		Part Numbers	Pin Length	Spray Pattern	Dimensions					Pin Size
mm	inch				A	B	C	D	E	
25.4	1	STC-360-R100	1.47	360°	90	75	25	25	11	5.7
38.1	1½	STC-360-R150	1.95	360°	90	75	38	25	11	5.7
25.4	1	STC-360-R100	1.47	180° Bottom	90	75	25	25	11	5.7
38.1	1½	STC-360-R150	1.95	180° Bottom	90	75	38	25	11	5.7
25.4	1	STC-360-R100	1.47	180° Top	90	75	25	25	11	5.7
38.1	1½	STC-360-R150	1.95	180° Top	90	75	38	25	11	5.7

Cleaning Radius



Flow Rate

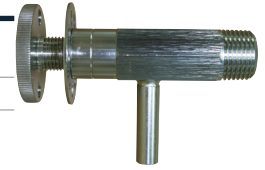


BSP Lockable Sample Tap

Material

- 316 stainless steel

Size		Part Numbers	
mm	inch	Sample Tap	Service Kit
12.7	½	BSVWBS-R50	BSVWBS-RK50



Air & Vacuum Relief Tank Vent Valve

Application

- The valve relieves pressure as the fluid level rises while filling a tank and relieves the vacuum as the fluid level drops while emptying a tank.

Features

- 50mm and 80mm (2" and 3") clamp connections on the same valve
- Dome helps in preventing external contamination
- Light-weight, robust PVC and 304 stainless steel construction
- Can use any clamp gasket

Materials

- 304 stainless steel
- PVC

Specifications

- Flow rate: 110m³/Hr
- Vacuum break: 0.1 PSI
- Pressure relief: 0.1 PSI

Size		Part Number
mm	inch	
50 & 80	2 & 3	TVPC200-300



Air & Vacuum Relief Tank Vent Valve - Stainless Steel

Application

- The valve relieves pressure as the fluid level rises while filling a tank and relieves the vacuum as the fluid level drops while emptying a tank.

Features

- Seals under equal pressure
- A stainless steel screen surrounds the entire vacuum and pressure flow area
- ¼" FNPT connection for gas inlet, plugs also supplied

Specifications

- Vacuum break: 2" water column 0.1 PSI
- Pressure relief: 22" water column 0.8 PSI
- Maximum temperature and pressure rating: 3 PSI @ 21°C
- Tank fill and evacuation rate: 250 GPM max

Materials

- 304 stainless steel
- EPDM elastomer

Size		Part Numbers	Dimension A (inch)
mm	inch		
50	2	TVSEC-G200	2.52
80	3	TVSEC-G300	3.58
100	4	TVSEC-G400	4.68



- These valves have been designed as a secondary pressure and vacuum relief vent. Always open the upper manhole whenever the product is being transferred in excess of 250 gallons per minute





Camlocks

Offering a range of camlocks, our camlock fittings provide secure connections with quick and easy coupling, ensuring reliability across various applications in your winery operations.



Dixon™ Standard Camlocks

Application

- The Dixon™ standard camlock, reliable quick-connect coupling for use with hose, pipe, tubing, and tanks conveying a wide variety of liquids, dry bulk materials, and vapours.

Materials

- Body: cast aluminium equivalent to ASTM A383 or stainless steel CF8M (316 Equivalent)
- Levers: stainless steel
- Pins: zinc plated steel
- Pull Rings: zinc plated steel
- Seal: Nitrile Buna-N rubber

Specifications

- Interchangeable with all products produced to commercial description A-A-59326D

Connections

- Camlock adaptor and coupler
- BSP female and male
- Standard hose tail



Size (mm)	Working Pressure (psi)	Part Numbers					
		Type A	Type B	Type C	Type D	Type E	Type F
		Adaptor x Female BSP	Coupler x Male BSP	Coupler x Hose Tail	Coupler x Female BSP	Adaptor x Hose Tail	Adaptor x Male BSP
20	250	ESS075A	ESS075B	ESS075C	ESS075D	ESS075E	ESS075F
25	250	ESS100A	ESS100B	ESS100C	ESS100D	ESS100E	ESS100F
32	250	ESS125A	ESS125B	ESS125C	ESS125D	ESS125E	ESS125F
40	250	ESS150A	ESS150B	ESS150C	ESS150D	ESS150E	ESS150F
50	250	ESS200A	ESS200B	ESS200C	ESS200D	ESS200E	ESS200F
65	150	ESS250A	ESS250B	ESS250C	ESS250D	ESS250E	ESS250F
75	125	ESS300A	ESS300B	ESS300C	ESS300D	ESS300E	ESS300F
100	100	ESS400A	ESS400B	ESS400C	ESS400D	ESS400E	ESS400F



Dust Cap



Dust Plug

Size (mm)	Working Pressure (psi)	Part Numbers	
		Type DC - Dust Cap	Type DP - Dust Plug
20	250	ESS075DC	ESS075DP
25	250	ESS100DC	ESS100DP
32	250	ESS125DC	ESS125DP
40	250	ESS150DC	ESS150DP
50	250	ESS200DC	ESS200DP
65	150	ESS250DC	ESS250DP
75	125	ESS300DC	ESS300DP
100	100	ESS400DC	ESS400DP



- Under no circumstances should camlock couplings be used in compressed air or steam applications
- Dust caps and dust plugs are not to be used in any pressure applications for safety and environmental reasons

Butt Weld Tube End Adaptors and Couplers

Material

- Body: 316 stainless steel

Size		Part Numbers	
mm	inch	Adaptors	Boss-Lock™ Couplers
25.4	1	RE100BT	RC100BT
38.1	1½	RE150BT	RC150BT
50.8	2	RE200BT	RC200BT
76.2	3	RE300BT	RC300BT

Designed to be butt welded to standard sanitary tubing



Adaptor



Coupler



Providing you with a more **hygienic, secure and safe solution** for your hose assemblies.

Read the benefits of crimped fittings on wine hose.



Benefits of a Distributor Account

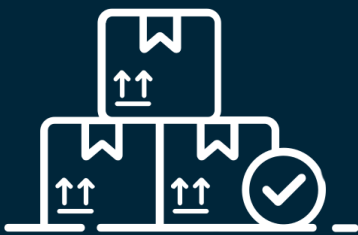


SCAN to sign up for an online Distributor Account



Check **Pricing**

Check **Stock Availability**



Bulk Order Upload

Place Your Order



View **Orders & Invoices**

CONTACT LIST

Sales Team

Aaron Hellowell

Territory Manager
South Australia / Northern Territory
ahellowell@dixonvalve.com.au
0408 797 500

Paul Wood

Territory Manager
Queensland
pwood@dixonvalve.com.au
0451 669 687

Michael Bennecke

Territory Manager
Western Australia
mbennecke@dixonvalve.com.au
0417 823 660

Paul Christie

Territory Manager
Victoria / Tasmania
pchristie@dixonvalve.com.au
0414 779 653

Ray Collyer

Territory Manager
New South Wales
rcollyer@dixonvalve.com.au
0404 204 579

Peter Crossley

Territory Manager
New Zealand
pcrossley@dixonvalve.com.au
0422 729 739



The Right Connection®

Dixon (Asia Pacific) Pty Ltd

170 Francis Road
Wingfield SA 5013

1300 134 651

dixonvalve.com.au

Adelaide, South Australia

(Head Office)

170 Francis Road
Wingfield SA 5013

Brisbane, Queensland

6 Union Circuit
Yatala QLD 4207

Mackay, Queensland

38 John Vella Drive
Paget QLD 4740

Melbourne, Victoria

13 Commercial Drive
Dandenong VIC 3175

Perth, Western Australia

19 Baile Road
Canning Vale WA 6155

Sydney, New South Wales

15 Watsford Road
Campbelltown NSW 2560