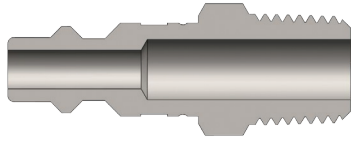


**DF-Series Industrial Interchange Nipple**



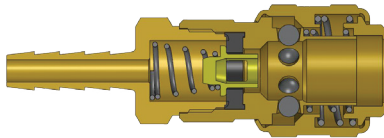
Male Thread



Body (inch)	Part No.	Thread (inch)	Body Material	Weight (kg)	Pkg Qty		Price \$ (ea)
					Bag	Box	
1/4	D2M1	1/8 - 27 NPTF	Steel	0.02	10	100	3.82
1/4	D2M1-B	1/8 - 27 NPTF	Brass	0.02	10	100	4.09
1/4	D2M1-S	1/8 - 27 NPTF	303 SS	0.02	10	100	31.07
1/4	D2M2	1/4 - 18 NPTF	Steel	0.02	10	100	2.92
1/4	D2M2-B	1/4 - 18 NPTF	Brass	0.02	10	100	4.03
1/4	D2M2-S	1/4 - 18 NPTF	303 SS	0.02	10	100	8.08
1/4	D2BM2	1/4 - 19 BSPT	Steel	0.02	10	100	14.98
1/4	D2M3	3/8 - 18 NPTF	Steel	0.02	10	100	4.74
1/4	D2M3-B	3/8 - 18 NPTF	Brass	0.03	10	100	6.53
1/4	D2M3-S	3/8 - 18 NPTF	303 SS	0.04	10	100	17.82
1/4	D2BM3	3/8 - 19 BSPT	Steel	0.03	10	100	15.08
3/8	D3M2	1/4 - 18 NPTF	Steel	0.04	10	50	4.42
3/8	D3M3	3/8 - 18 NPTF	Steel	0.04	10	50	4.59
3/8	D3M3-B	3/8 - 18 NPTF	Brass	0.04	10	50	10.47
3/8	D3M3-S	3/8 - 18 NPTF	303 SS	0.04	10	50	14.50
3/8	D3BM3	3/8 - 19 BSPT	Steel	0.04	10	50	15.14
1/2	D4M2	1/4 - 18 NPTF	Steel	0.06	10	50	9.14
1/2	D4M3	3/8 - 18 NPTF	Steel	0.07	10	50	6.17
1/2	D4M4	1/2 - 14 NPTF	Steel	0.07	10	50	16.27
1/2	D4M4-B	1/2 - 14 NPTF	Brass	0.08	10	50	13.46
1/2	D4M4-S	1/2 - 14 NPTF	303 SS	0.07	10	50	24.59
1/2	D4BM4	1/2 - 14 BSPT	Steel	0.07	10	50	15.22
1/2	D4M6	3/4 - 14 NPTF	Steel	0.11	10	50	12.99
1/2	D4M6-B	3/4 - 14 NPTF	Brass	0.11	10	50	21.50
3/4	D6M4	1/2 - 14 NPTF	Steel	0.10	5	20	36.34
3/4	D6M6	3/4 - 14 NPTF	Steel	0.11	5	20	27.67
3/4	D6M8	1 - 11 1/2 NPTF	Steel	0.12	5	20	51.90

Price Group: PC  
AN01

**D-Series Automatic Industrial Interchange Safety Coupler**



Standard Hose Barb



Body Size (inch)	Part No.	Hose ID (inch)	Body Material	Weight (kg)	Pkg Qty		Price \$ (ea)
					Bag	Box	
1/4	2DS2-B	1/4	Brass	0.12	10	100	35.37
1/4	2DS2-S	1/4	303 SS	0.12	10	100	85.19
1/4	2DS3-B	3/8	Brass	0.12	10	100	31.81
1/4	2DS3-S	3/8	303 SS	0.13	10	100	95.77
3/8	3DS2-B	1/4	Brass	0.17	10	50	47.36
3/8	3DS3-B	3/8	Brass	0.18	10	50	45.06
3/8	3DS3-S	3/8	303 SS	0.18	10	50	156.05
3/8	3DS4-B	1/2	Brass	0.19	10	50	42.29
1/2	4DS3-B	3/8	Brass	0.25	5	30	49.09
1/2	4DS4-B	1/2	Brass	0.27	5	30	45.78
1/2	4DS4-S	1/2	303 SS	0.27	5	30	187.67
1/2	4DS6-B	3/4	Brass	0.30	5	30	51.24
3/4	6DS4-B	1/2	Brass	0.41	-	20	154.98
3/4	6DS6-B	3/4	Brass	0.42	-	20	153.43
3/4	6DS8-B	1	Brass	0.47	-	20	214.86

Price Group: PC  
AN01

FOR TECHNICAL GUIDELINES PLEASE REFER TO PAGE 260

