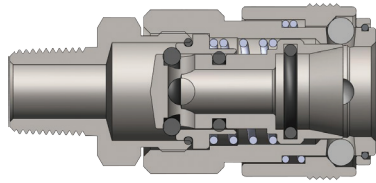
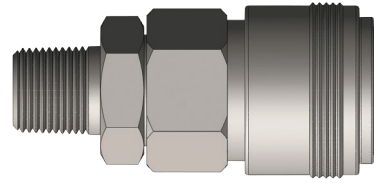


## NK-Series Nitto Interchange Coupler



Male Thread

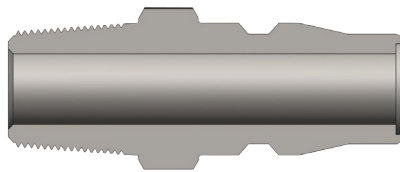


Body Size (inch)	Part No.	Threads (inch)	Material	Length (mm)	Max OD (mm)	Hex Size (inch)	Weight (kg)	Bag Qty	Price \$ (ea)
¼	20SM	¼ - 19 BSPT	Steel	50.0	25.0	19	0.08	10	21.46
¾	30SM	¾ - 14 BSPT	Steel	50.0	25.0	19	0.09	10	22.41
½	40SM	½ - 14 BSPT	Steel	52.0	25.0	21	0.09	5	24.69

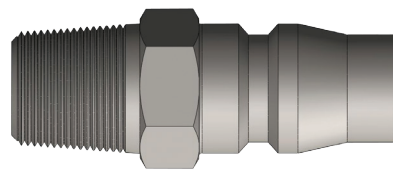
Price Group: PC

AP10

## NK-Series Nitto Interchange Nipple



Male Thread

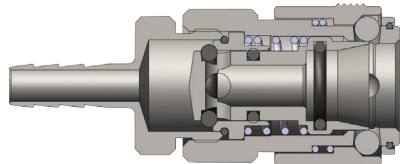


Body Size (inch)	Part No.	Threads (inch)	Material	Length (mm)	Hex Size (inch)	Weight (kg)	Bag Qty	Price \$ (ea)
¼	20PM	¼ - 19 BSPT	Steel	41.0	14	0.03	10	3.76
¾	30PM	¾ - 14 BSPT	Steel	42.0	14	0.04	10	4.70
½	40PM	½ - 14 BSPT	Steel	43.0	19	0.05	5	6.25

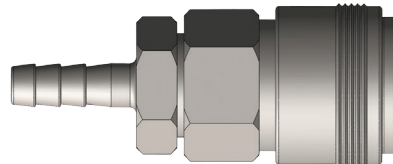
Price Group: PC

AP10

## NK-Series Nitto Interchange Coupler



Hose Barb

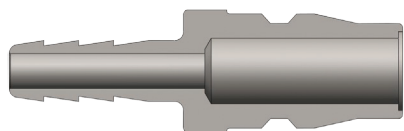


Body Size (inch)	Part No.	Threads (inch)	Material	Length (mm)	Max OD (mm)	Hex Size (inch)	Weight (kg)	Bag Qty	Price \$ (ea)
¼	20SH	¼	Steel	67.0	25.0	19	0.08	10	22.43
¾	30SH	¾	Steel	71.0	25.0	19	0.08	10	25.00
½	40SH	½	Steel	71.0	25.0	19	0.09	5	24.26

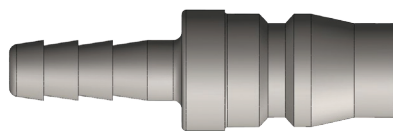
Price Group: PC

AP10

## NK-Series Nitto Interchange Nipple



Hose Barb



Body Size (inch)	Part No.	Threads (inch)	Material	Length (mm)	Max OD (mm)	Hex Size (inch)	Weight (kg)	Bag Qty	Price \$ (ea)
¼	20PH	¼	Steel	57.0	16.0	-	0.03	10	3.67
¾	30PH	¾	Steel	61.0	18.0	-	0.03	10	3.94
½	40PH	½	Steel	65.0	18.0	-	0.03	5	5.42

Price Group: PC

AP10

FOR TECHNICAL GUIDELINES PLEASE REFER TO PAGE 258



1300 134 651  
dixonvalve.com.au

All prices exclude GST.  
ADPL718