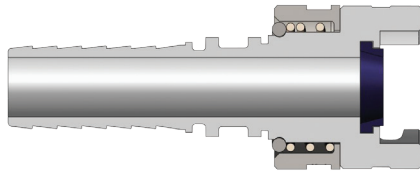
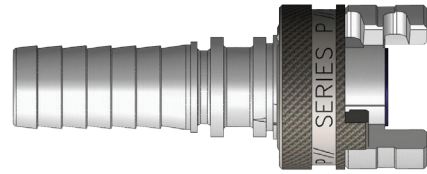


## P-Series Dual Lock Coupler



Hose Barb



P-Series Thor Interchange Coupler												
Body Size (inch)	Part No.	Hose ID (inch)	Material	Length		Maximum OD		Hex Size (inch)	Weight (kg)	Pkg Qty		Price \$ (ea)
				inch	mm	inch	mm			Bag	Box	
½	4PS3	⅜	Steel	3.53	89.7	1.55	39.4	-	0.22	-	25	48.01
½	4PS4	½	Steel	3.95	100.3	1.55	39.4	-	0.24	-	25	40.22
½	4PS4-B	½	Brass	3.95	100.3	1.55	39.4	-	0.26	-	25	74.82
½	4PS6	¾	Steel	3.95	100.3	1.55	39.4	-	0.25	-	25	39.43
½	4PS6-9	¾	Steel/Tefcoat	3.95	100.3	1.55	39.4	-	0.25	-	25	138.33
½	4PS6-B	¾	Brass	3.95	100.3	1.55	39.4	-	0.26	-	25	69.99
½	4PS8	1	Steel	6.06	153.9	1.55	39.4	-	0.43	-	25	80.52
½	4PS8-B	1	Brass	6.06	153.9	1.55	39.4	-	0.44	-	25	122.20

Price Group: PC

AD07

## P-Series Dual Lock Replacement Seals

P-Series Thor Interchange Replacement Seals							
Body Size (inch)	Part No.	Coupler Style	Material	Seal Kit Contents	Pkg Qty		Price \$ (ea)
					Bag	Box	
½	4P-SKIT	All	Nitrile	Sealing Gasket	25	500	0.30
½	F-4P-SKIT	All	FKM	Sealing Gasket	25	500	2.86

Price Group: PC

AD07



Locking Key		
Part No.		Price \$ (ea)
4P-CLIP		POR

Price Group: PC

AD07

Fits couplings with locking sleeve.

## Dual Lock Coupling with Ferrule

<b>Application:</b>	Used on large pneumatic hand-tools such as hammers, chippers, cable winders, air impact wrenches. Also widely used in refineries to convey air, water and nitrogen, for military applications such as breathing air, fresh air systems and oil rigs for compression jacks and hand tools.
<b>Materials:</b>	Zinc Coated Coupling with Plated Steel Ferrule. Also available in Stainless Steel
<b>Pressure:</b>	300 PSI WP



Hose Size (inch)	Hose OD (mm)		Part No.	Price \$ (ea)
	From:	To:		
½	21	26	4PS4-WF43	64.37
¾	29	34	4PS6-WF63	94.48

Price Group: PC

AD07

FOR TECHNICAL GUIDELINES PLEASE REFER TO PAGE 255



1300 134 651  
dixonvalve.com.au

All prices exclude GST.  
ADPL718