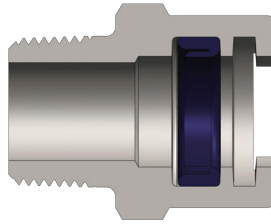
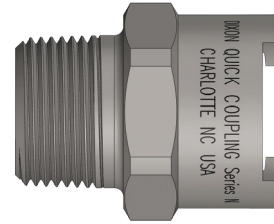


N-Series Dix-Lock™ Coupler



Male Thread



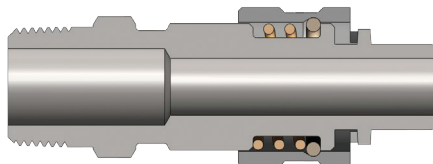
N-Series Bowes Interchange Coupler

Body Size (inch)	Part No.	Threads (inch)	Material	Length		Maximum OD		Hex Size (inch)	Weight (kg)	Pkg Qty		Price \$ (ea)
				inch	mm	inch	mm			Bag	Box	
3/8	3NM4	1/2 - 14 NPTM	Steel	1.72	43.6	1.37	34.8	1 3/16	0.09	-	40	54.40
3/8	3NBM4	1/2 - 14 BSPTM	Steel	1.72	43.6	1.37	34.8	1 3/16	0.09	-	40	101.68
1/2	4NM3	3/8 - 18 NPTM	Steel	1.77	45.0	1.54	39.1	1 1/8	0.14	-	25	51.35
1/2	4NM3-B	3/8 - 18 NPTM	Brass	1.77	45.0	1.54	39.1	1 1/8	0.15	-	25	39.62
1/2	4NBM3	3/8 - 19 BSPTM	Steel	1.77	45.0	1.54	39.1	1 1/8	0.14	-	25	35.79
1/2	4NM4	1/2 - 14 NPTM	Steel	1.77	45.0	1.54	39.1	1 1/8	0.15	-	25	14.36
1/2	4NM4-B	1/2 - 14 NPTM	Brass	1.77	45.0	1.54	39.1	1 1/8	0.16	-	25	23.59
1/2	4NBM4	1/2 - 14 BSPTM	Steel	1.77	45.0	1.54	39.1	1 1/8	0.15	-	25	36.44
1/2	4NBM4-B	1/2 - 14 BSPTM	Brass	1.77	45.0	1.54	39.1	1 1/8	0.16	-	25	44.25
1/2	4NM6	3/4 - 14 NPTM	Steel	1.77	45.0	1.54	39.1	1 1/8	0.15	-	25	15.62
1/2	4NM6-B	3/4 - 14 NPTM	Brass	1.77	45.0	1.54	39.1	1 1/8	0.17	-	25	27.02
1/2	4NM6-S	3/4 - 14 NPTM	303 SS	1.77	45.0	1.54	39.1	1 1/8	0.16	-	25	106.18
1/2	4NBM6	3/4 - 14 BSPTM	Steel	1.77	45.0	1.54	39.1	1 1/8	0.15	-	25	41.34
1/2	4NBM6-B	3/4 - 14 BSPTM	Brass	1.77	45.0	1.54	39.1	1 1/8	0.17	-	25	44.44
1/2	4NM8	1 - 11 1/2 NPTM	Steel	1.84	46.8	1.73	43.9	1 1/2	0.20	-	25	45.76
1/2	4NM8-B	1 - 11 1/2 NPTM	Brass	1.84	46.8	1.73	43.9	1 1/2	0.22	-	25	54.81
1/2	4NBM8	1 - 11 BSPTM	Steel	1.84	46.8	1.73	43.9	1 1/2	0.20	-	25	39.75
1/2	4NBM8-B	1 - 11 BSPTM	Brass	1.84	46.8	1.73	43.9	1 1/2	0.22	-	25	49.80

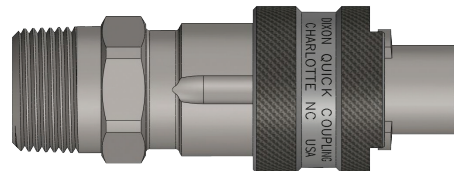
Price Group: PC

AD07

N-Series Dix-Lock™ Nipple



Male Thread



N-Series Bowes Interchange Nipple

Body Size (inch)	Part No.	Threads (inch)	Material	Length		Maximum OD		Hex Size (inch)	Weight (kg)	Pkg Qty		Price \$ (ea)
				inch	mm	inch	mm			Bag	Box	
3/8	N3M4	1/2 - 14 NPTM	Steel	1.72	43.6	1.37	34.8	1 3/16	0.18	-	40	96.76
3/8	N3BM4	1/2 - 14 BSPTM	Steel	1.72	43.6	1.37	34.8	1 3/16	0.18	-	40	70.70
1/2	N4M3	3/8 - 18 NPTM	Steel	3.65	92.7	1.40	35.6	1 1/8	0.24	-	25	60.29
1/2	N4M3-B	3/8 - 18 NPTM	Brass	3.65	92.7	1.40	35.6	1 1/8	0.25	-	25	78.78
1/2	N4BM3	3/8 - 19 BSPTM	Steel	3.65	92.7	1.40	35.6	1 1/8	0.24	-	25	54.50
1/2	N4M4	1/2 - 14 NPTM	Steel	3.65	92.7	1.40	35.6	1 1/8	0.27	-	25	49.17
1/2	N4M4-B	1/2 - 14 NPTM	Brass	3.65	92.7	1.40	35.6	1 1/8	0.28	-	25	58.25
1/2	N4BM4	1/2 - 14 BSPTM	Steel	3.65	92.7	1.40	35.6	1 1/8	0.27	-	25	61.28
1/2	N4BM4-B	1/2 - 14 BSPTM	Brass	3.65	92.7	1.40	35.6	1 1/8	0.29	-	25	73.18
1/2	N4M6	3/4 - 14 NPTM	Steel	3.74	95.0	1.40	35.6	1 1/8	0.27	-	25	41.50
1/2	N4M6-B	3/4 - 14 NPTM	Brass	3.74	95.0	1.40	35.6	1 1/8	0.29	-	25	71.89
1/2	N4M6-S	3/4 - 14 NPTM	303 SS	3.74	95.0	1.40	35.6	1 1/8	0.28	-	25	125.41
1/2	N4BM6	3/4 - 14 BSPTM	Steel	3.74	95.0	1.40	35.6	1 1/8	0.27	-	25	63.35
1/2	N4BM6-B	3/4 - 14 BSPTM	Brass	3.74	95.0	1.40	35.6	1 1/8	0.29	-	25	84.97
1/2	N4M8	1 - 11 1/2 NPTM	Steel	3.78	95.9	1.54	39.1	1 1/8	0.32	-	25	98.06
1/2	N4M8-B	1 - 11 1/2 NPTM	Brass	3.78	95.9	1.54	39.1	1 1/8	0.34	-	25	106.46
1/2	N4BM8	1 - 11 BSPTM	Steel	3.78	95.9	1.54	39.1	1 1/8	0.32	-	25	63.26
1/2	N4BM8-B	1 - 11 BSPTM	Brass	3.78	95.9	1.54	39.1	1 1/8	0.34	-	25	86.86

Price Group: PC

AD07

FOR TECHNICAL GUIDELINES PLEASE REFER TO PAGE 249



1300 134 651
dixonvalve.com.au

All prices exclude GST.
ADPL718