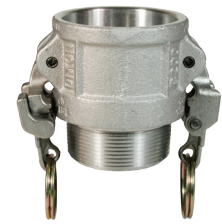


EZ Boss-Lock™ Dixon™ Type B

Female Coupler x Male Thread									
Size (mm)	Max WP* PSI	Stainless Steel BSP		Stainless Steel NPT		Aluminium NPT		Brass NPT	
		Part No.	Price \$	Part No.	Price \$	Part No.	Price \$	Part No.	Price \$
15	150	RB050EZA	207.84	RB050EZ	175.89	-	-	-	-
20	250	RB075EZA	133.90	RB075EZ	100.86	-	-	BB075EZ	105.13
25	250	RB100EZA	136.21	RB100EZ	151.75	-	-	BB100EZ	103.95
32	250	RB125EZA	245.51	RB125EZ	235.72	-	-	-	-
40	250	RB150EZA	249.68	RB150EZ	180.51	AB150EZ	107.20	BB150EZ	210.23
50	250	RB200EZA	358.76	RB200EZ	161.90	AB200EZ	111.23	BB200EZ	272.03
75	125	RB300EZA	522.82	RB300EZ	305.45	AB300EZ	162.66	BB300EZ	368.41
100	100	RB400EZA	825.67	RB400EZ	450.31	AB400EZ	202.50	BB400EZ	620.64
150	75	RB600EZA	1058.33	RB600EZ	922.84	-	-	-	-

Price Group: SD
AL03



B

EZ Boss-Lock™ Dixon™ Type C

Female Coupler x Hose Tail							
Size (mm)	Max WP* PSI	Stainless Steel		Aluminium		Brass	
		Part No.	Price \$	Part No.	Price \$	Part No.	Price \$
15	150	RC050EZ	169.56	-	-	-	-
20	250	RC075EZ	114.06	-	-	BC075EZ	107.59
25	250	RC100CEZ	150.16	AC100EZ	103.13	BC100EZ	182.10
32	250	RC125EZ	261.69	-	-	-	-
40	250	RC150EZ	241.07	AC150EZ	160.15	BC150EZ	196.62
50	250	RC200EZ	285.30	AC200EZ	152.54	BC200EZ	236.45
65	150	-	-	AC250EZ	120.27	-	-
75	125	RC300EZ	401.10	AC300EZ	113.96	BC300EZ	370.65
100	100	RC400EZ	549.27	AC400EZ	280.31	BC400EZ	562.86
150	75	RC600EZ	926.35	AC600EZ	521.71	-	-

Price Group: SD
AL03



EZ Boss-Lock™ Dixon™ Type D

Female Coupler x Female Thread									
Size (mm)	Max WP* PSI	Stainless Steel BSP		Stainless Steel NPT		Aluminium NPT		Brass NPT	
		Part No.	Price \$	Part No.	Price \$	Part No.	Price \$	Part No.	Price \$
15	150	RD050EZA	200.09	RD050EZ	208.70	-	-	-	-
20	250	RD075EZA	146.28	RD075EZ	91.51	-	-	BD075EZ	92.30
25	250	RD100EZA	176.84	RD100EZ	128.08	AD100EZ	75.92	BD100EZ	116.77
32	250	RD125EZA	294.93	RD125EZ	218.29	-	-	BD125EZ	181.30
40	250	RD150EZA	248.00	RD150EZ	180.92	AD150EZ	102.10	BD150EZ	169.78
50	250	RD200EZA	283.59	RD200EZ	213.15	AD200EZ	114.16	BD200EZ	188.26
65	150	-	-	-	-	AD250EZ	143.30	BD250EZ	318.60
75	125	RD300EZA	289.03	RD300EZ	434.02	AD300EZ	134.20	BD300EZ	303.82
100	100	RD400EZA	398.92	RD400EZ	487.84	AD400EZ	157.94	BD400EZ	429.90
125	75	-	-	-	-	AD500EZ	489.24	-	-
150	75	-	-	RD600EZ	923.45	AD600EZ	463.93	-	-

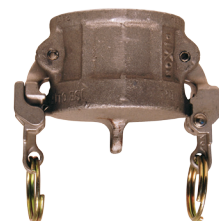
Price Group: SD
AL03



EZ Boss-Lock Dixon™ Type DC

Dust Cap						
Size (mm)	Stainless Steel		Aluminium		Brass	
	Part No.	Price \$	Part No.	Price \$	Part No.	Price \$
20	RH075EZ	186.75	-	-	-	-
25	RH100EZ	132.63	-	-	-	-
32	RH125EZ	215.70	-	-	-	-
40	RH150EZ	167.66	AH150EZ	119.50	-	-
50	RH200EZ	337.31	AH200EZ	110.89	BH200EZ	228.47
65	-	-	AH250EZ	150.97	-	-
75	RH300EZ	282.06	AH300EZ	123.59	-	-
100	RH400EZ	429.42	AH400EZ	207.95	-	-
150	RH600EZ	544.32	AH600EZ	380.08	-	-

Price Group: SD
AL03



Plated/Unplated malleable iron, hastelloy and aluminium hard coat are available on request

Note: 1/2" & 3/4" have same 3/4" body, only the thread changes.

- Under no circumstances should the EZ Boss-Lock™ cam arms be used on any fitting not specifically produced for their use.
- Dust Caps & Dust Plugs are **NOT** to be used in pressure applications for safety and environmental reasons.

For technical, application and material guidelines, please refer to page 82

