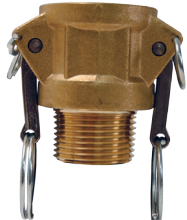


Standard BSP Dixon™ Type B

B



aluminum die cast



bronze sand cast



stainless steel



brass

Female Coupler x Male BSP

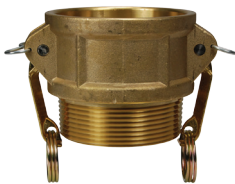
Size (mm)	Max WP PSI	Aluminium Die Cast		Bronze Sand Cast		Stainless Steel		Brass	
		Part No.	Price \$	Part No.	Price \$	Part No.	Price \$	Part No.	Price \$
15	150	ALDC050B	18.58	BR050B	17.85	SS050B	37.24	-	-
20	250	ALDC075B	15.30	BR075B	28.31	SS075B	38.26	BRSS075B	33.19
25	250	ALDC100B	15.91	BR100B	33.30	SS100B	42.19	BRSS100B	35.92
32	250	ALDC125B	21.52	BR125B	43.59	SS125B	64.56	BRSS125B	50.11
40	250	ALDC150B	20.25	BR150B	59.78	SS150B	63.71	BRSS150B	50.84
50	250	ALDC200B	20.74	BR200B	68.75	SS200B	81.51	BRSS200B	43.93
65	150	ALDC250B	33.23	BR250B	80.70	SS250B	120.08	BRSS250B	84.25
75	125	ALDC300B	34.25	BR300B	120.19	SS300B	147.66	BRSS300B	109.91
100	100	ALDC400B	56.95	BR400B	155.64	SS400B	213.25	BRSS400B	158.02
125	75	ALDC500B	89.61	BR500B	229.26	SS500B	511.77	-	-
150	75	ALDC600B	145.74	BR600B	421.85	SS600B	547.69	-	-

Price Group: CG
AL12Price Group: CG
AL06Price Group: CG
AL05Price Group: CG
AL14

Standard NPT Global Dixon™ Type B



aluminum



brass (forged)



316 stainless steel

Female Coupler x Male NPT Thread

Size (mm)	Aluminium (Brass Handles)		Brass (Forged)		316 Stainless Steel	
	Part No.	Price \$	Part No.	Price \$	Part No.	Price \$
13	G50-B-AL	34.24	G50-B-BR	47.64	G50-B-SS	71.19
20	G75-B-AL	12.60	G75-B-BR	49.79	G75-B-SS	68.86
25	G100-B-AL	41.02	G100-B-BR	53.88	G100-B-SS	103.55
32	G125-B-AL	46.49	G125-B-BR	75.16	G125-B-SS	146.74
40	G150-B-AL	36.52	G150-B-BR	76.25	G150-B-SS	156.38
50	G200-B-AL	44.80	G200-B-BR	85.12	G200-B-SS	163.02
65	G250-B-AL	71.78	G250-B-BR	131.64	G250-B-SS	241.19
75	G300-B-AL	25.72	G300-B-BR	171.74	G300-B-SS	219.38
100	G400-B-AL	102.47	G400-B-BR	246.90	G400-B-SS	369.63
125	G500-B-AL	184.56	G500-B-BR	552.95	-	-
150	G600-B-AL	241.71	-	-	G600-B-SS	1004.11

Price Group: CG
AL07Price Group: CG
AL14Price Group: CG
AL05