

TTMA Flange Spacer with 1/2" Port

Size (inch)	Description	Part No.	Price \$
4	flange spacer with 1/2 female NPT port	TTFS4AL-FP50	332.30

Price Group: BY
AS02

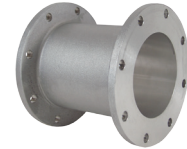


TTMA Flange Extensions

Application:	<ul style="list-style-type: none"> Used on load arms to connect an API load coupler to a load arm.
Features:	<ul style="list-style-type: none"> Adds a 6" space between the load arm and the tank truck. Extension with groove provides a specified parting point to prevent excessive damage to the loading arm.

Size (inch)	Description	Part No.	Price \$
4	TTMA flange extension	TETF4AL	166.68
4	TTMA flange extension with groove	TETFG4AL	184.00
4	TTMA flange extension with 1/2" female NPT port	TETF4ALFP50	320.20

Price Group: BY
AS02



TETF4AL



TETFG4AL

Cam & Groove Adaptor x TTMA Flange

Features:	<ul style="list-style-type: none"> Aluminum flanges have a flat face, stainless flanges have a raised face. 316 Stainless Steel flanges are produced as a welded fabrication. Reference dixonvalve.com for flange drilling standards. Pressure rating is based on the seal of the mating part, see ratings on page 82..
------------------	---

Size (inch)	Description	Part No.	Price \$
3	356T6 Aluminum	300-ALT-AL	210.44
3	316 Stainless Steel	300-ALT-SS	499.90
3 x 4	356T6 Aluminum	3040ALTAL	149.60
4	356T6 Aluminum	400-ALT-AL	152.57
4	316 Stainless Steel	400-ALT-SS	669.00
6	356T6 Aluminum	600-ALT-AL	323.20

Price Group: BY
AS02



Cam & Groove Coupler x TTMA Flange

Features:	<ul style="list-style-type: none"> Supplied standard with a Buna-N gasket, other gaskets available on pages 106-107. Use Dixon® replacement handles only
------------------	--

Size (inch)	Description	Part No.	Price \$
3	356T6 Aluminum	300-DLT-AL	190.20
3 x 4	356T6 Aluminum	3040DLTAL	248.60
4	356T6 Aluminum	400-DLT-AL	230.60
6	356T6 Aluminum	600-DLT-AL	556.80

Price Group: BY
AS02



Cam & Groove 22 1/2" Adaptor x TTMA Flange

Design:	<ul style="list-style-type: none"> Pressure rating is based on the seal of the mating part, see ratings on page 82.
----------------	--

Size (inch)	Description	Part No.	Price \$
4	356T6 Aluminum	40022ALTAL	306.54

Price Group: BY
AS02



Cam & Groove 22 1/2" Coupler x TTMA Flange

Design:	<ul style="list-style-type: none"> Supplied standard with a Buna-N gasket, other gaskets available on pages 106-107. Use Dixon® replacement handles only
----------------	--

Size (inch)	Description	Part No.	Price \$
4	356T6 Aluminum	40022DLTAL	317.20

Price Group: BY
AS02

